

Product datasheet

Recombinant *E. coli* PANK1 protein ab123146

1 Image

Description

Product name	Recombinant <i>E. coli</i> PANK1 protein	
Purity	> 95 % SDS-PAGE. ab123146 was purified using conventional chromatography.	
Expression system	Escherichia coli	
Accession	<u>P0A6I3</u>	
Protein length	Full length protein	
Animal free	No	
Nature	Recombinant	
Species	Escherichia coli	
Sequence	MGSSHHHHHHSSGLVPRGSHMGSHMSIKEQTLMTPYLQF DRNQWAALRDS VPMTLSEDEIARLKGINEDLSLEEVAEIMPLSRLNFISSN LRRQAVL EQFLGTNGQRIPYIISIAGSVAVGKSTTARVLQALLSRWPEH RRVELITT DGFLHPNQVLKERGLMKKKGFPEYDMHRLVKFVSDLKS GVPNVTAPVYS HLYDVIPDGDKTVVQPDILILEGLNVLQSGMDYPHDPHHV FVSDFVDFS IVDAPEDLLQTWYINRFLKFREGAFTDPDSYFHNYAKLTK EEAIKTAMT LWKEINWLNKQNLPTREASLI LTKSANHAVEEVRLRK	
Predicted molecular weight	39 kDa including tags	
Amino acids	1 to 316	
Tags	His tag N-Terminus	
Description	Recombinant <i>E. coli</i> PANK1 protein	

Specifications

Our **Abpromise guarantee** covers the use of **ab123146** in the following tested applications.

The application notes include recommended starting dilutions; optimal dilutions/concentrations should be determined by the end user.

Applications Mass Spectrometry

	SDS-PAGE
Mass spectrometry	MALDI-TOF
Form	Liquid

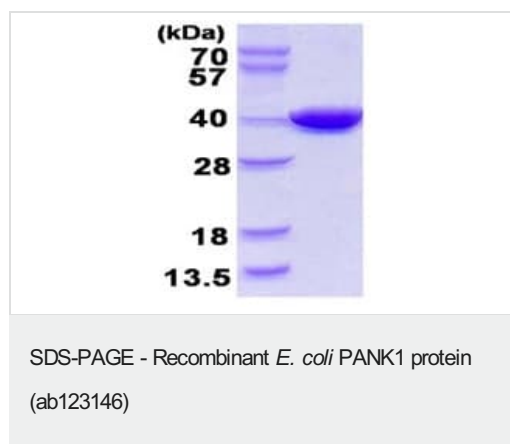
Preparation and Storage

Stability and Storage	Shipped at 4°C. Store at +4°C short term (1-2 weeks). Upon delivery aliquot. Store at -20°C or -80°C. Avoid freeze / thaw cycle. pH: 8.00 Constituents: 0.03% DTT, 0.32% Tris HCl, 10% Glycerol (glycerin, glycerine), 1.17% Sodium chloride
------------------------------	--

General Info

Function	Plays a role in the physiological regulation of the intracellular CoA concentration.
Tissue specificity	Isoform 1 is expressed at high levels in brain, heart, kidney, liver, skeletal muscle and testis. Isoform 2 is detected at much lower levels in kidney, liver, brain and testis and is not detected in heart or skeletal muscle.
Pathway	Cofactor biosynthesis; coenzyme A biosynthesis; CoA from (R)-pantothenate: step 1/5.
Sequence similarities	Belongs to the type II pantothenate kinase family.
Domain	The N-terminal extension, present in isoform 1 may be the regulatory domain.
Cellular localization	Cytoplasm.

Images



15% SDS PAGE, 3 µg of ab123146 loaded.

Please note: All products are "FOR RESEARCH USE ONLY. NOT FOR USE IN DIAGNOSTIC PROCEDURES"

Our Abpromise to you: Quality guaranteed and expert technical support

- Replacement or refund for products not performing as stated on the datasheet
- Valid for 12 months from date of delivery

- Response to your inquiry within 24 hours
- We provide support in Chinese, English, French, German, Japanese and Spanish
- Extensive multi-media technical resources to help you
- We investigate all quality concerns to ensure our products perform to the highest standards

If the product does not perform as described on this datasheet, we will offer a refund or replacement. For full details of the Abpromise, please visit <https://www.abcam.com/abpromise> or contact our technical team.

Terms and conditions

- Guarantee only valid for products bought direct from Abcam or one of our authorized distributors