

Product datasheet

Recombinant E. coli Thioredoxin reductase protein ab95910

[1 References](#) [1 Image](#)

Description

Product name	Recombinant E. coli Thioredoxin reductase protein
Biological activity	Specific activity is 4-5 units/ml, and was measured in a coupled assay with DTNB and NADPH. The amount of TNB generated by NADPH was measured in absorbance at 412 nm.
Purity	> 90 % SDS-PAGE. ab95910 is purified using conventional chromatography techniques.
Expression system	Escherichia coli
Accession	<u>P0A9P4</u>
Protein length	Full length protein
Animal free	No
Nature	Recombinant
Species	Escherichia coli
Sequence	MGTTKHSKLL ILGSGPAGYT AAVYAARANL QPVLITGMEK GGQLTTTTEV ENWPGDPNDL TGPLLMERMH EHATKFETEI IFDHINKVDL QNRPFRLNGD NGEYTCDALI IATGASARYL GLPSEEAFCRG RGVSAACATCD GFFYRNQKVA VIGGGNTAVE EALYLSNIAS EVHLIHRDGD FRAEKILIKR LMDKVENGNI ILHTNRTLEE VTGDQMGVTG VRLRDTQNSD NIESLDVAGL FVAIGHSPNT AIFEGQLELE NGYIKVQSGI HGNATQTSIP GVFAAGDVMD HIYRQAITS GTGCMALDA ERYLDGLADA K
Predicted molecular weight	35 kDa
Actual molecular weight	35 kDa
Amino acids	1 to 321
Description	Recombinant <i>E. coli</i> Thioredoxin reductase protein

Specifications

Our **Abpromise guarantee** covers the use of **ab95910** in the following tested applications.

The application notes include recommended starting dilutions; optimal dilutions/concentrations should be determined by the end user.

Applications Functional Studies

	SDS-PAGE
	Mass Spectrometry
Mass spectrometry	MALDI-TOF-TOF
Form	Liquid

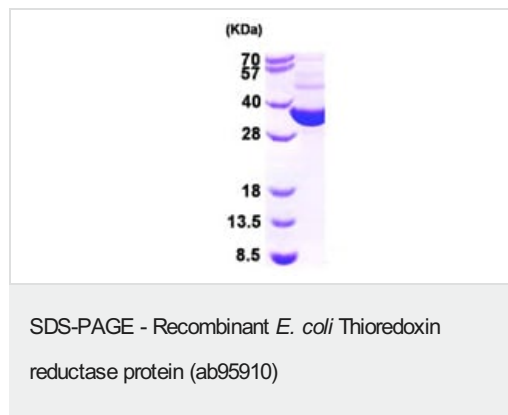
Preparation and Storage

Stability and Storage	<p>Shipped at 4°C. Store at +4°C short term (1-2 weeks). Upon delivery aliquot. Store at -20°C or -80°C. Avoid freeze / thaw cycle.</p> <p>pH: 8.00</p> <p>Constituents: 0.0154% DTT, 0.316% Tris HCl, 10% Glycerol (glycerin, glycerine)</p> <p>This product is an active protein and may elicit a biological response in vivo, handle with caution.</p>
------------------------------	---

General Info

Relevance	Thioredoxin reductase is a member of the flavin-containing NADPH:disulfide oxidoreductases (DSOR) family.
Cellular localization	Cytoplasmic

Images



15% SDS-PAGE showing ab95910 at approximately 34.6kDa (3µg).

Please note: All products are "FOR RESEARCH USE ONLY. NOT FOR USE IN DIAGNOSTIC PROCEDURES"

Our Abpromise to you: Quality guaranteed and expert technical support

- Replacement or refund for products not performing as stated on the datasheet
- Valid for 12 months from date of delivery
- Response to your inquiry within 24 hours
- We provide support in Chinese, English, French, German, Japanese and Spanish
- Extensive multi-media technical resources to help you
- We investigate all quality concerns to ensure our products perform to the highest standards

If the product does not perform as described on this datasheet, we will offer a refund or replacement. For full details of the Abpromise, please visit <https://www.abcam.com/abpromise> or contact our technical team.

Terms and conditions

- Guarantee only valid for products bought direct from Abcam or one of our authorized distributors