

Product datasheet

Recombinant HIV2 gp36 protein ab43035

1 Image

Description

Product name	Recombinant HIV2 gp36 protein
Purity	> 95 % SDS-PAGE. DEAE sepharose, Affinity purified.
Expression system	Escherichia coli
Protein length	Protein fragment
Animal free	No
Nature	Recombinant
Predicted molecular weight	25 kDa

Specifications

Our **Abpromise guarantee** covers the use of **ab43035** in the following tested applications.

The application notes include recommended starting dilutions; optimal dilutions/concentrations should be determined by the end user.

Applications	ELISA Western blot
Form	Liquid
Additional notes	Immunoreactive with sera of HIV-2 infected individuals.

Preparation and Storage

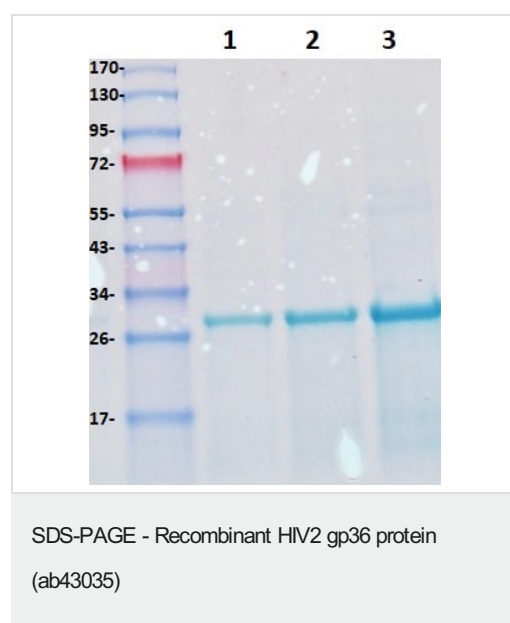
Stability and Storage	Shipped at 4°C. Upon delivery aliquot and store at -20°C. Avoid freeze / thaw cycles. pH: 9.00 Constituents: 48% Urea, 0.79% Tris HCl
------------------------------	---

General Info

Relevance	HIV2 infections at present, are predominantly found in west Africa where it is the dominant form of HIV. Both HIV1 and HIV2 have the same modes of transmission and are associated with similar opportunistic infections and AIDS. In persons infected with HIV2, immunodeficiency seems to develop more slowly and to be milder, but as the disease advances, HIV2 infectiousness seems
------------------	--

to increase. Little is known about the best approach to the clinical treatment and care of patients infected with HIV2. Some drugs used to treat HIV1 are ineffective. HIV1 and HIV2 have similar gag (viral core) and pol (polymerase) regions, they have relatively dissimilar env (envelope) regions. Owing to this lack of homology in the envelope region, there is little serologic cross-reactivity of the antibodies directed against the envelope antigens of both HIV1 and HIV2. The env gp36 ectodomain is highly conserved and elicits a type-specific antibody response. Hence, most licensed diagnostic assays incorporate gp36-derived antigens to detect HIV2 specific antibodies. It is becoming important to differentiate between single infection with either HIV1 or HIV2 and dual infection.

Images



ab43035 loaded onto 4-20% SDS-PAGE gel.

Purity of protein: >95%

Lane 1: 2µg ab43035

Lane 2: 4µg ab43035

Lane 3: 8µg ab43035

Please note: All products are "FOR RESEARCH USE ONLY. NOT FOR USE IN DIAGNOSTIC PROCEDURES"

Our Abpromise to you: Quality guaranteed and expert technical support

- Replacement or refund for products not performing as stated on the datasheet
- Valid for 12 months from date of delivery
- Response to your inquiry within 24 hours
- We provide support in Chinese, English, French, German, Japanese and Spanish
- Extensive multi-media technical resources to help you
- We investigate all quality concerns to ensure our products perform to the highest standards

If the product does not perform as described on this datasheet, we will offer a refund or replacement. For full details of the Abpromise, please visit <https://www.abcam.com/abpromise> or contact our technical team.

Terms and conditions

- Guarantee only valid for products bought direct from Abcam or one of our authorized distributors