

Product datasheet

Recombinant Human 14-3-3 Theta + Tau protein ab85270

[1 Image](#)

Description

Product name	Recombinant Human 14-3-3 Theta + Tau protein
Purity	> 95 % SDS-PAGE. Purity was determined to be >95% by densitometry.
Expression system	Escherichia coli
Accession	<u>P27348</u>
Protein length	Full length protein
Animal free	No
Nature	Recombinant
Species	Human

Specifications

Our **Abpromise guarantee** covers the use of **ab85270** in the following tested applications.

The application notes include recommended starting dilutions; optimal dilutions/concentrations should be determined by the end user.

Applications	SDS-PAGE Western blot
Form	Liquid

Preparation and Storage

Stability and Storage	Shipped on dry ice. Upon delivery aliquot and store at -80°C. Avoid freeze / thaw cycles. pH: 7.50 Constituents: 0.00174% PMSF, 0.00385% DTT, 0.79% Tris HCl, 25% Glycerol (glycerin, glycerine), 0.29% Sodium chloride
------------------------------	---

General Info

Function	Adapter protein implicated in the regulation of a large spectrum of both general and specialized signaling pathways. Binds to a large number of partners, usually by recognition of a
-----------------	---

phosphoserine or phosphothreonine motif. Binding generally results in the modulation of the activity of the binding partner.

Tissue specificity

Abundantly expressed in brain, heart and pancreas, and at lower levels in kidney and placenta. Up-regulated in the lumbar spinal cord from patients with sporadic amyotrophic lateral sclerosis (ALS) compared with controls, with highest levels of expression in individuals with predominant lower motor neuron involvement.

Sequence similarities

Belongs to the 14-3-3 family.

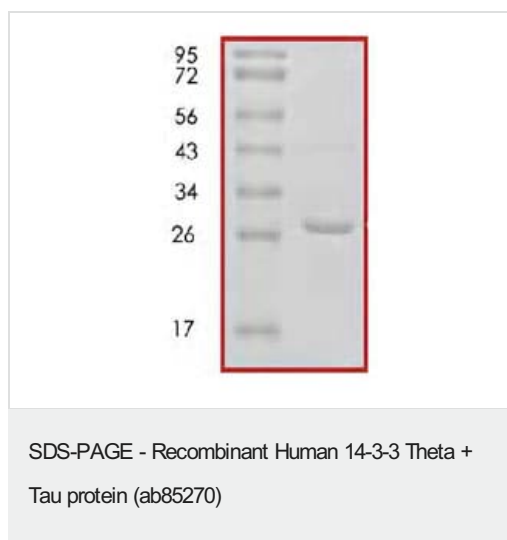
Post-translational modifications

Ser-232 is probably phosphorylated by CK1.

Cellular localization

Cytoplasm. In neurons, axonally transported to the nerve terminals.

Images



SDS-PAGE showing ab85270 at approximately 29kDa.

Please note: All products are "FOR RESEARCH USE ONLY. NOT FOR USE IN DIAGNOSTIC PROCEDURES"

Our Abpromise to you: Quality guaranteed and expert technical support

- Replacement or refund for products not performing as stated on the datasheet
- Valid for 12 months from date of delivery
- Response to your inquiry within 24 hours
- We provide support in Chinese, English, French, German, Japanese and Spanish
- Extensive multi-media technical resources to help you
- We investigate all quality concerns to ensure our products perform to the highest standards

If the product does not perform as described on this datasheet, we will offer a refund or replacement. For full details of the Abpromise, please visit <https://www.abcam.com/abpromise> or contact our technical team.

Terms and conditions

- Guarantee only valid for products bought direct from Abcam or one of our authorized distributors