

Recombinant Human Abhd5/CGI-58 protein ab132557

1 Image

| Description | |
|----------------------------|----------------------------------------------------------------------------------------------------------------------------------------------------------------------------------------------------------------------------------------------------------------------------------------------------------------------------------------------------------------------------------------------------------------|
| Product name | Recombinant Human Abhd5/CGI-58 protein |
| Expression system | Wheat germ |
| Accession | <u>Q8WTS1</u> |
| Protein length | Full length protein |
| Animal free | No |
| Nature | Recombinant |
| Species | Human |
| Sequence | MAAEEEEVDSADTGERSGWLTGWLPTWCPTSISHLKEA EEKMLKCVPCY KKEPVRIISNGNKIWLKFSHNISNKTPLVLLHGFGGGLGLW ALNFGDLCT NRPVYAFDLLGFGRSSRPRFSDAEEVENQFVESIEEWR CALGLDKMILL GHNLGGFLLAAAYSLKYPSRVNHLILVEPWGFPERPDADQ DRPIPWWIRA LGAALTPFNPLAGLRIAGPFGLSLVQRLRPDFKRKYSSMF EDDTVTEYY HCNVQTPSGETAFAKNMTIPYGWAKRPMLQRIGKMHPDIPV SVIFGARSCI DGNSGTSIQSLRPHSYVKTAILGAGHYVYADQPEEFNQKV KEICDTVD |
| Predicted molecular weight | 64 kDa including tags |
| Amino acids | 1 to 349 |
| Tags | GST tag N-Terminus |

Specifications

Our **Abpromise guarantee** covers the use of **ab132557** in the following tested applications.

The application notes include recommended starting dilutions; optimal dilutions/concentrations should be determined by the end user.

| | |
|--------------|--------------|
| Applications | ELISA |
| | SDS-PAGE |
| | Western blot |

| | |
|-------------------------|------------------------------------------------|
| Form | Liquid |
| Additional notes | This product was previously labelled as Abhd5. |

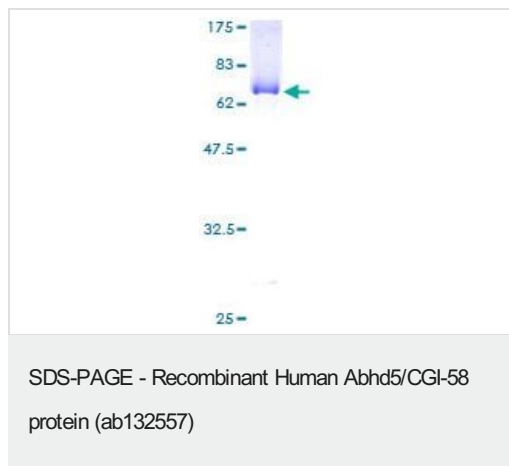
Preparation and Storage

| | |
|------------------------------|----------------------------------------------------------------------------------------------------------------------------------------------------------|
| Stability and Storage | Shipped on dry ice. Upon delivery aliquot and store at -80°C. Avoid freeze / thaw cycles. pH: 8.00 Constituents: 0.31% Glutathione, 0.79% Tris HCl |
|------------------------------|----------------------------------------------------------------------------------------------------------------------------------------------------------|

General Info

| | |
|-------------------------------|---------------------------------------------------------------------------------------------------------------------------------------------------------------------------------------------------------------------------------------------------------------------------------------------------------------------------------------------------------------------------------------------------------------------------------------------------------------------------------------------------------------------------------------------------------------------------------------------------------------------------------------------------------------------------------------------------------------------------------------------------|
| Function | Lysophosphatidic acid acyltransferase which functions in phosphatidic acid biosynthesis. May regulate the cellular storage of triacylglycerol through activation of the phospholipase PNPLA2. Involved in keratinocyte differentiation. |
| Tissue specificity | Widely expressed in various tissues, including lymphocytes, liver, skeletal muscle and brain. Expressed by upper epidermal layers and dermal fibroblasts in skin, hepatocytes and neurons (at protein level). |
| Involvement in disease | Defects in ABHD5 are the cause of Chananin-Dorfman syndrome (CDS) [MIM:275630]; also called triglyceride storage disease with impaired long-chain fatty acid oxidation or neutral lipid storage disease with ichthyosis. CDS is an autosomal recessive inborn error of lipid metabolism with multisystemic accumulation of triglycerides although plasma concentrations are normal. Clinical characteristics are congenital generalized ichthyosis, vacuolated leukocytes, hepatomegaly, myopathy, cataracts, neurosensory hearing loss and developmental delay. The disorder presents at birth with generalized, fine, white scaling of the skin and a variable degree of erythema resembling non-bullous congenital ichthyosiform erythroderma. |
| Sequence similarities | Belongs to the peptidase S33 family. ABHD4/ABHD5 subfamily. |
| Developmental stage | Detected in fetal epidermis from 49 to 135 days estimated gestational age (at protein level). |
| Domain | The HXXXXD motif is essential for acyltransferase activity and may constitute the binding site for the phosphate moiety of the glycerol-3-phosphate. |
| Cellular localization | Cytoplasm. Lipid droplet. Colocalized with PLIN and ADRP on the surface of lipid droplets. The localization is dependent upon the metabolic status of the adipocytes and the activity of PKA. |

Images



12.5% SDS-PAGE analysis of ab132557 stained with Coomassie Blue.

Please note: All products are "FOR RESEARCH USE ONLY. NOT FOR USE IN DIAGNOSTIC PROCEDURES"

Our Abpromise to you: Quality guaranteed and expert technical support

- Replacement or refund for products not performing as stated on the datasheet
- Valid for 12 months from date of delivery
- Response to your inquiry within 24 hours
- We provide support in Chinese, English, French, German, Japanese and Spanish
- Extensive multi-media technical resources to help you
- We investigate all quality concerns to ensure our products perform to the highest standards

If the product does not perform as described on this datasheet, we will offer a refund or replacement. For full details of the Abpromise, please visit <https://www.abcam.com/abpromise> or contact our technical team.

Terms and conditions

- Guarantee only valid for products bought direct from Abcam or one of our authorized distributors