

## Product datasheet

# Recombinant Human ACAT2/Acetyl-CoA acetyltransferase protein ab98082

1 Image

### Description

<b>Product name</b>	Recombinant Human ACAT2/Acetyl-CoA acetyltransferase protein
<b>Purity</b>	> 95 % SDS-PAGE. ab98082 was purified using conventional chromatography techniques.
<b>Expression system</b>	Escherichia coli
<b>Accession</b>	<u><b>Q9BWD1</b></u>
<b>Protein length</b>	Full length protein
<b>Animal free</b>	No
<b>Nature</b>	Recombinant
<b>Species</b>	Human
<b>Sequence</b>	<p><b>MRGSHHHHHH GMASMTGGQQ MGRDLYDDDD</b></p> <p><b>KDRWGS</b>MNAG SDPVVIVSAA RTIGSFNGA            LAAVPVQDLG STVIKEVLKR ATVAPEDVSE            VIFGHVLAAG CGQNPVRQAS VGAGIPYSVP            AWSCQMIGS GLKAVCLAVQ SIGIGDSSIV            VAGGMENMSK APLAYLRTG            VKIGEMPLTDSILCDGLTDA FHNCHMGITA            ENVAKKWQVS REDQDKVAVL SQNRTEAQQ            AGHFDKEIVP VLVSTRKGLI EVKTDEFPRH GSNIEAMSKL            KPYFLTDGTG TVTPANASGI NDGAAAVVLM            KKSEADKRGL TPLARVSWS QVGVEPSIMG IGPIPAIKQA            VTKAGWSLED VDIFEINEAF AAVSAANKE LGLNPEKVNI            EGGAIALGHP LGASGCRILV TLLHTLERMG RSRGVAALCI            GGGMGIAMCV QRE</p>
<b>Predicted molecular weight</b>	45 kDa including tags
<b>Amino acids</b>	1 to 397
<b>Tags</b>	His tag N-Terminus

### Specifications

Our **Abpromise guarantee** covers the use of **ab98082** in the following tested applications.

The application notes include recommended starting dilutions; optimal dilutions/concentrations should be determined by the end user.

<b>Applications</b>	SDS-PAGE
<b>Mass spectrometry</b>	MALDI-TOF
<b>Form</b>	Liquid
<b>Additional notes</b>	This product was previously labelled as ACAT2, Acetyl-CoA acetyltransferase

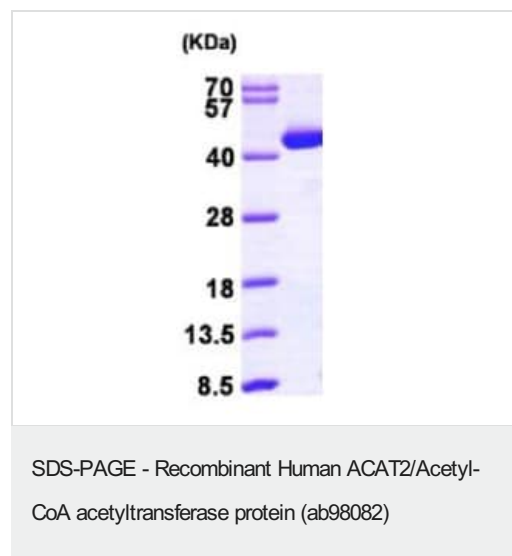
## Preparation and Storage

<b>Stability and Storage</b>	Shipped at 4°C. Store at +4°C short term (1-2 weeks). Upon delivery aliquot. Store at -20°C or -80°C. Avoid freeze / thaw cycle.  pH: 8.00 Constituents: 0.00154% DTT, 0.316% Tris HCl, 10% Glycerol (glycerin, glycerine), 0.58% Sodium chloride
------------------------------	--

## General Info

<b>Sequence similarities</b>	Belongs to the thiolase family.
<b>Cellular localization</b>	Cytoplasm.

## Images



15% SDS-PAGE analysis of ab98082 (3µg)

**Please note:** All products are "FOR RESEARCH USE ONLY. NOT FOR USE IN DIAGNOSTIC PROCEDURES"

## Our Abpromise to you: Quality guaranteed and expert technical support

- Replacement or refund for products not performing as stated on the datasheet
- Valid for 12 months from date of delivery
- Response to your inquiry within 24 hours

- We provide support in Chinese, English, French, German, Japanese and Spanish
- Extensive multi-media technical resources to help you
- We investigate all quality concerns to ensure our products perform to the highest standards

If the product does not perform as described on this datasheet, we will offer a refund or replacement. For full details of the Abpromise, please visit <https://www.abcam.com/abpromise> or contact our technical team.

#### **Terms and conditions**

---

- Guarantee only valid for products bought direct from Abcam or one of our authorized distributors