

Product datasheet

Recombinant Human ACSL1 protein ab116839

1 Image

Description	
Product name	Recombinant Human ACSL1 protein
Expression system	Wheat germ
Accession	<b><u>P33121</u></b>
Protein length	Protein fragment
Animal free	No
Nature	Recombinant
Species	Human
Sequence	PKPLKPPCDLSMQSVEVAGSGGARRSALLDSDEPLVYFY DDVTTLYEGFQ RGIQVSNNGPCLGSRKPDQPYEWLSYKQVAELSECIGSA LIQKGFKTA
Predicted molecular weight	36 kDa including tags
Amino acids	48 to 145

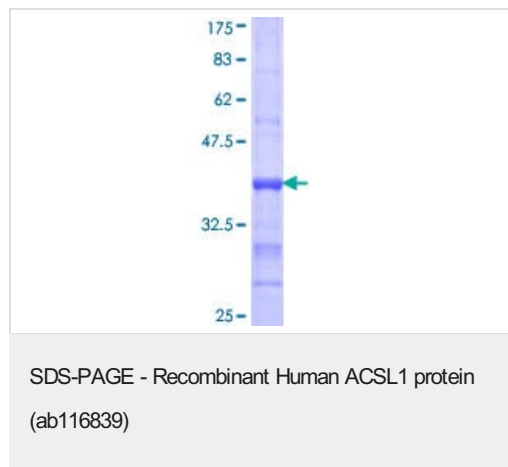
Specifications	
Our <b><u>Abpromise guarantee</u></b> covers the use of <b>ab116839</b> in the following tested applications.	
The application notes include recommended starting dilutions; optimal dilutions/concentrations should be determined by the end user.	
Applications	ELISA SDS-PAGE Western blot
Form	Liquid

Preparation and Storage	
Stability and Storage	Shipped on dry ice. Upon delivery aliquot and store at -80°C. Avoid freeze / thaw cycles. pH: 8.00 Constituents: 0.3% Glutathione, 0.79% Tris HCl

General Info	
--------------	--

<b>Function</b>	Activation of long-chain fatty acids for both synthesis of cellular lipids, and degradation via beta-oxidation. Preferentially uses palmitoleate, oleate and linoleate.
<b>Tissue specificity</b>	Highly expressed in liver, heart, skeletal muscle, kidney and erythroid cells, and to a lesser extent in brain, lung, placenta and pancreas.
<b>Sequence similarities</b>	Belongs to the ATP-dependent AMP-binding enzyme family.
<b>Developmental stage</b>	Expressed during the early stages of erythroid development while expression is very low in reticulocytes and young erythrocytes.
<b>Cellular localization</b>	Mitochondrion outer membrane. Peroxisome membrane. Microsome membrane. Endoplasmic reticulum membrane.

## Images



12.5% SDS-PAGE stained with Coomassie Blue showing ab116839 at approximately 36.41 kDa.

**Please note:** All products are "FOR RESEARCH USE ONLY. NOT FOR USE IN DIAGNOSTIC PROCEDURES"

## Our Abpromise to you: Quality guaranteed and expert technical support

- Replacement or refund for products not performing as stated on the datasheet
- Valid for 12 months from date of delivery
- Response to your inquiry within 24 hours
- We provide support in Chinese, English, French, German, Japanese and Spanish
- Extensive multi-media technical resources to help you
- We investigate all quality concerns to ensure our products perform to the highest standards

If the product does not perform as described on this datasheet, we will offer a refund or replacement. For full details of the Abpromise, please visit <https://www.abcam.com/abpromise> or contact our technical team.

## Terms and conditions

- Guarantee only valid for products bought direct from Abcam or one of our authorized distributors