

Product datasheet

Recombinant Human ADA2 beta protein ab164942

[1 Image](#)

Description

| | |
|--------------------------|---|
| Product name | Recombinant Human ADA2 beta protein |
| Expression system | Wheat germ |
| Accession | <u>Q86TJ2</u> |
| Protein length | Protein fragment |
| Animal free | No |
| Nature | Recombinant |
| Species | Human |
| Sequence | AELGKKYCVYCLAEVSPLRFRCTECQDIELCPECFSAGA EIGHHRRYHGY QLVDGGRFTLWGPEAEGGWTSREEQLLLDAIEQFGFN WEDMAAHVGASR TPQEVMEHY |
| Amino acids | 2 to 110 |
| Tags | GST tag N-Terminus |

Specifications

Our **Abpromise guarantee** covers the use of **ab164942** in the following tested applications.

The application notes include recommended starting dilutions; optimal dilutions/concentrations should be determined by the end user.

| | |
|---------------------|--------------|
| Applications | Western blot |
| | ELISA |

| | |
|-------------|--------|
| Form | Liquid |
|-------------|--------|

Additional notes

Preparation and Storage

| | |
|------------------------------|--|
| Stability and Storage | Shipped on dry ice. Upon delivery aliquot and store at -80°C. Avoid freeze / thaw cycles. pH: 8.00 Constituents: 0.31% Glutathione, 0.79% Tris HCl |
|------------------------------|--|

General Info

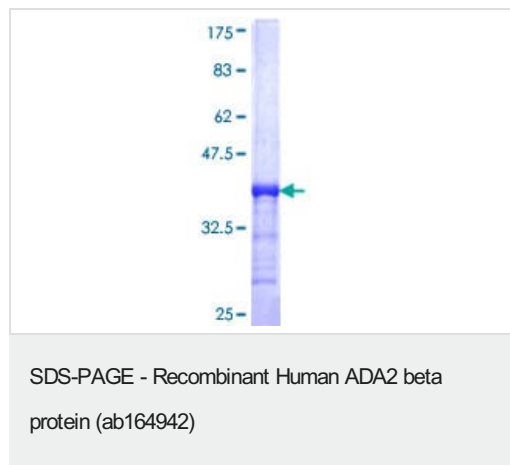
Relevance

ADA2 beta is a 48 kDA nuclear protein that functions as a transcriptional adaptor protein that affects transcription by altering histone acetyltransferase activity and linking activation factors to basal transcriptional machinery. It coactivates PAX5 dependent transcription together with either GCN5L2 or SMARCA4.

Cellular localization

Nuclear

Images



ab164942 on a 12.5% SDS-PAGE stained with Coomassie Blue.

Please note: All products are "FOR RESEARCH USE ONLY. NOT FOR USE IN DIAGNOSTIC PROCEDURES"

Our Abpromise to you: Quality guaranteed and expert technical support

- Replacement or refund for products not performing as stated on the datasheet
- Valid for 12 months from date of delivery
- Response to your inquiry within 24 hours
- We provide support in Chinese, English, French, German, Japanese and Spanish
- Extensive multi-media technical resources to help you
- We investigate all quality concerns to ensure our products perform to the highest standards

If the product does not perform as described on this datasheet, we will offer a refund or replacement. For full details of the Abpromise, please visit <https://www.abcam.com/abpromise> or contact our technical team.

Terms and conditions

- Guarantee only valid for products bought direct from Abcam or one of our authorized distributors