

## Product datasheet

# Recombinant Human ALOX12B protein ab157877

1 Image

### Description

---

<b>Product name</b>	Recombinant Human ALOX12B protein
<b>Expression system</b>	Wheat germ
<b>Protein length</b>	Full length protein
<b>Animal free</b>	No
<b>Nature</b>	Recombinant
<b>Species</b>	Human

### Sequence

MATYKVRVATGTDLLSGTRDSISLTVGTQGESHKQLLNHF  
GRDFATGAV  
GQYTVQCPQDLGELIIIRLHKERYAFFPKDPWYCNYVQICA  
PNGRIYHFP  
AYQWMDGYETLALREATGKTTADDSLPVLEHRKEEIRAK  
QDFYHWRVFL  
PGLPSYVHIPSYPVRRHRNPNRPEWNGYIPGFPILINFKA  
TKFLNLNL  
RYSFLKTASFFVRLGPMALAFKVRGLLDCKHWSKRLKDIR  
KIFPGKKSVM  
SEYVAEHWAEDTFYGYQLNGVNPGLIRRCTRIPDKFPVT  
DDMVAPFLGE  
GTCLQAELEKGNMLADYRIMEGIPTVELSGRKQHHCAPLC  
LLHFGPEGK  
MMPAIAQLSQTPGPDCEIFLPSDSEWDWLLAKTWVRYAEF  
YSHEAIAHLL  
ETHLIAEAFCLALLRNLPMCHPLYKLLIPHTRYTVQINSIGRA  
VLLNEGG  
LSAKGMSLGVEGFAGVMVRALSELTYDSLPLPNDFVERG  
VQDLPGYYRD  
DSLAVWNALEKYVTEIITYYPSDAAVEGDPELQSWVQEIF  
KECLLGRES  
SGFPRCLRTVPELIRYVTIVYTCSAKHAAVNTGQMEFTAW  
MPNFPASMR  
NPPIQTKGLTTLETTFMDTLPDVKTTCTLLVLWTLRSREPDD  
RRPLGHFPD  
IHFVEEAPRRSIEAFRQRLNQISHDIRQRNKCLPIPYYYLDPV  
LIENSIS I

<b>Amino acids</b>	1 to 701
<b>Tags</b>	GST tag N-Terminus

## Specifications

---

Our **Abpromise guarantee** covers the use of **ab157877** in the following tested applications.

The application notes include recommended starting dilutions; optimal dilutions/concentrations should be determined by the end user.

<b>Applications</b>	ELISA Western blot
<b>Form</b>	Liquid

## Additional notes

## Preparation and Storage

---

<b>Stability and Storage</b>	Shipped on dry ice. Upon delivery aliquot and store at -80°C. Avoid freeze / thaw cycles. pH: 8.00 Constituents: 0.31% Glutathione, 0.79% Tris HCl
------------------------------	--

## General Info

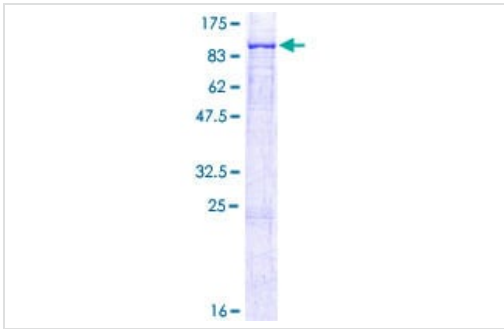
---

<b>Function</b>	Converts arachidonic acid to 12R-hydroperoxyeicosatetraenoic acid (12R-HPETE).
<b>Tissue specificity</b>	Expressed in B-cells, hair follicles, foreskin keratinocytes and adult skin. Also expressed in psoriatic tissue.
<b>Pathway</b>	Lipid metabolism; leukotriene D4 biosynthesis.
<b>Involvement in disease</b>	Defects in ALOX12B are a cause of non-bullous congenital ichthyosiform erythroderma (NCIE) [MIM:242100]. NCIE is a non-bullous ichthyosis, a skin disorder characterized by abnormal cornification of the epidermis. Most affected individuals are born with a tight, shiny, translucent covering called collodion membrane. The collodion membrane subsequently evolves into generalized scaling and intense redness of the skin. Clinical features are milder than in lamellar ichthyoses and demonstrate a greater variability in the intensity of erythema, size and type of scales. In contrast to lamellar ichthyoses, scales are usually white, fine and powdery, and palms and soles are severely affected. Patients suffer from palmoplantar keratoderma, often with painful fissures, digital contractures, and loss of pulp volume.
<b>Sequence similarities</b>	Belongs to the lipoxygenase family. Contains 1 lipoxygenase domain. Contains 1 PLAT domain.

---

## Images

---



SDS-PAGE - Recombinant Human ALOX12B protein  
(ab157877)

ab157877 on a 12.5% SDS-PAGE stained with Coomassie Blue.

**Please note:** All products are "FOR RESEARCH USE ONLY. NOT FOR USE IN DIAGNOSTIC PROCEDURES"

### Our Abpromise to you: Quality guaranteed and expert technical support

---

- Replacement or refund for products not performing as stated on the datasheet
- Valid for 12 months from date of delivery
- Response to your inquiry within 24 hours
  
- We provide support in Chinese, English, French, German, Japanese and Spanish
- Extensive multi-media technical resources to help you
- We investigate all quality concerns to ensure our products perform to the highest standards

If the product does not perform as described on this datasheet, we will offer a refund or replacement. For full details of the Abpromise, please visit <https://www.abcam.com/abpromise> or contact our technical team.

### Terms and conditions

---

- Guarantee only valid for products bought direct from Abcam or one of our authorized distributors