

Recombinant Human alpha 1 Fetoprotein ab207113

1 Image

Description

Product name	Recombinant Human alpha 1 Fetoprotein
Purity	> 95 % SDS-PAGE. Affinity purified
Endotoxin level	< 1.000 Eu/µg
Expression system	Insect cells
Accession	<b><u>P02771</u></b>
Protein length	Full length protein
Animal free	No
Nature	Recombinant
Species	Human
Sequence	

RTLHRNEYGIASILDSYQCTAEISLADLATIFFAQFVQEATYK  
EVSKMVK  
DALTAIEKPTGDEQSSGCLENQLPAFLEELCHEKEILEKYG  
HSDCCSQSE  
EGRHNCFLAHKKPTPASIFLQVPEPVTSC EAYEEDRETF  
MNKFYEIAR  
RHPFLYAPTILLWAARYDKIIPSCCKAENAVECFQTKAATV  
TKELRESSL  
LNQHACAVMKNFGTRTFQAITVTKLSQKFTKVNFTIQKLV  
LDVAHVHEH  
CCRGDVLDCLDGEEKIMSYICSQQDTLSNKITECCKLTTLE  
RGQCIIHAE  
NDEKPEGLSPNLNRFLGDRDFNQFSSGEKNIFLASFVHEY  
SRRHPQLAVS  
VILRVAKGYQELLEKCFQTENPLECQDKGEEELQKYQES  
QALAKRSCGL  
FQKLGEYYLQNAFLVAYTKKAPQLTSSELMAITRKMAATAA  
TCCQLSEDK  
LLACGEGAADIIIGHLCIRHEMTPVNPVGVGQCCTSSYANRR  
PCFSSLVVD  
ETYVPPAFSDDKFIHFDLCQAQGV ALQTMKQEFLINLVK  
QKPQITEEQL  
EAVIADFSGLLEKCCQGQEQEVCFAEEGQKLISKTRAALG  
VHHHHHH

<b>Predicted molecular weight</b>	67 kDa including tags
<b>Amino acids</b>	19 to 609
<b>Tags</b>	His tag C-Terminus
<b>Additional sequence information</b>	This product is for the mature full length protein. The signal peptide is not included. NP_001125.

## Specifications

---

Our **Abpromise guarantee** covers the use of **ab207113** in the following tested applications.

The application notes include recommended starting dilutions; optimal dilutions/concentrations should be determined by the end user.

<b>Applications</b>	SDS-PAGE
<b>Form</b>	Liquid

## Preparation and Storage

---

<b>Stability and Storage</b>	Shipped at 4°C. Store at +4°C short term (1-2 weeks). Upon delivery aliquot. Store at -20°C or -80°C. Avoid freeze / thaw cycle.  pH: 7.40 Constituents: 10% Glycerol (glycerin, glycerine), 90% PBS
------------------------------	---

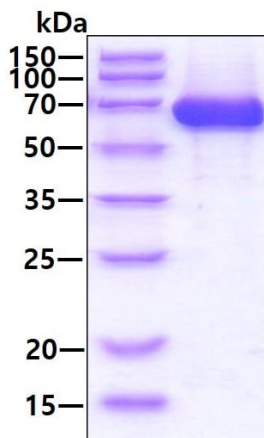
## General Info

---

<b>Function</b>	Binds copper, nickel, and fatty acids as well as, and bilirubin less well than, serum albumin. Only a small percentage (less than 2%) of the human AFP shows estrogen-binding properties.
<b>Tissue specificity</b>	Plasma. Synthesized by the fetal liver and yolk sac.
<b>Sequence similarities</b>	Belongs to the ALB/AFP/VDB family. Contains 3 albumin domains.
<b>Developmental stage</b>	Occurs in the plasma of fetuses more than 4 weeks old, reaches the highest levels during the 12th-16th week of gestation, and drops to trace amounts after birth. The serum level in adults is usually less than 40 ng/ml. AFP occurs also at high levels in the plasma and ascitic fluid of adults with hepatoma.
<b>Post-translational modifications</b>	Independent studies suggest heterogeneity of the N-terminal sequence of the mature protein and of the cleavage site of the signal sequence. Sulfated.
<b>Cellular localization</b>	Secreted.

## Images

---



SDS-PAGE - Recombinant Human alpha 1  
Fetoprotein (ab207113)

SDS-PAGE analysis of ab207113 (3 $\mu$ g) under reducing condition and visualized by coomassie blue stain.

**Please note:** All products are "FOR RESEARCH USE ONLY. NOT FOR USE IN DIAGNOSTIC PROCEDURES"

#### Our Abpromise to you: Quality guaranteed and expert technical support

---

- Replacement or refund for products not performing as stated on the datasheet
- Valid for 12 months from date of delivery
- Response to your inquiry within 24 hours
- We provide support in Chinese, English, French, German, Japanese and Spanish
- Extensive multi-media technical resources to help you
- We investigate all quality concerns to ensure our products perform to the highest standards

If the product does not perform as described on this datasheet, we will offer a refund or replacement. For full details of the Abpromise, please visit <https://www.abcam.com/abpromise> or contact our technical team.

#### Terms and conditions

---

- Guarantee only valid for products bought direct from Abcam or one of our authorized distributors