

# Recombinant Human Alpha 2 Antiplasmin protein

## ab152615

1 Image

Description	
Product name	Recombinant Human Alpha 2 Antiplasmin protein
Expression system	Wheat germ
Protein length	Full length protein
Animal free	No
Nature	Recombinant
Species	Human
Sequence	MVLLWGLLVLSWSCLGPCSVFSPVSAMEPLGRQLTSG PNQEQVSPLTLL KLGNQEPGGQTALKSPPGVCSRDPTEQTHRLARAMMA FTADLFSLVAQT STCPNLILSPLSVALALSHLALGAQNHTLQRLQQVLHAGS GPCLPHLLSR LCQDLGPGAFRLAARMYLQKGFPIKEDFLEQSEQLFGAK PVSLTGKQEDD LANINQWVKEATEGKIQEFLSGLPEDTVLLLLNAHFQGGFW RNKFDPSTL QRDSFHLDEQFTVPVEMMQARTYPLRWFLLEQPEIQVAH FPFKNNMSFVV LVPTHFEWNVSQVLANLSWDTLHPPLVWERPTKVRLPKL YLKHQMDLVAT LSQLGLQELFQAPDLRGISEQSLVVSGVQHQSTLELSEVG VEAAAATSI MSRMSLSSFSVNRPFLLFFIFEDTTGLPLFVGSVRNPNSA PRELKEQQDS PGNKDFLQSLKGFPRGDKLFGPDLKLVPPEEDYPQFG SPK
Predicted molecular weight	81 kDa including tags

### Specifications

Our **Abpromise guarantee** covers the use of **ab152615** in the following tested applications.

The application notes include recommended starting dilutions; optimal dilutions/concentrations should be determined by the end user.

<b>Applications</b>	SDS-PAGE
	Western blot
	ELISA
<b>Form</b>	Liquid
<b>Additional notes</b>	

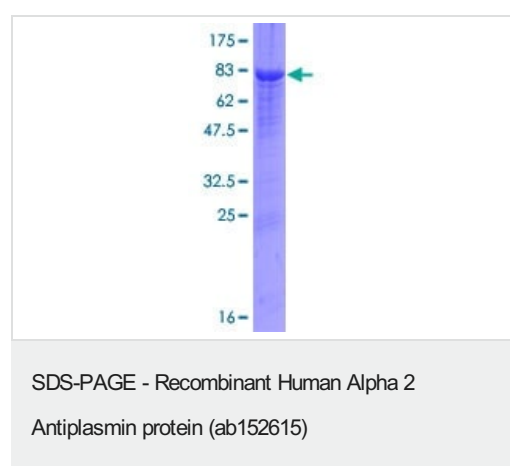
## Preparation and Storage

<b>Stability and Storage</b>	Shipped on dry ice. Upon delivery aliquot and store at -80°C. Avoid freeze / thaw cycles. pH: 8.00 Constituents: 0.31% Glutathione, 0.79% Tris HCl
------------------------------	--

## General Info

<b>Function</b>	Serine protease inhibitor. The major targets of this inhibitor are plasmin and trypsin, but it also inactivates matriptase-3/TMPRSS7 and chymotrypsin.
<b>Tissue specificity</b>	Expressed by the liver and secreted in plasma.
<b>Involvement in disease</b>	Defects in SERPINF2 are the cause of alpha-2-plasmin inhibitor deficiency (APLID) [MIM:262850]. APLID is an autosomal recessive disorder resulting in severe hemorrhagic diathesis.
<b>Sequence similarities</b>	Belongs to the serpin family.
<b>Cellular localization</b>	Secreted.

## Images



12.5% SDS-PAGE analysis of ab152615 stained with Coomassie Blue.

**Please note:** All products are "FOR RESEARCH USE ONLY. NOT FOR USE IN DIAGNOSTIC PROCEDURES"

**Our Abpromise to you: Quality guaranteed and expert technical support**

- Replacement or refund for products not performing as stated on the datasheet
- Valid for 12 months from date of delivery
- Response to your inquiry within 24 hours
- We provide support in Chinese, English, French, German, Japanese and Spanish
- Extensive multi-media technical resources to help you
- We investigate all quality concerns to ensure our products perform to the highest standards

If the product does not perform as described on this datasheet, we will offer a refund or replacement. For full details of the Abpromise, please visit <https://www.abcam.com/abpromise> or contact our technical team.

#### **Terms and conditions**

---

- Guarantee only valid for products bought direct from Abcam or one of our authorized distributors