

Recombinant human Amphiregulin protein ab104355

[1 References](#) [1 Image](#)

Description

Product name	Recombinant human Amphiregulin protein
Biological activity	Determined by its ability to stimulate the proliferation of mouse Balb/c 3T3 cells. The expected ED ₅₀ for this effect is 5-10 ng/ml.
Purity	> 95 % SDS-PAGE. Purity is > 95% by SDS-PAGE gel and HPLC analyses. Sterile filtered through a 0.2 micron filter.
Endotoxin level	< 0.100 Eu/μg
Expression system	Escherichia coli
Accession	<u>P15514</u>
Protein length	Full length protein
Animal free	No
Nature	Recombinant
Species	Human
Sequence	SVRVEQVVKPPQNKTESENTSDKPKRKKKGGKNGKNRR NRKKKNPCNAEF QNFCIHGECKYIEHLEAVTCKCQQEYFGERCGEKSMKTHS MIDSSLSK
Predicted molecular weight	11 kDa
Amino acids	101 to 198

Specifications

Our **Abpromise guarantee** covers the use of **ab104355** in the following tested applications.

The application notes include recommended starting dilutions; optimal dilutions/concentrations should be determined by the end user.

Applications	SDS-PAGE Functional Studies Western blot
Form	Lyophilized
Additional notes	Reconstitute in water to a concentration of 0.1-1.0 mg/ml. Do not vortex. This solution can be stored at 2-8°C for up to 1 week. For extended storage, it is recommended to further dilute in a buffer containing a carrier protein (example 0.1% BSA) and store in working aliquots at -20°C to -

80°C.

Preparation and Storage

Stability and Storage

Shipped at 4°C. The lyophilized protein is stable for a few weeks at room temperature. Store at -20°C or -80°C. Avoid freeze / thaw cycle. Please see notes section.

Constituent: 0.082% Sodium phosphate

This product is an active protein and may elicit a biological response in vivo, handle with caution.

Reconstitution

Reconstitute in water to a concentration of 0.1-1.0 mg/ml. Do not vortex. This solution can be stored at 2-8°C for up to 1 week. For extended storage, it is recommended to further dilute in a buffer containing a carrier protein (example 0.1% BSA) and store in working aliquots at -20°C to -80°C.

General Info

Function

Bifunctional growth-modulating glycoprotein. Inhibits growth of several human carcinoma cells in culture and stimulates proliferation of human fibroblasts and certain other tumor cells.

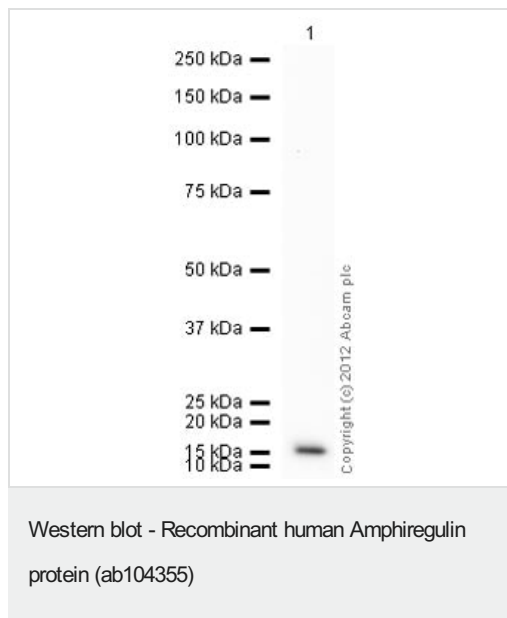
Sequence similarities

Belongs to the amphiregulin family.
Contains 1 EGF-like domain.

Cellular localization

Membrane.

Images



Anti-Amphiregulin antibody [MM0089-8K16] ([ab89119](#)) at 1/500 dilution + Recombinant human Amphiregulin protein (ab104355) at 0.1 µg

Secondary

Goat Anti-Mouse IgG H&L (HRP) preadsorbed ([ab97040](#)) at 1/5000 dilution

Developed using the ECL technique.

Performed under reducing conditions.

Exposure time: 8 minutes

[ab89119](#) recognizes the recombinant full length soluble Human Amphiregulin protein (ab104355) which has an expected molecular weight of ~12 kDa.

Please note: All products are "FOR RESEARCH USE ONLY. NOT FOR USE IN DIAGNOSTIC PROCEDURES"

Our Abpromise to you: Quality guaranteed and expert technical support

- Replacement or refund for products not performing as stated on the datasheet
- Valid for 12 months from date of delivery
- Response to your inquiry within 24 hours

- We provide support in Chinese, English, French, German, Japanese and Spanish
- Extensive multi-media technical resources to help you
- We investigate all quality concerns to ensure our products perform to the highest standards

If the product does not perform as described on this datasheet, we will offer a refund or replacement. For full details of the Abpromise, please visit <https://www.abcam.com/abpromise> or contact our technical team.

Terms and conditions

- Guarantee only valid for products bought direct from Abcam or one of our authorized distributors