

Product datasheet

Recombinant human Amphiregulin protein (Animal Free) ab229598

[2 Images](#)

Description

Product name	Recombinant human Amphiregulin protein (Animal Free)
Biological activity	3T3 Cell Proliferation. ED ₅₀ ≤ 20 ng/ml (≥ 5.0 x 10 ⁴ units/mg).
Purity	≥ 95 % SDS-PAGE. Purity determined by reducing and non-reducing SDS-PAGE.
Endotoxin level	≤ 1.000 Eu/μg
Expression system	Escherichia coli
Accession	<u>P15514</u>
Protein length	Full length protein
Animal free	Yes
Nature	Recombinant
Species	Human
Sequence	SVRVEQVVKPPQNKTESENTSDKPKRKKKGGKNGKNRR NRKKKNPCNAEF QNFCIHGECKYIEHLEAVTCKCQQEYFGERCGEKSMK
Predicted molecular weight	10 kDa
Amino acids	101 to 187
Additional sequence information	This product is the mature full length protein from aa 101 to 187. The signal peptide and propeptide are not included.

Specifications

Our **Abpromise guarantee** covers the use of **ab229598** in the following tested applications.

The application notes include recommended starting dilutions; optimal dilutions/concentrations should be determined by the end user.

Applications	Functional Studies SDS-PAGE
Form	Lyophilized

Preparation and Storage

Stability and Storage

Shipped at 4°C. Store at -20°C. Avoid freeze / thaw cycle.

Constituent: 0.16% Sodium phosphate

Lyophilized from a sterile (0.2 micron) filtered aqueous solution.

This product is an active protein and may elicit a biological response in vivo, handle with caution.

Reconstitution

Reconstitute with sterile water at 0.1 mg/ml. Centrifuge vial before opening. Suspend the product by gently pipetting the above recommended solution down the sides of the vial. DO NOT VORTEX. Allow several minutes for complete reconstitution. For prolonged storage, dilute to working aliquots in a 0.1% BSA solution, store at -80°C and avoid repeat freeze thaws.

General Info

Function

Bifunctional growth-modulating glycoprotein. Inhibits growth of several human carcinoma cells in culture and stimulates proliferation of human fibroblasts and certain other tumor cells.

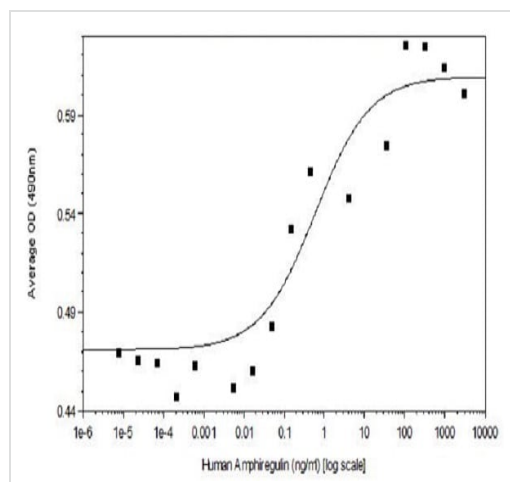
Sequence similarities

Belongs to the amphiregulin family.
Contains 1 EGF-like domain.

Cellular localization

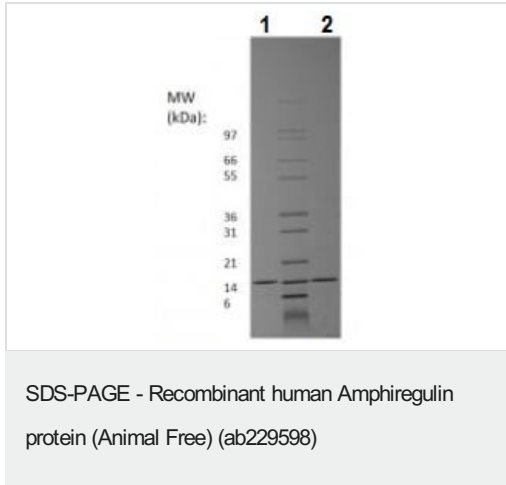
Membrane.

Images



ab229598 induced proliferation of 3T3 cells.

Functional Studies - Recombinant human
Amphiregulin protein (Animal Free) (ab229598)



1 µg ab229598 analyzed on a 4-20% Tris-Glycine gel, stained with Coomassie Blue.

Lane 1: Non-reducing conditions.

Lane 2: Reducing conditions.

Please note: All products are "FOR RESEARCH USE ONLY. NOT FOR USE IN DIAGNOSTIC PROCEDURES"

Our Abpromise to you: Quality guaranteed and expert technical support

- Replacement or refund for products not performing as stated on the datasheet
- Valid for 12 months from date of delivery
- Response to your inquiry within 24 hours
- We provide support in Chinese, English, French, German, Japanese and Spanish
- Extensive multi-media technical resources to help you
- We investigate all quality concerns to ensure our products perform to the highest standards

If the product does not perform as described on this datasheet, we will offer a refund or replacement. For full details of the Abpromise, please visit <https://www.abcam.com/abpromise> or contact our technical team.

Terms and conditions

- Guarantee only valid for products bought direct from Abcam or one of our authorized distributors