

## Product datasheet

# Recombinant Human Anterior Gradient 2 protein ab64013

[2 References](#) [1 Image](#)

### Description

<b>Product name</b>	Recombinant Human Anterior Gradient 2 protein
<b>Purity</b>	> 90 % SDS-PAGE.
<b>Expression system</b>	Escherichia coli
<b>Accession</b>	<b><u>O95994</u></b>
<b>Protein length</b>	Full length protein
<b>Animal free</b>	No
<b>Nature</b>	Recombinant
<b>Species</b>	Human
<b>Sequence</b>	<b>MRGSHHHHHH GMASMTGGQQ MGRDLYDDDD</b> <b>KDRWGSM</b> RDT TVKPGAKKDT KDSRPKLPQT LSRGWGDQLI WTQTYEEALY KSKTSNKPLM IIHHLDECPH SQALKKVFAE NKEIQKLAEQ FVLLNLVYET TDKHLSPDGQ YVPRIMFVDP SLTVRADITG RYSNRLYAYE PADTALLLDN MKKALKLLKT EL
<b>Predicted molecular weight</b>	22 kDa
<b>Amino acids</b>	21 to 175
<b>Tags</b>	His tag N-Terminus

### Specifications

Our **Abpromise guarantee** covers the use of **ab64013** in the following tested applications.

The application notes include recommended starting dilutions; optimal dilutions/concentrations should be determined by the end user.

<b>Applications</b>	SDS-PAGE
<b>Form</b>	Liquid

### Preparation and Storage

<b>Stability and Storage</b>	Shipped at 4°C. Store at +4°C short term (1-2 weeks). Upon delivery aliquot. Store at -20°C or -80°C. Avoid freeze / thaw cycle.
------------------------------	--

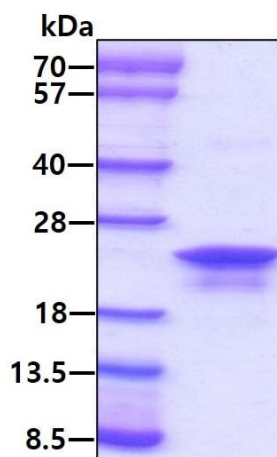
pH: 8.00

Constituents: 10% Glycerol (glycerin, glycerine), 0.03% EDTA, 0.32% Tris HCl

## General Info

<b>Function</b>	Required for MUC2 post-transcriptional synthesis and secretion. May play a role in the production of mucus by intestinal cells (By similarity). Proto-oncogene that may play a role in cell migration, cell differentiation and cell growth.
<b>Tissue specificity</b>	Expressed strongly in trachea, lung, stomach, colon, prostate and small intestine. Expressed weakly in pituitary gland, salivary gland, mammary gland, bladder, appendix, ovary, fetal lung, uterus, pancreas, kidney, fetal kidney, testis, placenta, thyroid gland and in estrogen receptor (ER)-positive breast cancer cell lines.
<b>Sequence similarities</b>	Belongs to the AGR family.
<b>Cellular localization</b>	Secreted. Endoplasmic reticulum.

## Images



SDS-PAGE analysis of ab64013 (3µg) under reducing condition and visualized by coomassie blue stain.

SDS-PAGE - Recombinant Human Anterior Gradient 2 protein (ab64013)

**Please note:** All products are "FOR RESEARCH USE ONLY. NOT FOR USE IN DIAGNOSTIC PROCEDURES"

## Our Abpromise to you: Quality guaranteed and expert technical support

- Replacement or refund for products not performing as stated on the datasheet
- Valid for 12 months from date of delivery
- Response to your inquiry within 24 hours
- We provide support in Chinese, English, French, German, Japanese and Spanish
- Extensive multi-media technical resources to help you
- We investigate all quality concerns to ensure our products perform to the highest standards

If the product does not perform as described on this datasheet, we will offer a refund or replacement. For full details of the Abpromise, please visit <https://www.abcam.com/abpromise> or contact our technical team.

#### **Terms and conditions**

---

- Guarantee only valid for products bought direct from Abcam or one of our authorized distributors