

Recombinant Human ARHGEF6 protein ab160497

1 Image

Description

Product name	Recombinant Human ARHGEF6 protein
Expression system	Wheat germ
Protein length	Full length protein
Animal free	No
Nature	Recombinant
Species	Human
Sequence	

MNPEEQMTWLISLGVLESPKKTICDPEEFLKSSSLKNGVVL
CKLINRLMP
GSVEKFCLDPQTEADCINNINDFLKGCATLQVEIFDPDDL
YSGVNFSKVL
STLLAVNKATEDQLSERPCGRSSSLSAANTSQTNPQGAV
SSTVSGLQRQS
KTVENTENGSHQLIVKARFNFKQTNEDELSVCKGDIYVTR
VEEGGWEG
TLNGRTGWFPSNYVREIKSSERPLSPKAVKGFETAPLTKN
YYTVVLQNIL
DTEKEYAKELQSLLVTYLRPLQSNNNLSTVEVTSLLGNFE
EVCTFQQTLC
QALEECSKFPENQHKVGGCLLSLMPHFKSMYLAYCANHP
SAVNVLTQHSD
ELEQFMENQGASSPGILITTNLSKPFMRLEKYVTLQLELE
RHMEDTHPD
HQDILKAVAFKTLMGQCQDLRKRKQLELQILSEPIQAWEG
EDIKNLGNV
IFMSQVMVQYGACEEKEERYLMLFSNVLIMLSASPRMSGF
YQGKPIAG
TVVTRLDEIEGNDCTFEITGNTVERIVHCNNNQDFQEWLE
QLNRLIRGP
ASCSSLSKTSSSSCSAHSSFSSTGQPRGPLEPPQIIKPWS
LSCLRPAPPL
RPSAALGYKERMSYILKESSKSPKTMKKFLHKRKTERKPS
EEEYVIRKST
AALEEDAQILKVIEAYCTSANFQQGHGSSTRKDSIPQVLLP
EEEKLIIEE
TRSNQGTIMEEKS LVDTVYALKDEVRELKQENKRMKQCL

Amino acids	1 to 776
Tags	GST tag N-Terminus

Specifications

Our **Abpromise guarantee** covers the use of **ab160497** in the following tested applications.

The application notes include recommended starting dilutions; optimal dilutions/concentrations should be determined by the end user.

Applications	ELISA Western blot
Form	Liquid
Additional notes	

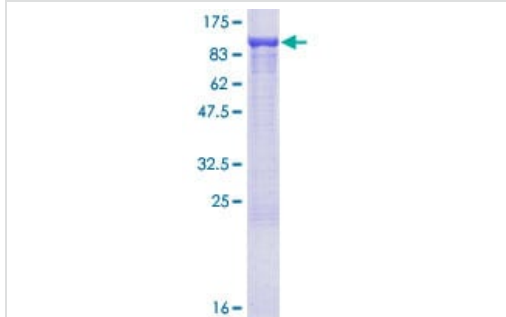
Preparation and Storage

Stability and Storage	Shipped on dry ice. Upon delivery aliquot and store at -80°C. Avoid freeze / thaw cycles. pH: 8.00 Constituents: 0.31% Glutathione, 0.79% Tris HCl
------------------------------	--

General Info

Function	Acts as a RAC1 guanine nucleotide exchange factor (GEF).
Tissue specificity	Ubiquitous.
Involvement in disease	Defects in ARHGEF6 are the cause of mental retardation X-linked type 46 (MRX46) [MIM:300436]. Mental retardation is a mental disorder characterized by significantly sub-average general intellectual functioning associated with impairments in adaptive behavior and manifested during the developmental period. Non-syndromic mental retardation patients do not manifest other clinical signs.
Sequence similarities	Contains 1 CH (calponin-homology) domain. Contains 1 DH (DBL-homology) domain. Contains 1 PH domain. Contains 1 SH3 domain.

Images



SDS-PAGE - Recombinant Human ARHGEF6
protein (ab160497)

ab160497 on a 12.5% SDS-PAGE stained with Coomassie Blue.

Please note: All products are "FOR RESEARCH USE ONLY. NOT FOR USE IN DIAGNOSTIC PROCEDURES"

Our Abpromise to you: Quality guaranteed and expert technical support

- Replacement or refund for products not performing as stated on the datasheet
- Valid for 12 months from date of delivery
- Response to your inquiry within 24 hours
- We provide support in Chinese, English, French, German, Japanese and Spanish
- Extensive multi-media technical resources to help you
- We investigate all quality concerns to ensure our products perform to the highest standards

If the product does not perform as described on this datasheet, we will offer a refund or replacement. For full details of the Abpromise, please visit <https://www.abcam.com/abpromise> or contact our technical team.

Terms and conditions

- Guarantee only valid for products bought direct from Abcam or one of our authorized distributors