

Recombinant Human ATF7 protein ab161243

1 Image

Description

Product name	Recombinant Human ATF7 protein
Expression system	Wheat germ
Protein length	Full length protein
Animal free	No
Nature	Recombinant
Species	Human
Sequence	MGDDRPFVCNAPGCGQRFTNEDHLAVHKHKHEMTLKFG PARTDSVIADQ TPTPTRFLKNCEEVGLFNELASSFEHEFKKAADEDEKKA AAGPLDMSLPS TPDIKIEEEPVEVDSSPPDSPASSPCSPPLKEKEVTPKP VLISTPTPTI VRPGSLPLHLGYDPLHPTLPSPSTSVITQAPPSNRQMGSP T GSLPLVMHLA NGQTMPVLPGPPVQMPSVISLARPVSMV PNIPGIPGPPVN SSGSISPSGH PIPSEAKMRLKATLTHQVSSINGGCGMVVGTASTMVTARP EQSQILIQHP DAPSPAQPQVSPAQPTPSTGGRRRRTVDEDPDERRQRF LERNRAAASRCR QKRKLWVSSLEKKAEELTSQNIQLSNEVTLLRNEVAQLKQ LLLAHKDCPV TALQKKTQGYLESPKESSEPTGSPAPVIQHSSATAPSNGL SVRSAAEAVA TSVLTQMASQRTELSMPIQSHVIMTPQSQSAGR
Amino acids	1 to 483
Tags	GST tag N-Terminus

Specifications

Our **Abpromise guarantee** covers the use of **ab161243** in the following tested applications.

The application notes include recommended starting dilutions; optimal dilutions/concentrations should be determined by the end user.

Applications	Western blot
--------------	--------------

	ELISA
<b>Form</b>	Liquid
<b>Additional notes</b>	

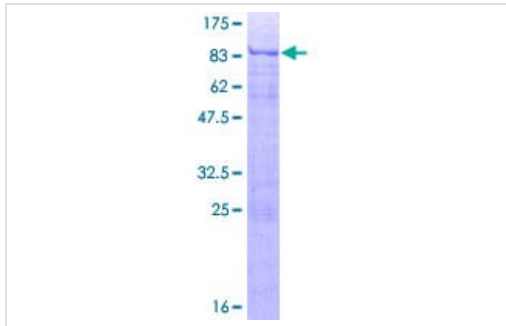
## Preparation and Storage

<b>Stability and Storage</b>	<p>Shipped on dry ice. Upon delivery aliquot and store at -80°C. Avoid freeze / thaw cycles.</p> <p>pH: 8.00</p> <p>Constituents: 0.31% Glutathione, 0.79% Tris HCl</p>
------------------------------	---

## General Info

<b>Function</b>	<p>Plays important functions in early cell signaling. Binds the cAMP response element (CRE) (consensus: 5'-GTGACGT[AG][AG]-3'), a sequence present in many viral and cellular promoters. Activator of the NF-ELAM1/delta-A site of the E-selectin promoter. Has no intrinsic transcriptional activity, but activates transcription on formation of JUN or FOS heterodimers. Also can bind TRE promoter sequences when heterodimerized with members of the JUN family.</p> <p>Isoform 4/ATF-A0 acts as a dominant repressor of the E-selectin/NF-ELAM1/delta-A promoter.</p>
<b>Tissue specificity</b>	<p>Expressed in heart, lung and skeletal muscle. Isoform 4 is expressed in various tissues including heart, brain, placenta, lung and skeletal muscle. Highest levels in skeletal muscle. Lowest in lung and placenta.</p>
<b>Sequence similarities</b>	<p>Belongs to the bZIP family.</p> <p>Contains 1 bZIP domain.</p> <p>Contains 1 C2H2-type zinc finger.</p>
<b>Post-translational modifications</b>	<p>On EGF stimulation, phosphorylated first on Thr-53 allowing subsequent phosphorylation on Thr-51. This latter phosphorylation prevents sumoylation, increases binding to TAF12 and enhances transcriptional activity.</p> <p>Sumoylation delays nuclear localization and inhibits transactivation activity through preventing binding to TAF12. RANBP2 appears to be the specific E3 ligase.</p>
<b>Cellular localization</b>	<p>Nucleus. Nucleus &gt; nucleoplasm. Mainly nucleoplasmic. Restricted distribution to the perinuclear region. The sumoylated form locates to the nuclear periphery.</p>

## Images



SDS-PAGE - Recombinant Human ATF7 protein  
(ab161243)

ab161243 on a 12.5% SDS-PAGE stained with Coomassie Blue.

**Please note:** All products are "FOR RESEARCH USE ONLY. NOT FOR USE IN DIAGNOSTIC PROCEDURES"

### Our Abpromise to you: Quality guaranteed and expert technical support

---

- Replacement or refund for products not performing as stated on the datasheet
- Valid for 12 months from date of delivery
- Response to your inquiry within 24 hours
- We provide support in Chinese, English, French, German, Japanese and Spanish
- Extensive multi-media technical resources to help you
- We investigate all quality concerns to ensure our products perform to the highest standards

If the product does not perform as described on this datasheet, we will offer a refund or replacement. For full details of the Abpromise, please visit <https://www.abcam.com/abpromise> or contact our technical team.

### Terms and conditions

---

- Guarantee only valid for products bought direct from Abcam or one of our authorized distributors