

Product datasheet

Recombinant Human beta 2 Microglobulin protein ab98116

[3 References](#) [1 Image](#)

Description

Product name	Recombinant Human beta 2 Microglobulin protein
Purity	> 95 % SDS-PAGE. ab98116 is purified by using conventional chromatography techniques.
Expression system	Escherichia coli
Accession	<u>P61769</u>
Protein length	Full length protein
Animal free	No
Nature	Recombinant
Species	Human
Sequence	MGSSHHHHHH SSGLVPRGSH MIQRTPKIQV YSRHPAENGK SNFLNCYVSG FHPSDIEVDL LKNGERIEKV EHS DLSFSKD WSFYLLYTE FTPTEKDEYA CRVNHVTLSQ PKVKWDRDM
Predicted molecular weight	14 kDa including tags
Amino acids	21 to 119
Tags	His tag N-Terminus

Specifications

Our **Abpromise guarantee** covers the use of **ab98116** in the following tested applications.

The application notes include recommended starting dilutions; optimal dilutions/concentrations should be determined by the end user.

Applications	SDS-PAGE Mass Spectrometry
Mass spectrometry	MALDI-TOF
Form	Liquid

Preparation and Storage

Stability and Storage Shipped at 4°C. Upon delivery aliquot and store at -20°C or -80°C. Avoid repeated freeze / thaw

cycles.

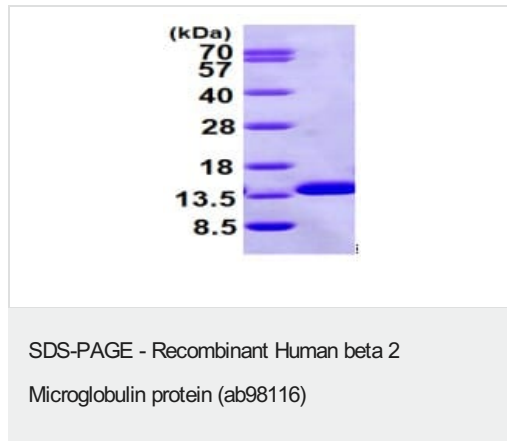
pH: 8.00

Constituents: 0.0308% DTT, 0.316% Tris HCl, 20% Glycerol (glycerin, glycerine), 0.58% Sodium chloride

General Info

Function	Component of the class I major histocompatibility complex (MHC). Involved in the presentation of peptide antigens to the immune system.
Involvement in disease	Defects in B2M are the cause of hypercatabolic hypoproteinemia (HYCATHYP) [MIM:241600]. Affected individuals show marked reduction in serum concentrations of immunoglobulin and albumin, probably due to rapid degradation. Note=Beta-2-microglobulin may adopt the fibrillar configuration of amyloid in certain pathologic states. The capacity to assemble into amyloid fibrils is concentration dependent. Persistently high beta(2)-microglobulin serum levels lead to amyloidosis in patients on long-term hemodialysis.
Sequence similarities	Belongs to the beta-2-microglobulin family. Contains 1 Ig-like C1-type (immunoglobulin-like) domain.
Post-translational modifications	Glycation of Ile-21 is observed in long-term hemodialysis patients.
Cellular localization	Secreted. Detected in serum and urine.

Images



15% SDS-PAGE analysis of ab98116 (3ug)

Please note: All products are "FOR RESEARCH USE ONLY. NOT FOR USE IN DIAGNOSTIC PROCEDURES"

Our Promise to you: Quality guaranteed and expert technical support

- Replacement or refund for products not performing as stated on the datasheet
- Valid for 12 months from date of delivery
- Response to your inquiry within 24 hours
- We provide support in Chinese, English, French, German, Japanese and Spanish
- Extensive multi-media technical resources to help you

- We investigate all quality concerns to ensure our products perform to the highest standards

If the product does not perform as described on this datasheet, we will offer a refund or replacement. For full details of the Abpromise, please visit <https://www.abcam.com/abpromise> or contact our technical team.

Terms and conditions

- Guarantee only valid for products bought direct from Abcam or one of our authorized distributors