

Product datasheet

Recombinant human BMP2 protein ab155700

2 Images

Description

Product name	Recombinant human BMP2 protein
Biological activity	Immobilized Human BMP-2, Tag Free ab155700 at 2 µg/mL (100 µL/well) can bind Recombinant human Gremlin 1 protein (Fc Chimera Active) (ab220453) with a linear range of 5-78 ng/mL (QC tested).
Purity	> 95 % SDS-PAGE. Lyophilized from 0.22µm filtered solution
Endotoxin level	< 1.000 Eu/µg
Expression system	Escherichia coli
Accession	<u>P12643</u>
Protein length	Protein fragment
Animal free	No
Nature	Recombinant
Species	Human
Sequence	QAKHKQRKRLKSSCKRHPLYVDFSDVGWNDWVAPPGY HAFYCHGECPPF LADHLNSTNH AMQTLVNSVNSKIPKACCVPTELSAISMLYLDENEKV VLKNYQDMVVEGCGCR
Predicted molecular weight	13 kDa
Amino acids	283 to 396

Specifications

Our **Abpromise guarantee** covers the use of **ab155700** in the following tested applications.

The application notes include recommended starting dilutions; optimal dilutions/concentrations should be determined by the end user.

Applications	Functional Studies SDS-PAGE
Form	Lyophilized

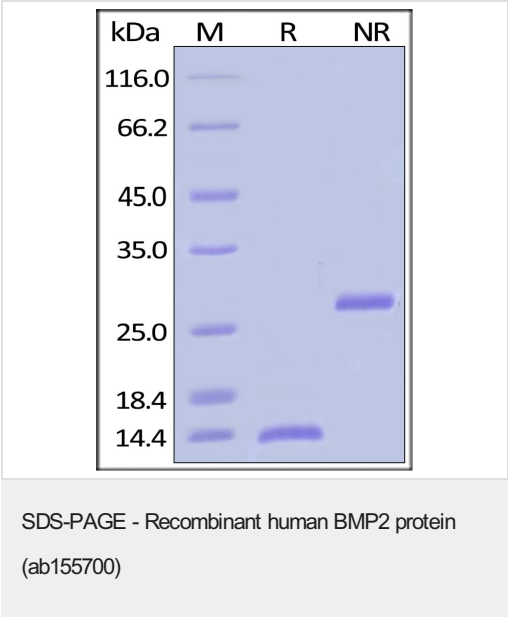
Preparation and Storage

Stability and Storage	<p>Shipped at 4°C. Store at +4°C short term (1-2 weeks). Upon delivery aliquot. Store at -20°C or -80°C. Avoid freeze / thaw cycle.</p> <p>pH: 7.4</p> <p>Constituents: 0.6% Acetic acid, 5% Trehalose</p> <p>This product is an active protein and may elicit a biological response in vivo, handle with caution.</p>
Reconstitution	<p>Reconstitute with 100mM acetic acid to a concentration of 100 µg/ml.</p>

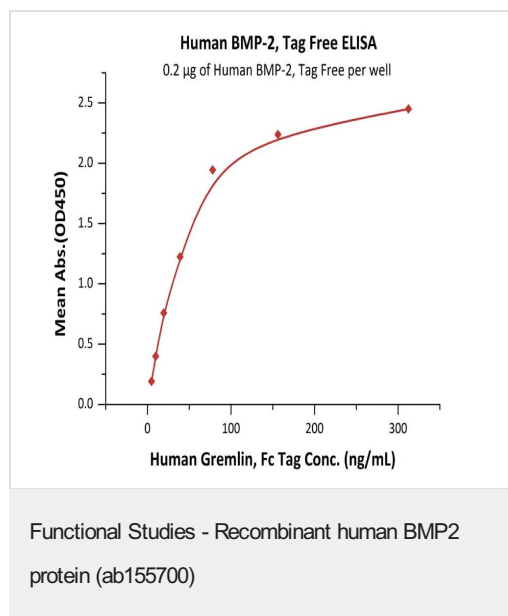
General Info

Function	Induces cartilage and bone formation.
Tissue specificity	Particularly abundant in lung, spleen and colon and in low but significant levels in heart, brain, placenta, liver, skeletal muscle, kidney, pancreas, prostate, ovary and small intestine.
Sequence similarities	Belongs to the TGF-beta family.
Cellular localization	Secreted.

Images



ab155700 on SDS-PAGE under reducing (R) and non-reducing (NR) conditions. The gel was stained overnight with Coomassie Blue. The purity of the protein is greater than 95%.



Immobilized Human BMP-2, Tag Free ab155700 at 2 µg/mL (100 µL/well) can bind Recombinant human Gremlin 1 protein (Fc Chimera Active) ([ab220453](#)) with a linear range of 5-78 ng/mL (QC tested).

Please note: All products are "FOR RESEARCH USE ONLY. NOT FOR USE IN DIAGNOSTIC PROCEDURES"

Our Abpromise to you: Quality guaranteed and expert technical support

- Replacement or refund for products not performing as stated on the datasheet
- Valid for 12 months from date of delivery
- Response to your inquiry within 24 hours
- We provide support in Chinese, English, French, German, Japanese and Spanish
- Extensive multi-media technical resources to help you
- We investigate all quality concerns to ensure our products perform to the highest standards

If the product does not perform as described on this datasheet, we will offer a refund or replacement. For full details of the Abpromise, please visit <https://www.abcam.com/abpromise> or contact our technical team.

Terms and conditions

- Guarantee only valid for products bought direct from Abcam or one of our authorized distributors