

## Product datasheet

# Recombinant Human BMP2 protein ab87065

[2 References](#) [2 Images](#)

### Description

<b>Product name</b>	Recombinant Human BMP2 protein
<b>Purity</b>	> 95 % SDS-PAGE.
<b>Expression system</b>	Escherichia coli
<b>Accession</b>	<b><u>P12643</u></b>
<b>Protein length</b>	Full length protein
<b>Animal free</b>	No
<b>Nature</b>	Recombinant
<b>Species</b>	Human
<b>Sequence</b>	MQAKHKQRKR LKSSCKRHPL YVDFSDVGWN DWIVAPPGYH AFYCHGEC PF PLADHLNSTN HAIVQTLVNS VNSKIPKACC VPTELSAISM LYLDENEKVV LKNYQDMVVE GCGCR
<b>Predicted molecular weight</b>	13 kDa
<b>Amino acids</b>	283 to 396
<b>Additional sequence information</b>	This is the full length mature protein from aa283 to 396. It does not contain the signal peptide and propeptide.

### Specifications

Our **Abpromise guarantee** covers the use of **ab87065** in the following tested applications.

The application notes include recommended starting dilutions; optimal dilutions/concentrations should be determined by the end user.

<b>Applications</b>	SDS-PAGE Western blot
<b>Form</b>	Liquid
<b>Additional notes</b>	Endotoxin Level: < 1.0 EU per 1 µg of protein (determined by LAL method)

### Preparation and Storage

<b>Stability and Storage</b>	Shipped at 4°C. Store at +4°C short term (1-2 weeks). Upon delivery aliquot. Store at -20°C or -80°C. Avoid freeze / thaw cycle.
------------------------------	--

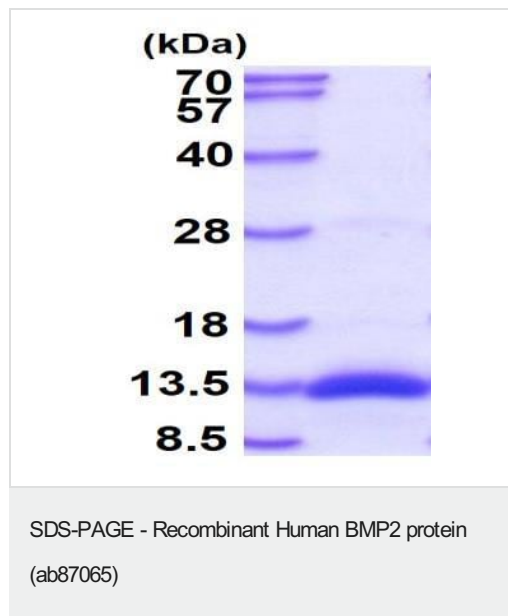
pH: 3.50

Constituents: 0.294% Sodium citrate, 10% Glycerol (glycerin, glycerine)

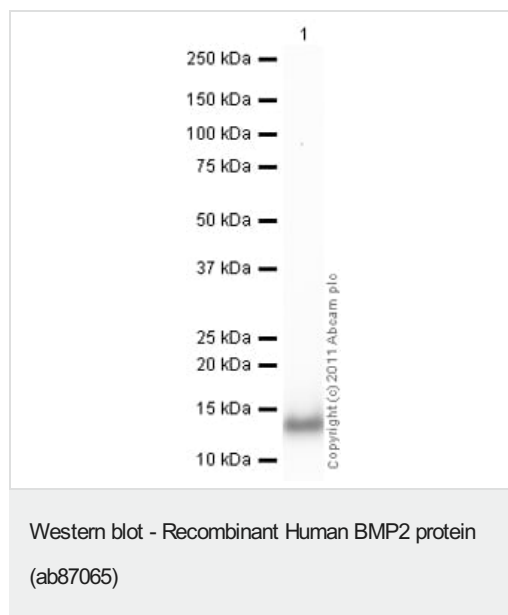
## General Info

<b>Function</b>	Induces cartilage and bone formation.
<b>Tissue specificity</b>	Particularly abundant in lung, spleen and colon and in low but significant levels in heart, brain, placenta, liver, skeletal muscle, kidney, pancreas, prostate, ovary and small intestine.
<b>Sequence similarities</b>	Belongs to the TGF-beta family.
<b>Cellular localization</b>	Secreted.

## Images



15% SDS-Page showing ab87065 (3ug)



**All lanes** : Anti-BMP2 antibody ([ab17885](#)) at 0.1 µg/ml

**Lane 1** : Recombinant Human BMP2 protein (ab87065) at 0.01 µg

**Lane 2** : Recombinant Human BMP2 protein (ab87065) at 0.001 µg

**Lane 3** : Recombinant Human BMP2 protein (ab87065) at 0.0001 µg

### Secondary

**All lanes** : Goat Anti-Rabbit IgG H&L (HRP) preadsorbed ([ab97080](#)) at 1/5000 dilution

Developed using the ECL technique.

Performed under reducing conditions.

**Exposure time:** 30 seconds

**Please note:** All products are "FOR RESEARCH USE ONLY. NOT FOR USE IN DIAGNOSTIC PROCEDURES"

#### **Our Abpromise to you: Quality guaranteed and expert technical support**

---

- Replacement or refund for products not performing as stated on the datasheet
- Valid for 12 months from date of delivery
- Response to your inquiry within 24 hours
- We provide support in Chinese, English, French, German, Japanese and Spanish
- Extensive multi-media technical resources to help you
- We investigate all quality concerns to ensure our products perform to the highest standards

If the product does not perform as described on this datasheet, we will offer a refund or replacement. For full details of the Abpromise, please visit <https://www.abcam.com/abpromise> or contact our technical team.

#### **Terms and conditions**

---

- Guarantee only valid for products bought direct from Abcam or one of our authorized distributors