

Product datasheet

Recombinant Human BMPER protein ab165805

1 Image

Description

Product name	Recombinant Human BMPER protein
Expression system	Wheat germ
Protein length	Full length protein
Animal free	No
Nature	Recombinant
Species	Human

Sequence

MLWFSGVGALAERYCRRSPGITCCVLLLLNCSGVPMSLA
SSFLTGSVAKC
ENEDEVLQIPFITDNPICMCVCLNKEVTCKREKCPVLSRD
CALAIKQRGA
CCEQCKGCTYEGNTYNSSFQWQSPAEPVLRQCQEGVV
TESGVRCVVHCK
NPLEHLGMCCPTCPGCVFEGVQYQEGEEFQPEGSKCTK
CSCTGGRTQCVR
EVCPIILSCPQHLSHIPPGQCCPKCLGQRKVFDFPFGSCLF
RSDVYDNGSS
FLYDNCTACTCRDSTVVCKRKCSHPGGCDQGQEGCCEE
CLLRVPPEDIKV
CKFGNKIFQDGEWSSINCTICACVKGRTECRNKQCIPISS
CPQGKILNR
KGCCPICTEKPGVCTVFGDPHYNTFDGRTFNFQGTCCQV
LTKDCSSPASP
FQVLVKNDARRTRFSWTKSVELVLGESRVSLQQHLTVR
WNGSRIALPCR
APHFHIDLGDGYLLKVTTKAGLEISWDGDSFVEVMAAPHLK
GKLCGLCGNY
NGHKRDDLIGDGNFKFDVDDFAESWRVESNEFCNRPQ
RKPVPELCQGTV
KVKLRAHRECQKLKSWEFQTCHSTVDYATFYRSCVTDMC
ECPVHKNCYCE
SFLAYTRACQREGIKVHWEPQQNCAATQCKHGAVYDTCG
PGCIKTCDNWN
EIGPCNKPCVAGCHCPANLVLHKGRCIKPVLCPQR

Amino acids

1 to 685

Tags GST tag N-Terminus

Specifications

Our **Abpromise guarantee** covers the use of **ab165805** in the following tested applications.

The application notes include recommended starting dilutions; optimal dilutions/concentrations should be determined by the end user.

Applications ELISA
Western blot

Form Liquid

Additional notes

Preparation and Storage

Stability and Storage Shipped on dry ice. Upon delivery aliquot and store at -80°C. Avoid freeze / thaw cycles.
pH: 8.00
Constituents: 0.31% Glutathione, 0.79% Tris HCl

General Info

Function Inhibitor of bone morphogenetic protein (BMP) function, it may regulate BMP responsiveness of osteoblasts and chondrocytes.

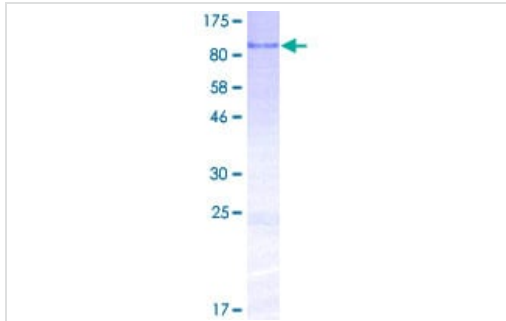
Tissue specificity Highly expressed in lung, and brain and also in primary chondrocytes.

Involvement in disease Defects in BMPER are the cause of diaphanospondylodysostosis (DSD) [MIM:608022]. A rare, recessively inherited, perinatal lethal skeletal disorder. The primary skeletal characteristics of the phenotype include a small chest, abnormal vertebral segmentation, and posterior rib gaps containing incompletely differentiated mesenchymal tissue. Consistent craniofacial features include ocular hypertelorism, epicanthal folds, a depressed nasal bridge with a short nose, and low-set ears. The most commonly described extraskelatal finding is nephroblastomatosis with cystic kidneys, but other visceral findings have been described in some cases.

Sequence similarities Contains 1 TIL (trypsin inhibitory-like) domain.
Contains 5 VWFC domains.
Contains 1 VWFD domain.

Cellular localization Secreted.

Images



SDS-PAGE - Recombinant Human BMPER protein
(ab165805)

ab165805 on a 12.5% SDS-PAGE stained with Coomassie Blue.

Please note: All products are "FOR RESEARCH USE ONLY. NOT FOR USE IN DIAGNOSTIC PROCEDURES"

Our Abpromise to you: Quality guaranteed and expert technical support

- Replacement or refund for products not performing as stated on the datasheet
- Valid for 12 months from date of delivery
- Response to your inquiry within 24 hours

- We provide support in Chinese, English, French, German, Japanese and Spanish
- Extensive multi-media technical resources to help you
- We investigate all quality concerns to ensure our products perform to the highest standards

If the product does not perform as described on this datasheet, we will offer a refund or replacement. For full details of the Abpromise, please visit <https://www.abcam.com/abpromise> or contact our technical team.

Terms and conditions

- Guarantee only valid for products bought direct from Abcam or one of our authorized distributors