

Product datasheet

Recombinant Human BNP protein ab87200

[2 References](#) [1 Image](#)

Description

Product name	Recombinant Human BNP protein
Purity	> 85 % SDS-PAGE. ab87200 is purified using conventional chromatography techniques.
Endotoxin level	< 1.000 Eu/μg
Expression system	Escherichia coli
Accession	<u>NP_002512.1</u>
Protein length	Protein fragment
Animal free	No
Nature	Recombinant
Species	Human
Sequence	MGSSHHHHHH SSGLVPRGSH MHPLGSPGSA SDLETSGLQE QRNHLQGKLS ELQVEQTSLE PLQESPRPTG VWKSREVATE GIRGHRKMVL YTLRAPRSPK MVQSGGCFGR KMDRISSSSG LGCKVLRRH
Predicted molecular weight	14 kDa
Actual molecular weight	14 kDa
Amino acids	27 to 132
Additional sequence information	His-tag

Specifications

Our **Abpromise guarantee** covers the use of **ab87200** in the following tested applications.

The application notes include recommended starting dilutions; optimal dilutions/concentrations should be determined by the end user.

Applications	SDS-PAGE
Form	Liquid

Preparation and Storage

Stability and Storage Shipped at 4°C. Upon delivery aliquot. Store at -20°C or -80°C. Avoid freeze / thaw cycle.

pH: 7.40

Constituents: PBS, 40% Glycerol (glycerin, glycerine), 0.03% (R*,R*)-1,4-Dimercaptobutan-2,3-diol, 0.002% PMSF, 0.029% EDTA

General Info

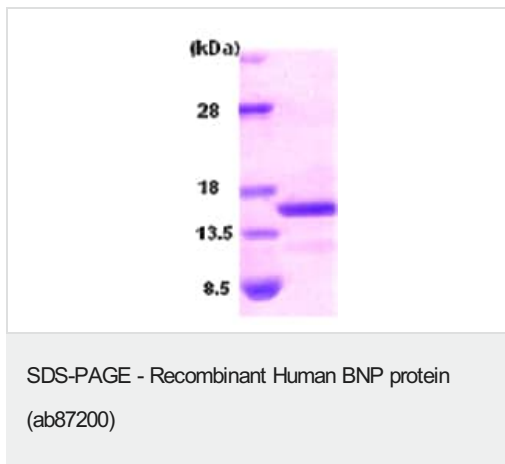
Relevance

Brain natriuretic peptide (BNP) circulates in blood as a peptide hormone with natriuretic, vasodilatory and renin inhibitory properties. BNP is secreted predominantly by the left ventricular myocytes in response to volume expansion and pressure overload. BNP belongs to a family of structurally similar peptide hormones, which includes atrial natriuretic peptide (ANP), BNP, C type natriuretic peptide (CNP) and urodilatin. These peptides are characterized by a common 17 amino acid ring structure with a disulfide bond between two cysteine residues. This ring structure shows high homology between different natriuretic peptides (eleven of the 17 amino acid residues are homologous in the ring of each of the natriuretic peptides). BNP is a 32 amino acid peptide with disulfide bond between the cysteine residues Cys10 and Cys26. In earlier studies it has been demonstrated that BNP concentration in blood increases with the severity of congestive heart failure. Quantitative measurement of BNP in blood provides an objective indicator of congestive heart failure severity.

Cellular localization

Secreted

Images



15% SDS-PAGE showing ab87200 at approximately 14kDa (3µg).

Please note: All products are "FOR RESEARCH USE ONLY. NOT FOR USE IN DIAGNOSTIC PROCEDURES"

Our Abpromise to you: Quality guaranteed and expert technical support

- Replacement or refund for products not performing as stated on the datasheet
- Valid for 12 months from date of delivery
- Response to your inquiry within 24 hours
- We provide support in Chinese, English, French, German, Japanese and Spanish
- Extensive multi-media technical resources to help you
- We investigate all quality concerns to ensure our products perform to the highest standards

If the product does not perform as described on this datasheet, we will offer a refund or replacement. For full details of the Abpromise, please visit <https://www.abcam.com/abpromise> or contact our technical team.

Terms and conditions

- Guarantee only valid for products bought direct from Abcam or one of our authorized distributors