

Product datasheet

Recombinant Human C Reactive Protein ab51784

[1 Abreviews](#) [2 Images](#)

Description

Product name	Recombinant Human C Reactive Protein
Purity	> 95 % SDS-PAGE. >95% by SDS-PAGE, HPLC analysis and anion exchange FPLC. Recombinant Human CRP is purified by proprietary chromatographic techniques.
Expression system	Escherichia coli
Accession	<u>P02741</u>
Protein length	Full length protein
Animal free	No
Nature	Recombinant
Species	Human
Sequence	AA Sequence: MEKLLCFLVL TSLSHAFGQT DMSRKAFVFP KESDTSYVSL KAPLTKPLKA FTVCLHFYTE LSSTRGYSIF SYATKRQDNE ILIFWSKDIG YSFTVGGSEI LFEVPEVTVA PVHICTSWES ASGIVEFWVD GKPRVRKSLK KGYTVGAEAS IILGQEQDSF GGNFEGSQSL VGDIGNVNMW DFVLSPEIN TYLGPFSP NVLNWRALKY EVQGEVFTKP QLWP
Predicted molecular weight	115 kDa
Amino acids	1 to 224

Specifications

Our **Abpromise guarantee** covers the use of **ab51784** in the following tested applications.

The application notes include recommended starting dilutions; optimal dilutions/concentrations should be determined by the end user.

Applications	SDS-PAGE Western blot
Form	Liquid
Additional notes	This product is manufactured by BioVision, an Abcam company and was previously called 4863 CRP, human recombinant. 4863-10 is the same size as the 10 µg size of ab51784. Endotoxin level is <0.1 ng/µg.

Preparation and Storage

Stability and Storage

Shipped at 4°C. Store at -20°C. Avoid freeze / thaw cycle. For long term storage it is recommended to add a carrier protein on reconstitution (0.1% HSA or BSA). Reconstitute for long term storage.

pH: 7.5

Preservative: 0.05% Sodium azide

Constituents: 0.81% Sodium chloride, 0.24% Tris, 0.02% Calcium chloride

General Info

Function

Displays several functions associated with host defense: it promotes agglutination, bacterial capsular swelling, phagocytosis and complement fixation through its calcium-dependent binding to phosphorylcholine. Can interact with DNA and histones and may scavenge nuclear material released from damaged circulating cells.

Tissue specificity

Found in plasma.

Sequence similarities

Belongs to the pentaxin family.

Contains 1 pentaxin domain.

Cellular localization

Secreted.

Images



Western blot - Recombinant Human C Reactive Protein (ab51784)

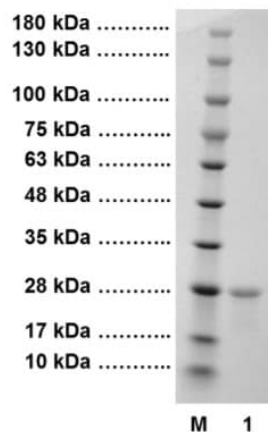
Anti-C Reactive Protein antibody ([ab78051](#)) at 1 µg/ml +
Recombinant Human C Reactive Protein (ab51784) at 0.01 µg

Secondary

Goat Anti-Rabbit IgG H&L (HRP) preadsorbed ([ab97080](#)) at
1/5000 dilution

Performed under reducing conditions.

Exposure time: 1 minute



4-20% SDS-PAGE of Human CRP: 5 ug of Recombinant human CRP (C-reactive protein) loaded in each lane under reducing conditions and stained with Coomassie Blue. Recombinant human CRP has a predicted MW of ~ 115 kDa corresponding to the pentameric structure of 23 kDa monomers.

SDS-PAGE - Recombinant Human C Reactive Protein (ab51784)

Please note: All products are "FOR RESEARCH USE ONLY. NOT FOR USE IN DIAGNOSTIC PROCEDURES"

Our Abpromise to you: Quality guaranteed and expert technical support

- Replacement or refund for products not performing as stated on the datasheet
- Valid for 12 months from date of delivery
- Response to your inquiry within 24 hours
- We provide support in Chinese, English, French, German, Japanese and Spanish
- Extensive multi-media technical resources to help you
- We investigate all quality concerns to ensure our products perform to the highest standards

If the product does not perform as described on this datasheet, we will offer a refund or replacement. For full details of the Abpromise, please visit <https://www.abcam.com/abpromise> or contact our technical team.

Terms and conditions

- Guarantee only valid for products bought direct from Abcam or one of our authorized distributors