

# Recombinant Human Calcineurin A protein ab101870

2 Images

Description	
Product name	Recombinant Human Calcineurin A protein
Purity	> 85 % SDS-PAGE. ab101870 was purified using conventional chromatography techniques.
Expression system	Escherichia coli
Accession	<u>Q08209-2</u>
Protein length	Full length protein
Animal free	No
Nature	Recombinant
Species	Human
Sequence	<p><b>MGSSHHHHHHSSGLVPRGSH</b>TGSMSEPKAIDPKLSTTD RVVKAVPFPPSH RLTAKEVFDNDGKPRVDILKAHLMKEGRLEESVALRIITEG ASILRQEKN LLDIDAPVTVCGDIHGQFFDLMKLFEVGGSPANTRYLFLG DYVDRGYFSI ECVLYLWALKILYPKTLFLLRGNHECRHLTEYFTFKQECKIK YSERVYDA CMDAFDCLPLAALMNQQFLCVHGGLSPEINTLDDIRKLDR FKEPPAYGPM CDILWSDPLEDFGNEKTQEHTHTNVRGCSYFYSPAVC EFLQHNNLLSI LRAHEAQDAGYRMYRKSQTTGFPSLITIFSAPNYLDVYNNK AAVLKYENN VMNIRQFNCSHPYWLPNFMDVFTWSLPFVGEKVTEMLV NVLNICSDDDEL GSEEDGFDGATAAARKEVIRNKIRAIGKMARVFSVLREES ESVLTCLKGLT PTGMLPSGVLSGGKQTLQSAIKGFSPQHKITSFEEAKGLD RINERMPPRR DAMPSDANLNSINKALTSETNGTDSNGSNSSNIQ</p>
Predicted molecular weight	60 kDa including tags
Amino acids	1 to 511
Tags	His tag N-Terminus

## Specifications

Our **Abpromise guarantee** covers the use of **ab101870** in the following tested applications.

The application notes include recommended starting dilutions; optimal dilutions/concentrations should be determined by the end user.

**Applications** Western blot  
SDS-PAGE

**Form** Liquid

## Preparation and Storage

**Stability and Storage** Shipped at 4°C. Store at +4°C short term (1-2 weeks). Upon delivery aliquot. Store at -20°C or -80°C. Avoid freeze / thaw cycle.  
pH: 8.00  
Constituents: 0.077% DTT, 0.316% Tris HCl, 0.0292% EDTA, 20% Glycerol (glycerin, glycerine), 1.16% Sodium chloride

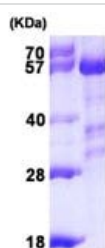
## General Info

**Function** Calcium-dependent, calmodulin-stimulated protein phosphatase. This subunit may have a role in the calmodulin activation of calcineurin. Dephosphorylates DNM1L, HSPB1 and SSH1.

**Sequence similarities** Belongs to the PPP phosphatase family. PP-2B subfamily.

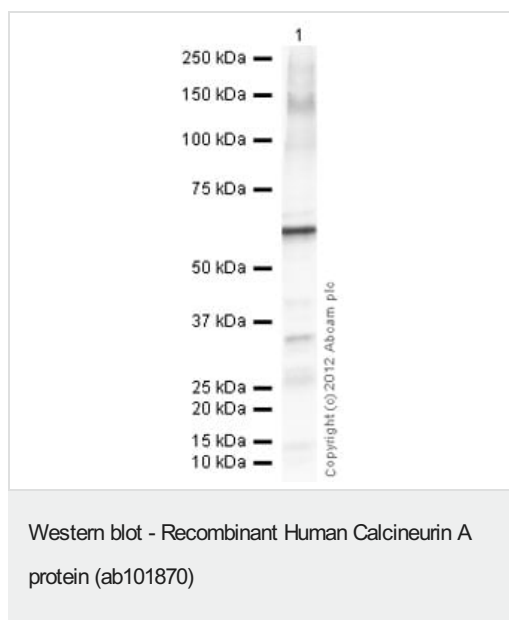
**Cellular localization** Nucleus. Colocalizes with ACTN1 and MYOZ2 at the Z line in heart and skeletal muscle.

## Images



15% SDS PAGE analysis of 3µg ab101870.

SDS-PAGE - Recombinant Human Calcineurin A  
protein (ab101870)



Anti-Calcineurin A antibody (**ab3673**) at 1/1000 dilution +  
Recombinant Human Calcineurin A protein (ab101870) at 0.1 µg

### Secondary

Goat Anti-Rabbit IgG H&L (HRP) preadsorbed (**ab97080**) at  
1/5000 dilution

Developed using the ECL technique.

Performed under reducing conditions.

**Exposure time:** 10 seconds

**Please note:** All products are "FOR RESEARCH USE ONLY. NOT FOR USE IN DIAGNOSTIC PROCEDURES"

### Our Abpromise to you: Quality guaranteed and expert technical support

- Replacement or refund for products not performing as stated on the datasheet
- Valid for 12 months from date of delivery
- Response to your inquiry within 24 hours
- We provide support in Chinese, English, French, German, Japanese and Spanish
- Extensive multi-media technical resources to help you
- We investigate all quality concerns to ensure our products perform to the highest standards

If the product does not perform as described on this datasheet, we will offer a refund or replacement. For full details of the Abpromise, please visit <https://www.abcam.com/abpromise> or contact our technical team.

### Terms and conditions

- Guarantee only valid for products bought direct from Abcam or one of our authorized distributors