

Recombinant Human CAMKIV protein ab119450

1 Image

Description

Product name	Recombinant Human CAMKIV protein
Purity	> 85 % SDS-PAGE. ab119450 was purified using conventional chromatography. Purity is > 85% by SDS-PAGE.
Expression system	Escherichia coli
Accession	<u>Q16566</u>
Protein length	Full length protein
Animal free	No
Nature	Recombinant
Species	Human
Sequence	MGSSHHHHHHSSGLVPRGSHMGSHMLKVTVPSCSASSC SSVTASAAPGTA SLVPDYWIDGNSRDALSDFFEVESELGRGATSVYRCKQK GTQKPYALKV LKKTVDKKVRTEIGVLLRLSHPNIIKLKEIFETPTEISLVLELV TGCEL FDRMEKGYYSERDAADAVKQILEAVAYLHENGIVHRDLKP ENLLYATPA PDAPLKIADFGLSKMEHQVLMKTVCGTPGYCAPEILRGCA YGPEVDMWS VGITYILLCGFEPFYDERGDQFMFRRILNCEYYFISPWWDE VSLNAKDL VRKLVLDPKKRLTTFQALQHPWVTGKAANFVHMDTAQK KLQEFNARRKL KAAVKAVVASSRLGSASSSHGSIQESHKASRDPSPIQDG NEDMKAPEGE KIQGDGAQAQAVKGAQAELMKVQALEKVKGADINAEAPK MVPKAVEDGIK VADLELEEGLAEEKLKTVEEAAAPREGQGSSAVGFVFPQ QDVILPEY
Predicted molecular weight	55 kDa including tags
Amino acids	1 to 473
Tags	His tag N-Terminus

Specifications

Our **Abpromise guarantee** covers the use of **ab119450** in the following tested applications.

The application notes include recommended starting dilutions; optimal dilutions/concentrations should be determined by the end user.

Applications SDS-PAGE

Form Liquid

Preparation and Storage

Stability and Storage Shipped at 4°C. Upon delivery aliquot and store at -20°C or -80°C. Avoid repeated freeze / thaw cycles.

pH: 8.00

Constituents: 0.32% Tris HCl, 10% Glycerol (glycerin, glycerine), 0.58% Sodium chloride

General Info

Function Calcium/calmodulin-dependent protein kinase belonging to a proposed calcium-triggered signaling cascade. May be involved in transcriptional regulation. May be involved in regulation of microtubule dynamics. In vitro, phosphorylates CREB1, CREBBP, PRM2, MEF2A, MEF2D and STMN1/OP18. May be involved in spermatogenesis. May play a role in the consolidation/retention of hippocampus-dependent long-term memory.

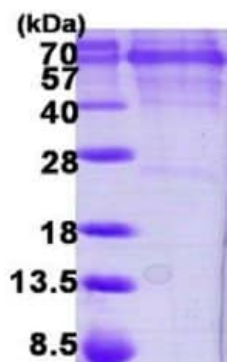
Tissue specificity Expressed in epithelial ovarian cancer tissue.

Sequence similarities Belongs to the protein kinase superfamily. CAMK Ser/Thr protein kinase family. CaMK subfamily. Contains 1 protein kinase domain.

Post-translational modifications Autophosphorylated and phosphorylated by CAMKK1 and CAMKK2 (By similarity). Dephosphorylated by serine/threonine protein phosphatase 2A, probably on Thr-200.

Cellular localization Cytoplasm. Nucleus. Substantial localization in certain neuronal nuclei. In spermatids associated with chromatin and nuclear matrix.

Images



12% SDS-PAGE showing ab119450 at approximately 54.5kDa (3µg).

SDS-PAGE - Recombinant Human CAMKIV protein
(ab119450)

Please note: All products are "FOR RESEARCH USE ONLY. NOT FOR USE IN DIAGNOSTIC PROCEDURES"

Our Abpromise to you: Quality guaranteed and expert technical support

- Replacement or refund for products not performing as stated on the datasheet
- Valid for 12 months from date of delivery
- Response to your inquiry within 24 hours

- We provide support in Chinese, English, French, German, Japanese and Spanish
- Extensive multi-media technical resources to help you
- We investigate all quality concerns to ensure our products perform to the highest standards

If the product does not perform as described on this datasheet, we will offer a refund or replacement. For full details of the Abpromise, please visit <https://www.abcam.com/abpromise> or contact our technical team.

Terms and conditions

- Guarantee only valid for products bought direct from Abcam or one of our authorized distributors