

## Product datasheet

# Recombinant Human Cardiac Troponin T protein ab86685

[2 Images](#)

### Description

<b>Product name</b>	Recombinant Human Cardiac Troponin T protein
<b>Purity</b>	> 90 % SDS-PAGE. ab86685 is purified using conventional chromatography techniques.
<b>Expression system</b>	Escherichia coli
<b>Accession</b>	<b><u>P45379-11</u></b>
<b>Protein length</b>	Full length protein
<b>Animal free</b>	No
<b>Nature</b>	Recombinant
<b>Species</b>	Human
<b>Sequence</b>	<p>MGSSHHHHHH SSGLVPRGSH MSDIEEVVEE          YEEEEQEEAA VEEQEEAAEE DAEAEAETEE          TRAEDEEEEE EAKEAEDGPM EESKPKPRSF          MPNLVPPKIP DGERVDFDDI HRKRMEKDLN          ELQALIEAHF ENRKKEEEEL VSLKDRIERR RAERAEQQRI          RNEREKERQN RLAEERARRE EEENRRKAED          EARKKKALSN MMHFGGYIQK TERKSGKRQT          EREKKKKILA ERRKVLADH LNEDQLREKA KELWQSYNL          EAEKFDLQEK FKQQKYEINV LRNRINDNQK          VSKTRGKAKV TGRWK</p>
<b>Predicted molecular weight</b>	36 kDa
<b>Amino acids</b>	1 to 285
<b>Tags</b>	His tag N-Terminus
<b>Additional sequence information</b>	Isoform 11 of Cardiac Troponin T.

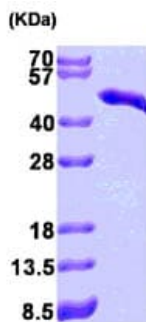
### Specifications

Our **Abpromise guarantee** covers the use of **ab86685** in the following tested applications.

The application notes include recommended starting dilutions; optimal dilutions/concentrations should be determined by the end user.

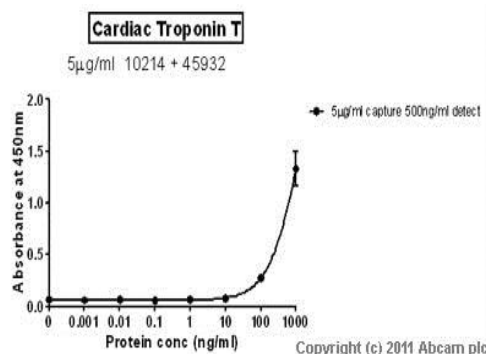
<b>Applications</b>	SDS-PAGE
	Sandwich ELISA

<b>Form</b>	Liquid
<b>Preparation and Storage</b>	
<b>Stability and Storage</b>	<p>Shipped at 4°C. Upon delivery aliquot and store at -20°C or -80°C. Avoid repeated freeze / thaw cycles.</p> <p>pH: 8.00</p> <p>Preservative: 0.0006% Imidazole</p> <p>Constituents: 0.24% Tris HCl, 50% Glycerol, 1.16% Sodium chloride, 0.0017% PMSF, 0.02% DTT</p>
<b>General Info</b>	
<b>Function</b>	Troponin T is the tropomyosin-binding subunit of troponin, the thin filament regulatory complex which confers calcium-sensitivity to striated muscle actomyosin ATPase activity.
<b>Tissue specificity</b>	Heart. The fetal heart shows a greater expression in the atrium than in the ventricle, while the adult heart shows a greater expression in the ventricle than in the atrium. Isoform 6 predominates in normal adult heart. Isoforms 1, 7 and 8 are expressed in fetal heart. Isoform 7 is also expressed in failing adult heart.
<b>Involvement in disease</b>	<p>Defects in TNNT2 are the cause of cardiomyopathy familial hypertrophic type 2 (CMH2) [MIM:115195]. Familial hypertrophic cardiomyopathy is a hereditary heart disorder characterized by ventricular hypertrophy, which is usually asymmetric and often involves the interventricular septum. The symptoms include dyspnea, syncope, collapse, palpitations, and chest pain. They can be readily provoked by exercise. The disorder has inter- and intrafamilial variability ranging from benign to malignant forms with high risk of cardiac failure and sudden cardiac death.</p> <p>Defects in TNNT2 are the cause of cardiomyopathy dilated type 1D (CMD1D) [MIM:601494]. Dilated cardiomyopathy is a disorder characterized by ventricular dilation and impaired systolic function, resulting in congestive heart failure and arrhythmia. Patients are at risk of premature death.</p> <p>Defects in TNNT2 are the cause of cardiomyopathy familial restrictive type 3 (RCM3) [MIM:612422]. Restrictive cardiomyopathy is a heart disorder characterized by impaired filling of the ventricles with reduced diastolic volume, in the presence of normal or near normal wall thickness and systolic function.</p>
<b>Sequence similarities</b>	Belongs to the troponin T family.
<b>Images</b>	



15% SDS-PAGE showing ab86685(3µg).

SDS-PAGE - Recombinant Human Cardiac Troponin T protein (ab86685)



Sandwich ELISA - Recombinant Human Cardiac Troponin T protein (ab86685)

Standard Curve for Cardiac Troponin T (Analyte: **Cardiac Troponin T protein (His tag) (ab86685)**); dilution range 1pg/ml to 1ug/ml using Capture Antibody **Mouse monoclonal [1F11] to Cardiac Troponin T (ab10214)** at 5ug/ml and Detector Antibody **Rabbit polyclonal to cardiac Troponin T (ab45932)** at 0.5ug/ml.

**Please note:** All products are "FOR RESEARCH USE ONLY. NOT FOR USE IN DIAGNOSTIC PROCEDURES"

### Our Abpromise to you: Quality guaranteed and expert technical support

- Replacement or refund for products not performing as stated on the datasheet
- Valid for 12 months from date of delivery
- Response to your inquiry within 24 hours
- We provide support in Chinese, English, French, German, Japanese and Spanish
- Extensive multi-media technical resources to help you
- We investigate all quality concerns to ensure our products perform to the highest standards

If the product does not perform as described on this datasheet, we will offer a refund or replacement. For full details of the Abpromise, please visit <https://www.abcam.com/abpromise> or contact our technical team.

### Terms and conditions

- Guarantee only valid for products bought direct from Abcam or one of our authorized distributors