

## Product datasheet

# Recombinant human Cathepsin L/MEP protein ab81780

[2 Images](#)

### Description

---

<b>Product name</b>	Recombinant human Cathepsin L/MEP protein
<b>Biological activity</b>	Specific Activity: 6000 units/mg protein. One unit will hydrolyze one nmol Z-Phe-Arg-AFC substrate per minute at 37°C in 400 mM Sodium Acetate, pH 5.5, with 4 mM EDTA and 10 mM DTT.
<b>Purity</b>	> 90 % SDS-PAGE.
<b>Expression system</b>	Escherichia coli
<b>Protein length</b>	Full length protein
<b>Animal free</b>	No
<b>Nature</b>	Recombinant
<b>Species</b>	Human

### Specifications

---

Our **[Abpromise guarantee](#)** covers the use of **ab81780** in the following tested applications.

The application notes include recommended starting dilutions; optimal dilutions/concentrations should be determined by the end user.

<b>Applications</b>	Western blot Inhibition Assay
<b>Form</b>	Liquid
<b>Additional notes</b>	This product is manufactured by BioVision, an Abcam company and was previously called 1135 Cathepsin L, human recombinant. 1135-5 is the same size as the 5 µg size of ab81780.

### Preparation and Storage

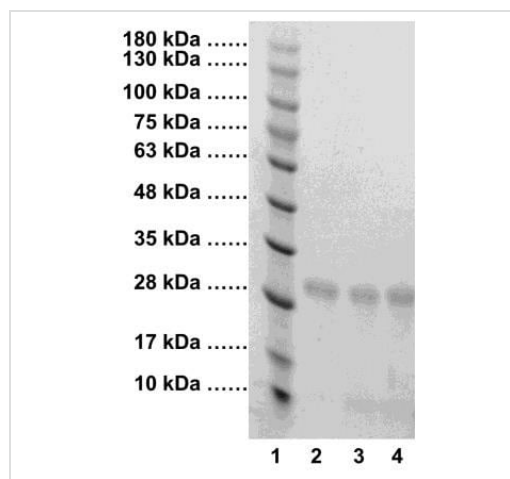
---

<b>Stability and Storage</b>	Shipped at 4°C. Add glycerol to a final volume of 50% for extra stability and aliquot. Store at -80°C. Avoid freeze / thaw cycle. Constituents: 50% Glycerol (glycerin, glycerine), 0.2% Sodium acetate, 0.29% Sodium chloride This product is an active protein and may elicit a biological response in vivo, handle with caution.
------------------------------	---

## General Info

<b>Function</b>	Important for the overall degradation of proteins in lysosomes.
<b>Sequence similarities</b>	Belongs to the peptidase C1 family.
<b>Cellular localization</b>	Lysosome.

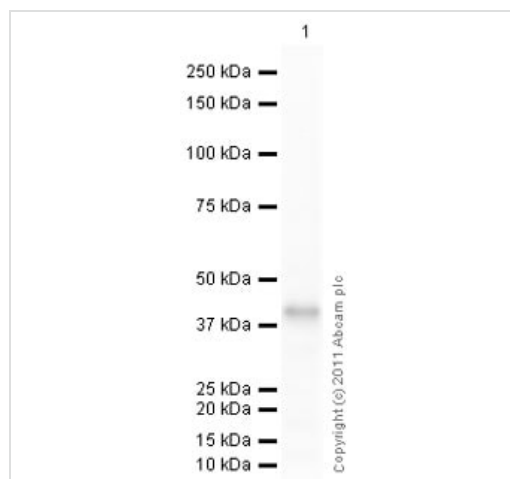
## Images



SDS-PAGE - Recombinant human Cathepsin L/MEP protein (ab81780)

SDS-PAGE (4-20%) of h-Cathepsin L/MEP ab81780:

- 1: Protein Marker
- 2: Human Cathepsin L/MEP (5 µg)
- 3: Human Cathepsin L/MEP (8 µg)
- 4: Human Cathepsin L/MEP (10 µg)



Western blot - Recombinant human Cathepsin L/MEP protein (ab81780)

Anti-Cathepsin L/MEP antibody ([ab103574](#)) at 1/500 dilution + Recombinant human Cathepsin L/MEP protein (ab81780) at 0.01 µg

### Secondary

Goat Anti-Rabbit IgG H&L (HRP) preadsorbed ([ab97080](#)) at 1/5000 dilution

Developed using the ECL technique.

Performed under reducing conditions.

**Exposure time:** 10 seconds

**Please note:** All products are "FOR RESEARCH USE ONLY. NOT FOR USE IN DIAGNOSTIC PROCEDURES"

## **Our Abpromise to you: Quality guaranteed and expert technical support**

---

- Replacement or refund for products not performing as stated on the datasheet
- Valid for 12 months from date of delivery
- Response to your inquiry within 24 hours
  
- We provide support in Chinese, English, French, German, Japanese and Spanish
- Extensive multi-media technical resources to help you
- We investigate all quality concerns to ensure our products perform to the highest standards

If the product does not perform as described on this datasheet, we will offer a refund or replacement. For full details of the Abpromise, please visit <https://www.abcam.com/abpromise> or contact our technical team.

## **Terms and conditions**

---

- Guarantee only valid for products bought direct from Abcam or one of our authorized distributors