

Recombinant Human CBP80 protein ab114735

1 Image

Description

Product name	Recombinant Human CBP80 protein
Expression system	Wheat germ
Accession	<u>Q09161</u>
Protein length	Full length protein
Animal free	No
Nature	Recombinant
Species	Human
Sequence	MSRRRHSDENDGGQPHKRRKTSANETEDHLESCLICKVG EKSACSLESNL EGLAGVLEADLPNYKSKILRLLCTVARLLPEKLTYYTLVGL LNARNYNF GGEFVEAMIRQLKESLKANNYNEAVYLVRFLSDLVNCHVI AAPSMVAMFE NFVSVTQEEDVPQVRRDWYYAFLSSLPWVGKELYEKK DAEMDRIFANTE SYLKRRQKTHVPMQLQVWTADKPHPQEEYLDCLWAQIQKL KKDRWQERHIL RPLYAFDSILCEALQHNLPPTPPPHTEDSVYPMPRVIFRM FDYTDDPEG PVMPGSHSVERFVIEENLHCIKSHWKERKTCAAQLVSYP GKNKIPLNYH MEVIFAEFLQLPAPPHIDVMYTLLIELCKLQPGSLPQVLA QATEMLYM RLDTMNTTCVDRFINWFSSHLSNFQFRWSWEDWSDCLS QDPESPKPKFVR EVLEKCMRLSYHQRILDVMPPTFSALCPANPTCMKYGDES SNSLPGHSV ALCLAVAFKSKATNDEIFSILKDVNPQNQDDDDDEGFSFN PLKIEVFVQT LLHLAAKSFSHSFSAKAFHEVFKTLAESDEGKLHVLVRM FEVWRNHPQM IAVLVDKMIRTQVDCAAVANWIFSSSELSRDFTRLFVWEILH STIRKMNK HVLKIQKELEEAKEKLARQHKRRSDDDDRSSDRKDGVL EQIERLQEKVE

SAQSEQKNLFLVIFQRFIMLTEHLVRCETDGTSLTPWYK
NCIERLQQI
FLQHHQIIQQYMTLENLLFTAELDPHILAVFQQFCALQA

Predicted molecular weight 113 kDa including tags
Amino acids 1 to 790

Specifications

Our **Abpromise guarantee** covers the use of **ab114735** in the following tested applications.

The application notes include recommended starting dilutions; optimal dilutions/concentrations should be determined by the end user.

Applications ELISA
SDS-PAGE
Western blot

Form Liquid

Preparation and Storage

Stability and Storage Shipped on dry ice. Upon delivery aliquot and store at -80°C. Avoid freeze / thaw cycles.
pH: 8.00
Constituents: 0.3% Glutathione, 0.79% Tris HCl

General Info

Function Component of the cap-binding complex (CBC), which binds co-transcriptionally to the 5' cap of pre-mRNAs and is involved in various processes such as pre-mRNA splicing, translation regulation, nonsense-mediated mRNA decay, RNA-mediated gene silencing (RNAi) by microRNAs (miRNAs) and mRNA export. The CBC complex is involved in mRNA export from the nucleus via its interaction with THOC4/ALY, leading to the recruitment of the mRNA export machinery to the 5' end of mRNA and to mRNA export in a 5' to 3' direction through the nuclear pore. The CBC complex is also involved in mediating U snRNA and intronless mRNAs export from the nucleus. The CBC complex is essential for a pioneer round of mRNA translation, before steady state translation when the CBC complex is replaced by cytoplasmic cap-binding protein eIF4E. The pioneer round of mRNA translation mediated by the CBC complex plays a central role in nonsense-mediated mRNA decay (NMD), NMD only taking place in mRNAs bound to the CBC complex, but not on eIF4E-bound mRNAs. The CBC complex enhances NMD in mRNAs containing at least one exon-junction complex (EJC) via its interaction with UPF1, promoting the interaction between UPF1 and UPF2. The CBC complex is also involved in 'failsafe' NMD, which is independent of the EJC complex, while it does not participate in Staufen-mediated mRNA decay (SMD). During cell proliferation, the CBC complex is also involved in microRNAs (miRNAs) biogenesis via its interaction with SRRT/ARS2 and is required for miRNA-mediated RNA interference. The CBC complex also acts as a negative regulator of PARN, thereby acting as an inhibitor of mRNA deadenylation. In the CBC complex, NCBP1/CBP80 does not bind directly capped RNAs (m7GpppG-capped RNA) but is required to stabilize the movement of the N-terminal loop of NCBP2/CBP20 and lock the CBC into a high affinity cap-binding state with the cap structure.

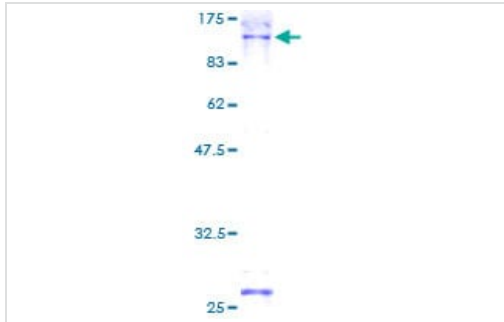
Sequence similarities Belongs to the NCBP1 family.

Contains 1 MIF4G domain.

Cellular localization

Nucleus. Cytoplasm. Localized in cytoplasmic mRNP granules containing untranslated mRNAs.

Images



12.5% SDS-PAGE showing ab114735 at approximately 112.64kDa.
Stained with Coomassie Blue.

SDS-PAGE - Recombinant Human CBP80 protein
(ab114735)

Please note: All products are "FOR RESEARCH USE ONLY. NOT FOR USE IN DIAGNOSTIC PROCEDURES"

Our Abpromise to you: Quality guaranteed and expert technical support

- Replacement or refund for products not performing as stated on the datasheet
- Valid for 12 months from date of delivery
- Response to your inquiry within 24 hours
- We provide support in Chinese, English, French, German, Japanese and Spanish
- Extensive multi-media technical resources to help you
- We investigate all quality concerns to ensure our products perform to the highest standards

If the product does not perform as described on this datasheet, we will offer a refund or replacement. For full details of the Abpromise, please visit <https://www.abcam.com/abpromise> or contact our technical team.

Terms and conditions

- Guarantee only valid for products bought direct from Abcam or one of our authorized distributors