

Product datasheet

Recombinant Human CD20 protein (His tag) ab229363

1 Image

Description

Product name	Recombinant Human CD20 protein (His tag)
Purity	> 90 % SDS-PAGE. Affinity purified
Endotoxin level	< 1.000 Eu/μg
Expression system	Baculovirus infected insect cells
Accession	<u>P11836</u>
Protein length	Protein fragment
Animal free	No
Nature	Recombinant
Species	Human
Sequence	ADPGVENEWKRTCSRPKSNVLLSAEEKKEQTIEIKEEVV GLTETSSQP KNEEDIEIIPIQEEEEEEETETNFPEPPQDQESSPIENDSSPH HHHHH
Predicted molecular weight	11 kDa including tags
Amino acids	210 to 297
Tags	His tag C-Terminus
Additional sequence information	Product corresponds to the cytoplasmic domain. NP_068769

Specifications

Our **Abpromise guarantee** covers the use of **ab229363** in the following tested applications.

The application notes include recommended starting dilutions; optimal dilutions/concentrations should be determined by the end user.

Applications	SDS-PAGE
Form	Liquid

Preparation and Storage

Stability and Storage	Shipped at 4°C. Store at +4°C short term (1-2 weeks). Upon delivery aliquot. Store at -20°C or -80°C. Avoid freeze / thaw cycle.
------------------------------	--

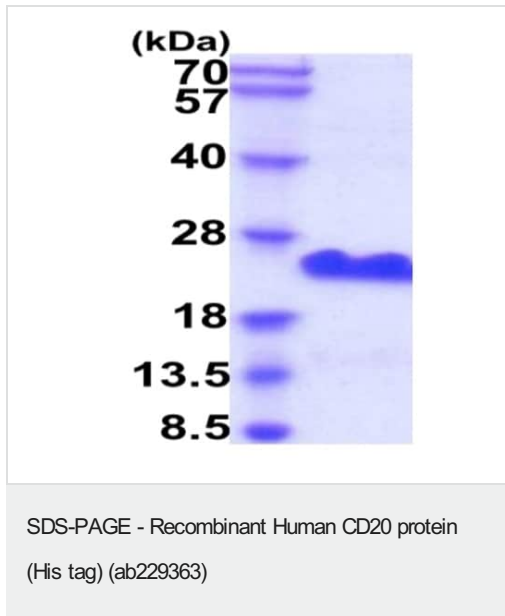
pH: 7.40

Constituents: PBS, 10% Glycerol (glycerin, glycerine)

General Info

Function	This protein may be involved in the regulation of B-cell activation and proliferation.
Tissue specificity	Expressed on B-cells.
Involvement in disease	Defects in MS4A1 are the cause of immunodeficiency common variable type 5 (CVID5) [MIM:613495]; also called antibody deficiency due to CD20 defect. CVID5 is a primary immunodeficiency characterized by antibody deficiency, hypogammaglobulinemia, recurrent bacterial infections and an inability to mount an antibody response to antigen. The defect results from a failure of B-cell differentiation and impaired secretion of immunoglobulins; the numbers of circulating B cells is usually in the normal range, but can be low.
Sequence similarities	Belongs to the MS4A family.
Post-translational modifications	Phosphorylated. Might be functionally regulated by protein kinase(s).
Cellular localization	Membrane.

Images



15% SDS-PAGE analysis of 3 µg recombinant human CD20 protein (His tag) (ab229363).

Please note: All products are "FOR RESEARCH USE ONLY. NOT FOR USE IN DIAGNOSTIC PROCEDURES"

Our Abpromise to you: Quality guaranteed and expert technical support

- Replacement or refund for products not performing as stated on the datasheet
- Valid for 12 months from date of delivery
- Response to your inquiry within 24 hours

- We provide support in Chinese, English, French, German, Japanese and Spanish
- Extensive multi-media technical resources to help you
- We investigate all quality concerns to ensure our products perform to the highest standards

If the product does not perform as described on this datasheet, we will offer a refund or replacement. For full details of the Abpromise, please visit <https://www.abcam.com/abpromise> or contact our technical team.

Terms and conditions

- Guarantee only valid for products bought direct from Abcam or one of our authorized distributors