

Recombinant Human CD62L protein (Fc Chimera) ab83824

2 Images

Description

Product name Recombinant Human CD62L protein (Fc Chimera)
Purity > 95 % SDS-PAGE.

Expression system HEK 293 cells

Accession P14151

Protein length Protein fragment

Animal free No

Nature Recombinant

Species Human

Sequence Theoretical Sequence:
WTYHYSEKPMNWQRARRFCRDNYTDLVAIQNKAEIEYLEK
TLPFSRSY
YWIGIRKIGGWTWVGTKSLTEEAENWGDGEPNNKKNKE
DCVEMKRN
KDAGKWNDDACHKLKAALCYTASCQPWSCSGHGECVEII
NNYTCNCDVGY
YGPQCQFVIQCEPLEAPELGTMDCTHPLGNFSFSSQCAF
SCSEGTNLTGI
EETTCGPFGNWSSPEPTCQVIQCEPLSAPDLGIMNC SHP
LASFSFTSACT
FICSEGTELIGKKKTICESSGWSNPSPICQKLDKSF SMIKE
GDWIPKVD
KKVEPKSCDKTHTCPPCPAPELLGGPSVFLFPPKPKDTL
MISRTPEVTCV
VVDVSHEDPEVKFNWYVDGVEVHNAKTKPREEQYNSTY
RVVSVLTVLHQD
WLNGKEYKCRVSNKALPAPIEKTISKAKGQPREPQVYTL P
PSRDELTKNQ
VSLTCLVKGFYPSDIAVEWESNGQPENNYKTTTPVLDSD
GSFFLYSKLTV
DKSRWQQGNVFSCSVMHEALHNHYTQKSLSLSPGK

Amino acids 1 to 343

Additional sequence information Fused with the Fc region of Human IgG1 at the C-terminus.

Specifications

Our **Abpromise guarantee** covers the use of **ab83824** in the following tested applications.

The application notes include recommended starting dilutions; optimal dilutions/concentrations should be determined by the end user.

Applications SDS-PAGE

Form Lyophilized

Preparation and Storage

Stability and Storage Shipped at 4°C. Store at +4°C.

Constituents: PBS, 10% Trehalose, 1% Human serum albumin

Reconstitution It is recommended that 0.5 ml of sterile phosphate-buffered saline be added to the vial. Following reconstitution short-term storage at 4°C is recommended, and longer-term storage of aliquots at -18 to -20°C. Repeated freeze thawing is not recommended.

General Info

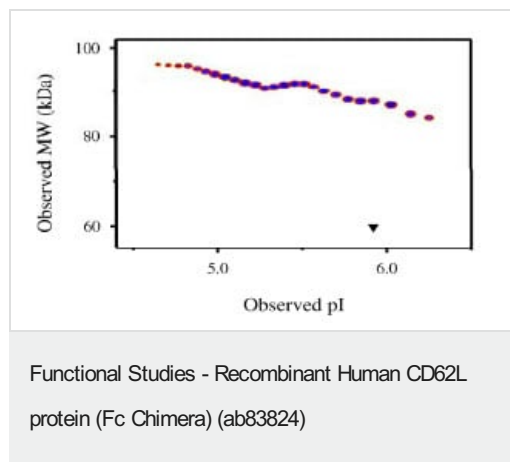
Function Cell surface adhesion protein. Mediates the adherence of lymphocytes to endothelial cells of high endothelial venules in peripheral lymph nodes. Promotes initial tethering and rolling of leukocytes in endothelia.

Tissue specificity Expressed in B cell lines and T lymphocytes.

Sequence similarities Belongs to the selectin/LECAM family.
Contains 1 C-type lectin domain.
Contains 1 EGF-like domain.
Contains 2 Sushi (CCP/SCR) domains.

Cellular localization Membrane.

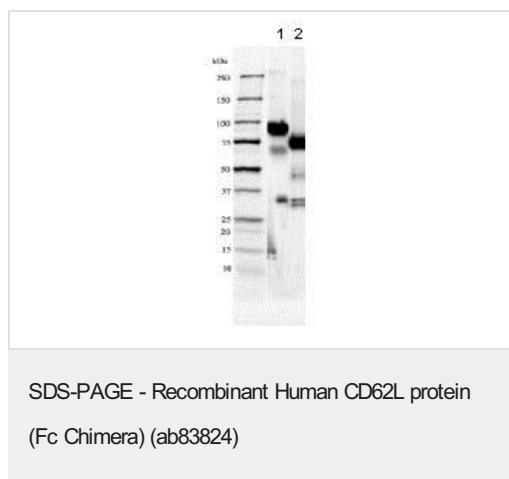
Images



Densitometry of protein isoforms visualised by 2-DE.

The densitometry scan demonstrates the purified Human cell expressed protein exists in multiple isoforms, which differ according to their level of post-translational modification.

The triangle indicates the theoretical MW and pI of the protein.



1D SDS-PAGE of ab83824 before and after treatment with glycosidases to remove oligosaccharides.

Lane 1: ab83824

Lane 2: ab83824 treated with PNGase F to remove potential N-linked glycans

10 µg protein loaded per lane; Deep Purple™ stained.

Drop in MW after treatment with PNGase F indicates presence of N-linked glycans.

Please note: All products are "FOR RESEARCH USE ONLY. NOT FOR USE IN DIAGNOSTIC PROCEDURES"

Our Abpromise to you: Quality guaranteed and expert technical support

- Replacement or refund for products not performing as stated on the datasheet
- Valid for 12 months from date of delivery
- Response to your inquiry within 24 hours
- We provide support in Chinese, English, French, German, Japanese and Spanish
- Extensive multi-media technical resources to help you
- We investigate all quality concerns to ensure our products perform to the highest standards

If the product does not perform as described on this datasheet, we will offer a refund or replacement. For full details of the Abpromise, please visit <https://www.abcam.com/abpromise> or contact our technical team.

Terms and conditions

- Guarantee only valid for products bought direct from Abcam or one of our authorized distributors