

Product datasheet

Recombinant human CD80 protein ab180050

[4 Images](#)

Description

Product name	Recombinant human CD80 protein
Biological activity	Measured by its ability to induce IL 2 secretion by Jurkat human acute T cell leukemia cells. The ED 50 for this effect is typically 0.01 - 0.1 µg/mL in the presence of PHA
Purity	> 95 % SDS-PAGE. ab180050 purity was determined by reduced SDS-PAGE and staining overnight with Coomassie Blue.
Endotoxin level	< 1.000 Eu/µg
Expression system	HEK 293 cells
Accession	<u>P33681</u>
Protein length	Protein fragment
Animal free	No
Nature	Recombinant
Species	Human
Sequence	VIHVTKEVKEVATLSCGHNVSVVEELAQTRMWQKEKKMVL TMMSGDMNIW PEYKNRTIFDITNNLSMILALRPSDEGTYECVVLKYEKDAFK REHLAEV TLSVKADFPTPSISDFEIPTSNIRRIICSTSGGFPEPHLSWLE NGEELNA INTTVSQDPETELYAVSSKLDFNMTTNHSMCLIKYGHRLRV NQTFNWNTT KQEHFPDN
Predicted molecular weight	25 kDa including tags
Amino acids	35 to 242
Tags	His tag C-Terminus
Additional sequence information	Extracellular domain. (NP_005182.1)

Specifications

Our **Abpromise guarantee** covers the use of **ab180050** in the following tested applications.

The application notes include recommended starting dilutions; optimal dilutions/concentrations should be determined by the end user.

Applications Functional Studies

SDS-PAGE

Form

Lyophilized

Preparation and Storage

Stability and Storage

Shipped at 4°C. Store at 4°C prior to reconstitution. Store at -20°C or -80°C. Avoid freeze / thaw cycle.

pH: 7.40

Constituents: 95% PBS, 5% Trehalose

The formulation is lot specific. Please contact our Technical Support team for details

This product is an active protein and may elicit a biological response in vivo, handle with caution.

Reconstitution

This information is lot specific. Please contact our Technical Support team for details

General Info

Function

Involved in the costimulatory signal essential for T-lymphocyte activation. T-cell proliferation and cytokine production is induced by the binding of CD28 or CTLA-4 to this receptor.

Tissue specificity

Expressed on activated B-cells, macrophages and dendritic cells.

Sequence similarities

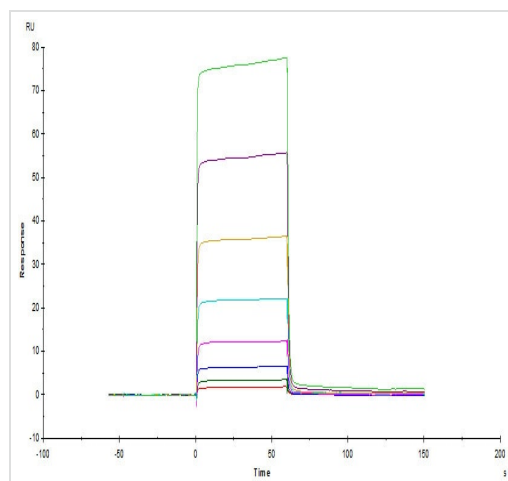
Contains 1 Ig-like C2-type (immunoglobulin-like) domain.

Contains 1 Ig-like V-type (immunoglobulin-like) domain.

Cellular localization

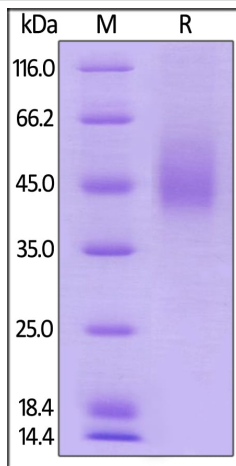
Membrane.

Images



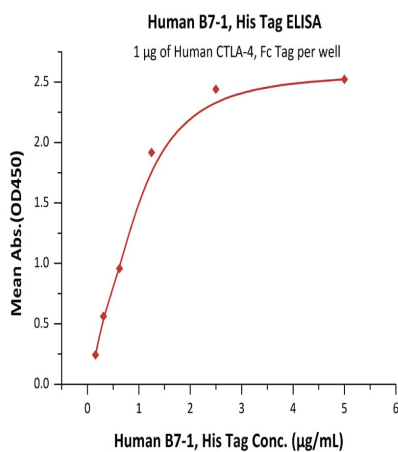
Immobilized Human / Cynomolgus / Rhesus macaque CD28, Fc Tag (HPLC-verified) on CM5 Chip can bind Human B7-1, His Tag with an affinity constant of 5.29 μM as determined in a SPR assay (Biacore T200).

Functional Studies - Recombinant human CD80 protein (ab180050)



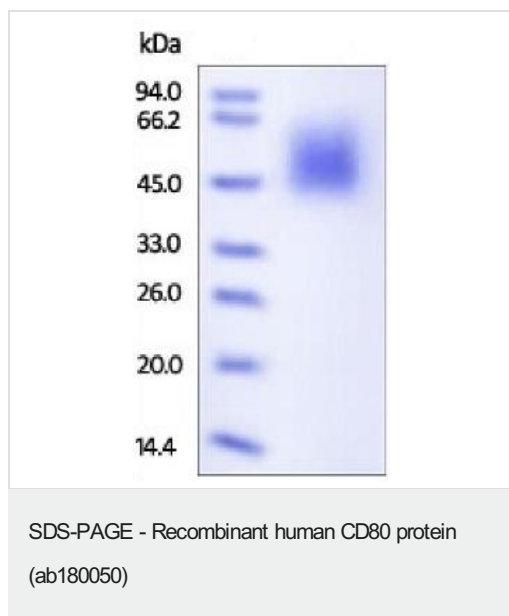
Human B7-1, His Tag on SDS-PAGE under reducing (R) condition. The gel was stained overnight with Coomassie Blue. The purity of the protein is greater than 90%.

SDS-PAGE - Recombinant human CD80 protein (ab180050)



Immobilized Human CTLA-4, Fc Tag at 10 µg/mL (100 µL/well) can bind Human B7-1, His Tag with a linear range of 0.156-1.25 µg/mL.

Functional Studies - Recombinant human CD80 protein (ab180050)



SDS-PAGE analysis of ab180050 in reducing conditions. Gel stained overnight with Coomassie Blue. Protein migrates as 45 - 75 kDa due to different glycosylation.

Please note: All products are "FOR RESEARCH USE ONLY. NOT FOR USE IN DIAGNOSTIC PROCEDURES"

Our Abpromise to you: Quality guaranteed and expert technical support

- Replacement or refund for products not performing as stated on the datasheet
- Valid for 12 months from date of delivery
- Response to your inquiry within 24 hours
- We provide support in Chinese, English, French, German, Japanese and Spanish
- Extensive multi-media technical resources to help you
- We investigate all quality concerns to ensure our products perform to the highest standards

If the product does not perform as described on this datasheet, we will offer a refund or replacement. For full details of the Abpromise, please visit <https://www.abcam.com/abpromise> or contact our technical team.

Terms and conditions

- Guarantee only valid for products bought direct from Abcam or one of our authorized distributors