

## Product datasheet

# Recombinant human Cdc25C protein ab105911

[5 Images](#)

### Description

---

<b>Product name</b>	Recombinant human Cdc25C protein
<b>Biological activity</b>	The Specific activity of ab105911 was determined to be 22 nmol/min/mg.
<b>Purity</b>	> 70 % SDS-PAGE. Purity was determined to be >70% by densitometry. Affinity purified.
<b>Expression system</b>	Baculovirus infected Sf9 cells
<b>Accession</b>	<b><u>P30307</u></b>
<b>Protein length</b>	Full length protein
<b>Animal free</b>	No
<b>Nature</b>	Recombinant
<b>Species</b>	Human
<b>Predicted molecular weight</b>	84 kDa including tags
<b>Amino acids</b>	1 to 473
<b>Tags</b>	GST tag N-Terminus

### Specifications

---

Our **Abpromise guarantee** covers the use of **ab105911** in the following tested applications.

The application notes include recommended starting dilutions; optimal dilutions/concentrations should be determined by the end user.

<b>Applications</b>	SDS-PAGE Functional Studies
<b>Form</b>	Liquid

### Preparation and Storage

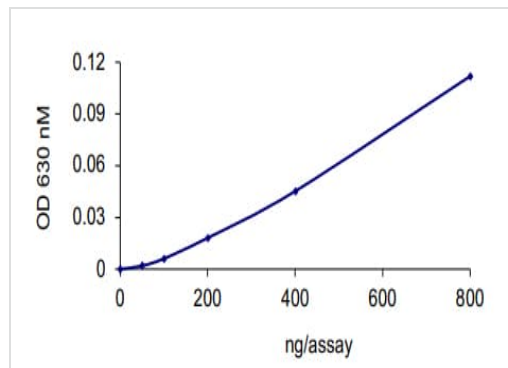
---

<b>Stability and Storage</b>	Shipped on dry ice. Upon delivery aliquot and store at -80°C. Avoid freeze / thaw cycles. pH: 7.50 Constituents: 0.307% Glutathione, 0.00174% PMSF, 0.00385% DTT, 0.79% Tris HCl, 0.00292% EDTA, 25% Glycerol (glycerin, glycerine), 0.87% Sodium chloride This product is an active protein and may elicit a biological response in vivo, handle with caution.
------------------------------	--

## General Info

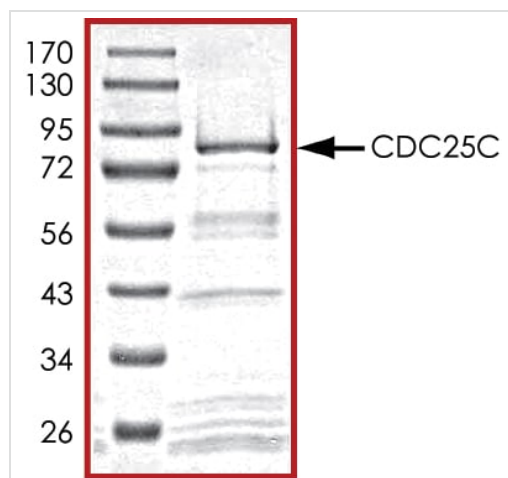
<b>Function</b>	Functions as a dosage-dependent inducer in mitotic control. It is a tyrosine protein phosphatase required for progression of the cell cycle. It directly dephosphorylates CDK1 and activate its kinase activity.
<b>Sequence similarities</b>	Belongs to the MPI phosphatase family. Contains 1 rhodanese domain.
<b>Developmental stage</b>	Expressed predominantly in G2 phase.
<b>Post-translational modifications</b>	Phosphorylated by CHK1 on Ser-216. This phosphorylation creates a binding site for 14-3-3 protein and inhibits the phosphatase. Phosphorylated by PLK4.
<b>Cellular localization</b>	Nucleus.

## Images



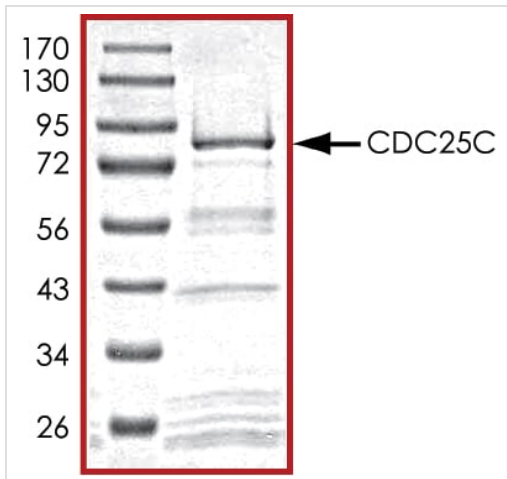
Functional Studies - Recombinant human Cdc25C protein (ab105911)

The specific activity of Cdc25C (ab105911) was determined to be 22 phosphate released/min/mg as per activity assay protocol



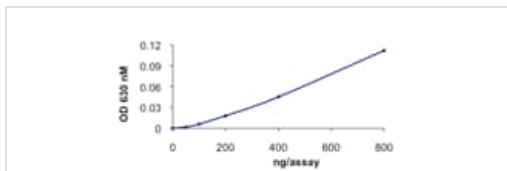
SDS-PAGE - Recombinant human Cdc25C protein (ab105911)

SDS PAGE analysis of ab105911



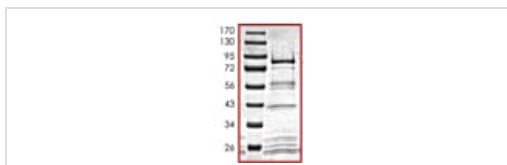
SDS PAGE analysis of ab105911

SDS-PAGE - Recombinant human Cdc25C protein (ab105911)



Phosphatase Assay demonstrating specific activity of ab105911.

Functional Studies - Recombinant human Cdc25C protein (ab105911)



SDS-PAGE showing ab105911 at approximately 84kDa.

SDS-PAGE - Recombinant human Cdc25C protein (ab105911)

**Please note:** All products are "FOR RESEARCH USE ONLY. NOT FOR USE IN DIAGNOSTIC PROCEDURES"

### Our Abpromise to you: Quality guaranteed and expert technical support

- Replacement or refund for products not performing as stated on the datasheet
- Valid for 12 months from date of delivery
- Response to your inquiry within 24 hours
- We provide support in Chinese, English, French, German, Japanese and Spanish
- Extensive multi-media technical resources to help you
- We investigate all quality concerns to ensure our products perform to the highest standards

If the product does not perform as described on this datasheet, we will offer a refund or replacement. For full details of the Abpromise, please visit <https://www.abcam.com/abpromise> or contact our technical team.

## Terms and conditions

---

- Guarantee only valid for products bought direct from Abcam or one of our authorized distributors