

Product datasheet

Recombinant human CDC42 binding protein kinase alpha ab59979

[4 Images](#)

Description

Product name	Recombinant human CDC42 binding protein kinase alpha
Biological activity	Specific activity: 101nmol/min/mg.
Purity	> 75 % Densitometry. Purified using an N-terminal enzyme tag. Affinity purified.
Expression system	Baculovirus infected Sf9 cells
Protein length	Protein fragment
Animal free	No
Nature	Recombinant
Species	Human
Amino acids	1 to 473

Specifications

Our **Abpromise guarantee** covers the use of **ab59979** in the following tested applications.

The application notes include recommended starting dilutions; optimal dilutions/concentrations should be determined by the end user.

Applications	Functional Studies SDS-PAGE
Form	Liquid
Additional notes	<u>ab204880</u> (RPS6 peptide) can be utilized as a substrate for assessing kinase activity

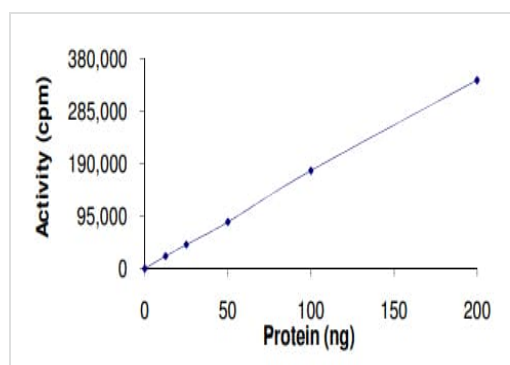
Preparation and Storage

Stability and Storage	Shipped on dry ice. Upon delivery aliquot and store at -80°C. Avoid freeze / thaw cycles. pH: 7.50 Constituents: 0.0038% EGTA, 0.00174% PMSF, 0.00385% DTT, 0.79% Tris HCl, 0.00292% EDTA, 25% Glycerol (glycerin, glycerine), 0.87% Sodium chloride This product is an active protein and may elicit a biological response in vivo, handle with caution.
------------------------------	--

General Info

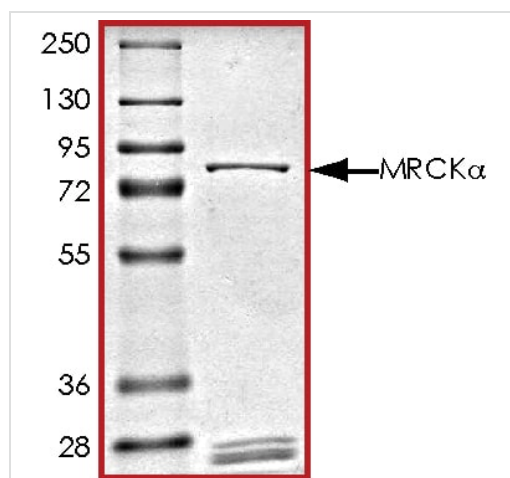
Function	May act as a downstream effector of CDC42 in cytoskeletal reorganization. Contributes to the actomyosin contractility required for cell invasion, through the regulation of MYPT1 and thus MLC2 phosphorylation.
Tissue specificity	Abundant in the heart, brain, skeletal muscle, kidney, and pancreas, with little or no expression in the lung and liver.
Sequence similarities	Belongs to the protein kinase superfamily. AGC Ser/Thr protein kinase family. DMPK subfamily. Contains 1 AGC-kinase C-terminal domain. Contains 1 CNH domain. Contains 1 CRIB domain. Contains 1 PH domain. Contains 1 phorbol-ester/DAG-type zinc finger. Contains 1 protein kinase domain.
Cellular localization	Cytoplasm. Displays a dispersed punctate distribution and concentrates along the cell periphery, especially at the leading edge and cell-cell junction. This concentration is PH-domain dependent.

Images



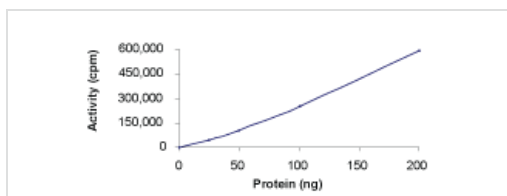
The specific activity of CDC42 binding protein kinase alpha (ab59979) was determined to be 86 nmol/min/mg as per activity assay protocol

Functional Studies - Recombinant human CDC42 binding protein kinase alpha (ab59979)



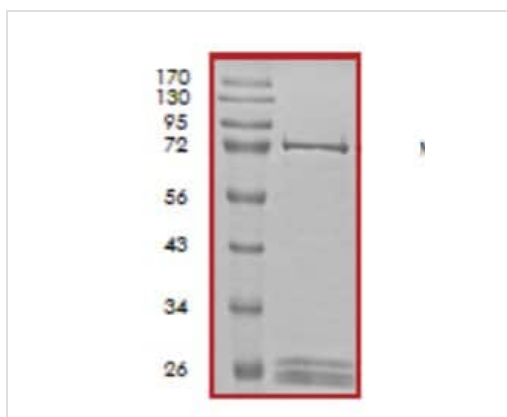
SDS PAGE analysis of ab59979

SDS-PAGE - Recombinant human CDC42 binding protein kinase alpha (ab59979)



Sample Kinase Activity Plot.

Functional Studies - Recombinant human CDC42
binding protein kinase alpha (ab59979)



ab59979 on SDS-PAGE.

SDS-PAGE - Recombinant human CDC42 binding
protein kinase alpha (ab59979)

Please note: All products are "FOR RESEARCH USE ONLY. NOT FOR USE IN DIAGNOSTIC PROCEDURES"

Our Abpromise to you: Quality guaranteed and expert technical support

- Replacement or refund for products not performing as stated on the datasheet
- Valid for 12 months from date of delivery
- Response to your inquiry within 24 hours
- We provide support in Chinese, English, French, German, Japanese and Spanish
- Extensive multi-media technical resources to help you
- We investigate all quality concerns to ensure our products perform to the highest standards

If the product does not perform as described on this datasheet, we will offer a refund or replacement. For full details of the Abpromise, please visit <https://www.abcam.com/abpromise> or contact our technical team.

Terms and conditions

- Guarantee only valid for products bought direct from Abcam or one of our authorized distributors