

Product datasheet

Recombinant Human CDC42 protein ab87713

[2 Images](#)

Description

Product name	Recombinant Human CDC42 protein
Purity	> 95 % SDS-PAGE. ab87713 is purified using conventional chromatography techniques. Endotoxin: < 1.0 EU per 1 microgram of protein (determined by LAL method).
Expression system	Escherichia coli
Protein length	Full length protein
Animal free	No
Nature	Recombinant
Species	Human
Sequence	MASMTGGQQM GRGSHMQTIK CVVVG DGAVG KTCLLSYTT NKFPSEYVPT VFDNYAVTVM IGGEPYTLGL FDTAGQEDYD RLRPLSYPQT DVFLVCFSV SPSSFENVKE KVVPEITHHC PKTPFLLVGT QIDLRDDPST IEKLAKNKQK PITPETA EKL ARDLKAVKYV ECSALTQKGL KNVFDEAILA ALEPPEPKKS RRC

Specifications

Our **Abpromise guarantee** covers the use of **ab87713** in the following tested applications.

The application notes include recommended starting dilutions; optimal dilutions/concentrations should be determined by the end user.

Applications	SDS-PAGE Western blot
Form	Liquid

Preparation and Storage

Stability and Storage	Shipped at 4°C. Upon delivery aliquot and store at -20°C. Avoid repeated freeze / thaw cycles. pH: 8.00 Constituents: 0.0154% DTT, 0.316% Tris HCl, 0.0584% EDTA, 10% Glycerol (glycerin, glycerine)
------------------------------	--

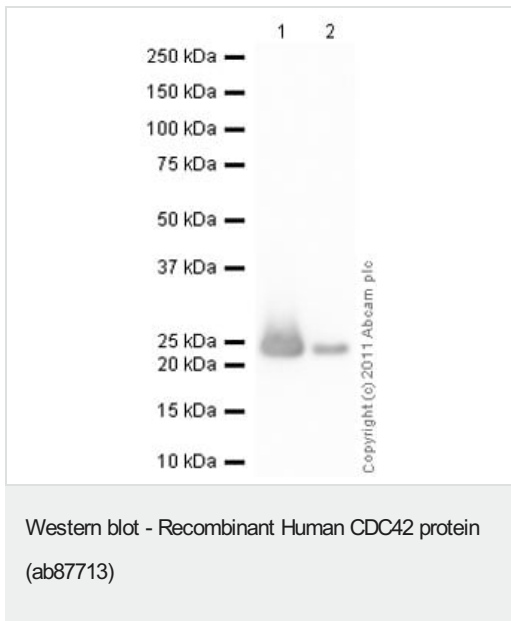
General Info

Function	Plasma membrane-associated small GTPase which cycles between an active GTP-bound and an inactive GDP-bound state. In active state binds to a variety of effector proteins to regulate cellular responses. Involved in epithelial cell polarization processes. Causes the formation of thin, actin-rich surface projections called filopodia.
Sequence similarities	Belongs to the small GTPase superfamily. Rho family. CDC42 subfamily.
Post-translational modifications	AMPylation at Tyr-32 and Thr-35 are mediated by bacterial enzymes in case of infection by H.somnus and V.parahaemolyticus, respectively. AMPylation occurs in the effector region and leads to inactivation of the GTPase activity by preventing the interaction with downstream effectors, thereby inhibiting actin assembly in infected cells. It is unclear whether some human enzyme mediates AMPylation; FICD has such ability in vitro but additional experiments remain to be done to confirm results in vivo.
Cellular localization	Cell membrane.

Images



15% SDS-PAGE showing ab87713 at approximately 22.4kDa (3µg).



All lanes : Anti-CDC42 antibody ([ab64533](#)) at 1 µg/ml

Lane 1 : Recombinant Human CDC42 protein (ab87713) at 0.1 µg

Lane 2 : Recombinant Human CDC42 protein (ab87713) at 0.01 µg

Secondary

All lanes : Goat Anti-Rabbit IgG H&L (HRP) preadsorbed ([ab97080](#)) at 1/5000 dilution

Developed using the ECL technique.

Performed under reducing conditions.

Exposure time: 1 minute

Please note: All products are "FOR RESEARCH USE ONLY. NOT FOR USE IN DIAGNOSTIC PROCEDURES"

Our Abpromise to you: Quality guaranteed and expert technical support

- Replacement or refund for products not performing as stated on the datasheet
- Valid for 12 months from date of delivery
- Response to your inquiry within 24 hours

- We provide support in Chinese, English, French, German, Japanese and Spanish
- Extensive multi-media technical resources to help you
- We investigate all quality concerns to ensure our products perform to the highest standards

If the product does not perform as described on this datasheet, we will offer a refund or replacement. For full details of the Abpromise, please visit <https://www.abcam.com/abpromise> or contact our technical team.

Terms and conditions

- Guarantee only valid for products bought direct from Abcam or one of our authorized distributors