

Product datasheet

Recombinant Human CDKL2 protein ab167948

[1 Image](#)

Description

Product name Recombinant Human CDKL2 protein

Purity > 80 % Densitometry.
Affinity purified.

Expression system Baculovirus infected Sf9 cells

Accession [Q92772](#)

Protein length Full length protein

Animal free No

Nature Recombinant

Species Human

Sequence

```
MEKYENLGLVGEESYGMVMKCRNKDTGRVAIKKFLESD
DDKMVKKIAMR
EIKLLKQLRHENLVNLEEVCKKKKRWYLVFEFVDHTILDDL
ELFPNGLDY
QVVQKYLFIINGIGFCHSHNIIHRDIKPENILVSQSGVVKLC
DFGFART
LAAPGEVYTDYVATRWYRAPELLVGDVKYGKAVDVWAIG
CLVTEMFMGEP
LFPGSDSIDQLYHIMMCLGNLIPRHQELFNKNPVFAGVRLP
EIKEREPL
RRYPKLSEVIDLAKKCLHIDPKRPFCAELLHHDFFQMD
GFAERFSQEL
QLKVQKDARNVSLSKKSQNRKKEKEKDDSLVEERKTLVV
QDTNADPKIKD
YKLFKIKGSKIDGEKAEKGNRASNASCLHDSRTSHNKIVPS
TSLKDCSNV
SVDHTRNPSVAIPPLTHNLSAVAPSINSGMGTETIPIQGYRV
DEKTKKCS
IPFVKPNRHSPSGYNINVTTLVSGPPLSDDSGADLPQMEH
QH
```

Predicted molecular weight 81 kDa including tags

Amino acids 1 to 493

Tags proprietary tag N-Terminus

Specifications

Our **Abpromise guarantee** covers the use of **ab167948** in the following tested applications.

The application notes include recommended starting dilutions; optimal dilutions/concentrations should be determined by the end user.

Applications	Western blot
Form	Liquid

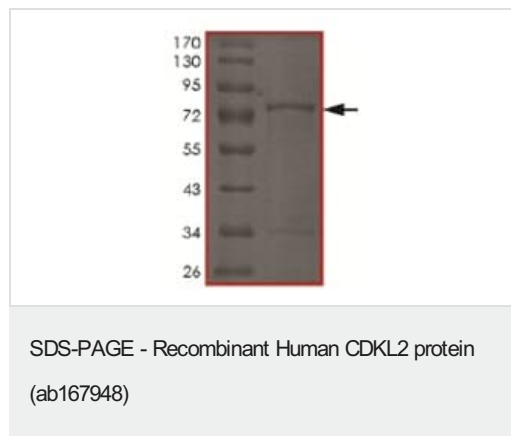
Preparation and Storage

Stability and Storage	Shipped on dry ice. Upon delivery aliquot and store at -80°C. Avoid freeze / thaw cycles. pH: 7.50 Constituents: 0.31% Glutathione, 0.002% PMSF, 0.004% DTT, 0.79% Tris HCl, 0.004% EDTA, 25% Glycerol (glycerin, glycerine), 0.29% Sodium chloride
------------------------------	---

General Info

Tissue specificity	Expressed in testis and kidney, and at lower level in brain and lung.
Sequence similarities	Belongs to the protein kinase superfamily. CMGC Ser/Thr protein kinase family. CDC2/CDKX subfamily. Contains 1 protein kinase domain.
Domain	The [NKR]KIAxRE motif seems to be a cyclin-binding region.
Cellular localization	Cytoplasm. Nucleus.

Images



SDS-PAGE analysis of ab167948.

Please note: All products are "FOR RESEARCH USE ONLY. NOT FOR USE IN DIAGNOSTIC PROCEDURES"

Our Abpromise to you: Quality guaranteed and expert technical support

- Replacement or refund for products not performing as stated on the datasheet
- Valid for 12 months from date of delivery
- Response to your inquiry within 24 hours

- We provide support in Chinese, English, French, German, Japanese and Spanish
- Extensive multi-media technical resources to help you
- We investigate all quality concerns to ensure our products perform to the highest standards

If the product does not perform as described on this datasheet, we will offer a refund or replacement. For full details of the Abpromise, please visit <https://www.abcam.com/abpromise> or contact our technical team.

Terms and conditions

- Guarantee only valid for products bought direct from Abcam or one of our authorized distributors