

Product datasheet

Recombinant Human Choline kinase alpha protein
ab114521

1 Image

Description

Product name	Recombinant Human Choline kinase alpha protein
Expression system	Wheat germ
Accession	<u>P35790</u>
Protein length	Full length protein
Animal free	No
Nature	Recombinant
Species	Human
Sequence	MKTKFCTGGEAEPSPLGLLLSCGSGSAAPAPGVGQQRD AASDLESKQLGG QQPPLALPPPPPLPLPLPQPPPPQPPADEQPEPRTRR RAYLWCKEFLP GAWRGLREDEFHISVIRGGLSNMLFQCSPDTTATLGDEP RKVLLRLYGA ILQMRSCNKEGSEQAQKENEFQGAEAMVLESVMFAILAE RSLGPKLYGIF PQGRLEQFIPSRRLDTEELSLPDISAEIAEKMATFHGMKMP FNKEPKWLF GTMEKYLKEVLRKFTEESRIKKLHKLLSYNLPLELENLRSL LESTPSPV VFCHNDCQEGNILLLEGRENSEKQKLMLIDFEYSSYNYRG FDIGNHFCEW MYDYSYEKYPFFRANIRKYPTKKQQLHFISYLPAFQNDFE NLSTEEKSI IKEEMLLEVNRFALASHFLWGLWSIVQAKISSIEFGYMDYA QARFDAYFH QKRKLGV
Predicted molecular weight	76 kDa including tags
Amino acids	1 to 457

Specifications

Our **Abpromise guarantee** covers the use of **ab114521** in the following tested applications.

The application notes include recommended starting dilutions; optimal dilutions/concentrations should be determined by the end user.

Applications	ELISA
	SDS-PAGE
	Western blot
Form	Liquid
Additional notes	

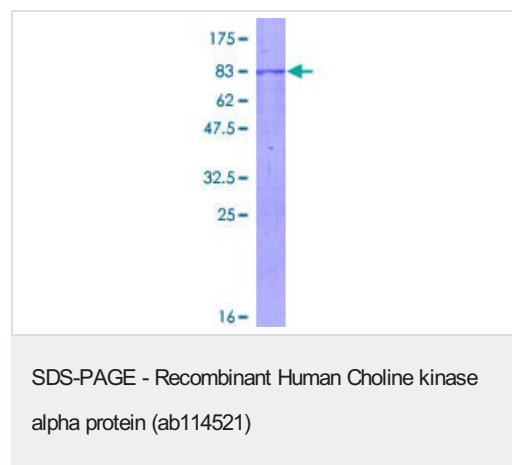
Preparation and Storage

Stability and Storage	Shipped on dry ice. Upon delivery aliquot and store at -80°C. Avoid freeze / thaw cycles.
	pH: 8.00
	Constituents: 0.3% Glutathione, 0.79% Tris HCl

General Info

Relevance	The dominant pathway for biosynthesis of phosphatidylcholine occurs through the CDP-choline pathway. Choline kinase alpha (CHK) is the first enzyme in the pathway and may thereby play an upstream regulatory role in lipid transport and metabolism. CHK additionally catalyzes phosphorylation of ethanolamine.
Cellular localization	Cytoplasmic

Images



12.5% SDS-PAGE analysis of Human Choline kinase alpha protein (ab114521). Stained with Coomassie Blue.

Please note: All products are "FOR RESEARCH USE ONLY. NOT FOR USE IN DIAGNOSTIC PROCEDURES"

Our Abpromise to you: Quality guaranteed and expert technical support

- Replacement or refund for products not performing as stated on the datasheet
- Valid for 12 months from date of delivery
- Response to your inquiry within 24 hours

- We provide support in Chinese, English, French, German, Japanese and Spanish
- Extensive multi-media technical resources to help you
- We investigate all quality concerns to ensure our products perform to the highest standards

If the product does not perform as described on this datasheet, we will offer a refund or replacement. For full details of the Abpromise, please visit <https://www.abcam.com/abpromise> or contact our technical team.

Terms and conditions

- Guarantee only valid for products bought direct from Abcam or one of our authorized distributors