

## Product datasheet

# Recombinant Human Chromogranin A protein ab85486

[2 References](#) [3 Images](#)

### Description

---

**Product name** Recombinant Human Chromogranin A protein

**Purity** > 80 % SDS-PAGE.

**Expression system** Escherichia coli

**Accession** **P10645**

**Protein length** Full length protein

**Animal free** No

**Nature** Recombinant

**Species** Human

**Sequence**

**MRGSHHHHHH GMASMTGGQQ MGRDLYDDDD**  
**KDRWGS**HMLP VNSPMNGD EVMKCEVI  
SDTLSPSPM PVSQECFETL RGDERILSIL  
RHQNLKELQ DLALQGAKER AHQKKHSGF  
EDELSEVLEN QSSQAEKEA VEEPSSKDVM  
EKREDSKEAE KSGEATDGAR PQALPEPMQE  
SKAEGNNQAP GEEEEEEEEEA TNTHPPASLP  
SQKYPGPQAE GDSEGLSQGL VDREKGLSAE  
PGWQAKREEE EEEEEAEAG EEAVPEEEGP  
TVVLNPHPSL GYKEIRKGES RSEALVDGA  
GKPGAEAAQD PEGKGEQEHS QQKEEEEEEMA  
VVPQGLFRGG KSGELEQEEE RLSKEWEDSK  
RWSKMDQLAK ELTAEKRLEG QEEEEENRDS  
SMKLSFRARA YGFRGPGPQL RRGWRPSSRE  
DSLEAGLPLQ VRGYPEEKKE EEGSANRRPE  
DQELESLSAI EAELEKVAHQ LQALRRG

**Predicted molecular weight** 51 kDa

**Amino acids** 19 to 457

**Tags** His tag N-Terminus

### Specifications

---

Our **Abpromise guarantee** covers the use of **ab85486** in the following tested applications.

The application notes include recommended starting dilutions; optimal dilutions/concentrations should be determined by the end user.

<b>Applications</b>	Western blot SDS-PAGE
<b>Form</b>	Liquid
<b>Additional notes</b>	Concentration (determined by Bradford assay)

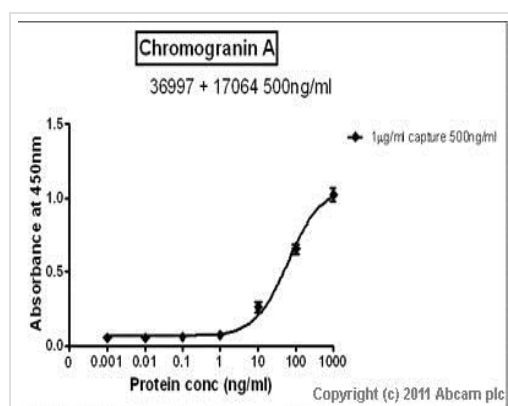
## Preparation and Storage

<b>Stability and Storage</b>	Shipped at 4°C. Upon delivery aliquot and store at -20°C or -80°C. Avoid repeated freeze / thaw cycles.  pH: 7.5 Constituents: 0.39% MES, 0.00174% PMSF, 0.0584% EDTA, 10% Glycerol
------------------------------	--

## General Info

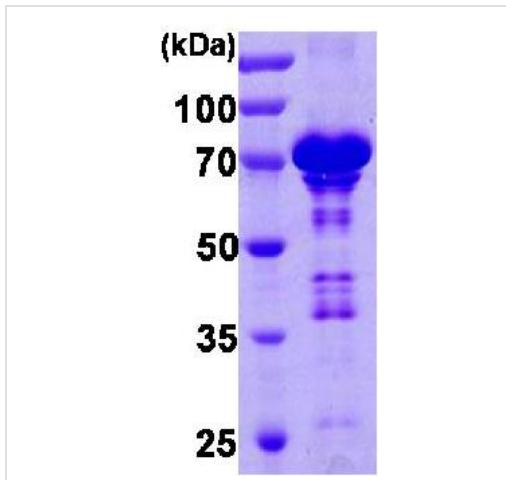
<b>Function</b>	Pancreastatin strongly inhibits glucose induced insulin release from the pancreas.
<b>Sequence similarities</b>	Belongs to the chromogranin/secretogranin protein family.
<b>Post-translational modifications</b>	Sulfated on tyrosine residues and/or contains sulfated glycans. O-glycosylated with core 1 or possibly core 8 glycans.
<b>Cellular localization</b>	Secreted. Neuroendocrine and endocrine secretory granules.

## Images



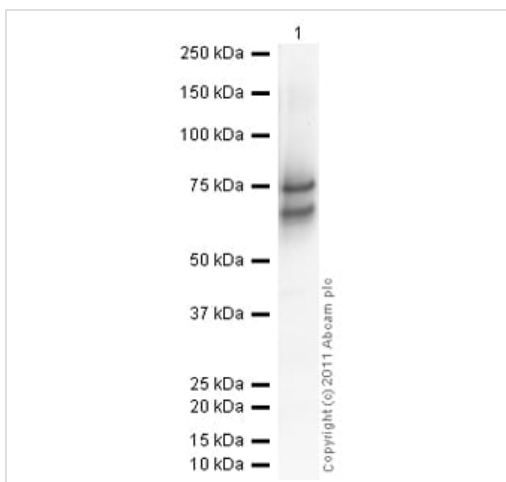
Standard curve for Chromogranin A (Analyte: ab85486); dilution range 1pg/ml to 1µg/ml using Capture Antibody **ab36997** at 1µg/ml and Detector Antibody **ab17064** at 0.5µg/ml. Concentration of **ab17064** may vary from lot to lot; please use this curve as guideline.

Sandwich ELISA - Recombinant Human  
Chromogranin A protein (ab85486)



12% SDS-PAGE analysis of 3µg of ab85486

SDS-PAGE - Recombinant Human Chromogranin A protein (ab85486)



Chromogranin A is easily fragmented and both bands observed in the Western Blot above are believed to correspond to Chromogranin A.

Western blot - Recombinant Human Chromogranin A protein (ab85486)

**Please note:** All products are "FOR RESEARCH USE ONLY. NOT FOR USE IN DIAGNOSTIC PROCEDURES"

### Our Abpromise to you: Quality guaranteed and expert technical support

- Replacement or refund for products not performing as stated on the datasheet
- Valid for 12 months from date of delivery
- Response to your inquiry within 24 hours
- We provide support in Chinese, English, French, German, Japanese and Spanish

- Extensive multi-media technical resources to help you
- We investigate all quality concerns to ensure our products perform to the highest standards

If the product does not perform as described on this datasheet, we will offer a refund or replacement. For full details of the Abpromise, please visit <https://www.abcam.com/abpromise> or contact our technical team.

### **Terms and conditions**

---

- Guarantee only valid for products bought direct from Abcam or one of our authorized distributors