

Recombinant human CNTFR protein ab191640

2 Images

Description	
Product name	Recombinant human CNTFR protein
Biological activity	Measured by its binding ability in a functional ELISA. Immobilized Human CNTF Receptor alpha at 10 µg/ml (100 µl/well) can bind biotinylated Human CNTF with a linear ranger of 3.2 - 100 ng/ml.
Purity	> 95 % SDS-PAGE.
Endotoxin level	< 1.000 Eu/µg
Expression system	HEK 293 cells
Accession	<u>P26992</u>
Protein length	Full length protein
Animal free	No
Nature	Recombinant
Species	Human
Sequence	QRHSPQEAPHVQYERLGSDVTLPCGTANWDAAVTWRVN GTDLAPDLLNGS QLVLHGLELGHSGLYACFHRDSWHLRHQVLLHVGLPPRE PVLSCRSNTYP KGFYCSWHLPTPTYIPNTFNVTVLHGSKIMVCEKDPALKN RCHIRYMHLF STIKYKVSISVSNALGHNATAITFDEFTIVKPDPPENVVARP VPSNPRRL EVTWQTPSTWPDPEFPLKFFLRYPILLDQWQHVELSD GTAHTITDAYA GKEYIIQVAAKDNEIGTWSWVAHAATPWTEEPRLTTE AQAAETTTST TSSLAPPTTKICDPGELGSGGGP
Predicted molecular weight	37 kDa including tags
Amino acids	23 to 346
Tags	His tag C-Terminus
Additional sequence information	AAH01492.

Specifications

Our **Abpromise guarantee** covers the use of **ab191640** in the following tested applications.

The application notes include recommended starting dilutions; optimal dilutions/concentrations should be determined by the end user.

Applications Functional Studies

SDS-PAGE

Form Lyophilized

Preparation and Storage

Stability and Storage Shipped at 4°C. Store at 4°C prior to reconstitution. Store at -80°C. Avoid freeze / thaw cycle. For long term storage it is recommended to add a carrier protein on reconstitution (0.1% HSA or BSA).

pH: 7.40

Constituents: 5% Trehalose, 95% PBS

This product is an active protein and may elicit a biological response in vivo, handle with caution.

Reconstitution Reconstitute with sterile deionized water to a concentration of 200 µg/ml.

General Info

Function Binds to CNTF. The alpha subunit provides the receptor specificity.

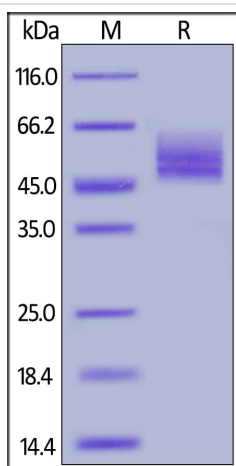
Tissue specificity Nervous system and skeletal muscle.

Sequence similarities Belongs to the type I cytokine receptor family. Type 3 subfamily.
Contains 2 fibronectin type-III domains.
Contains 1 Ig-like C2-type (immunoglobulin-like) domain.

Domain The WSXWS motif appears to be necessary for proper protein folding and thereby efficient intracellular transport and cell-surface receptor binding.

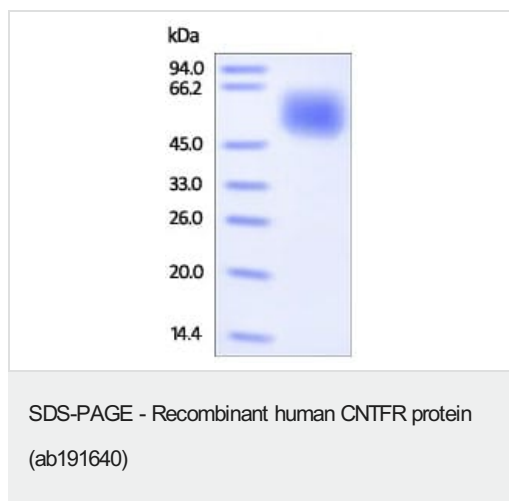
Cellular localization Cell membrane.

Images



Human CNTF R alpha (His Tag) on SDS-PAGE under reducing (R) condition. The gel was stained overnight with Coomassie Blue. The purity of the protein is greater than 95%.

SDS-PAGE - Recombinant human CNTFR protein
(ab191640)



SDS-PAGE analysis of reduced ab191640 stained overnight with Coomassie Blue. DTT-reduced protein migrates as 45-48 kDa due to glycosylation.

Please note: All products are "FOR RESEARCH USE ONLY. NOT FOR USE IN DIAGNOSTIC PROCEDURES"

Our Abpromise to you: Quality guaranteed and expert technical support

- Replacement or refund for products not performing as stated on the datasheet
- Valid for 12 months from date of delivery
- Response to your inquiry within 24 hours
- We provide support in Chinese, English, French, German, Japanese and Spanish
- Extensive multi-media technical resources to help you
- We investigate all quality concerns to ensure our products perform to the highest standards

If the product does not perform as described on this datasheet, we will offer a refund or replacement. For full details of the Abpromise, please visit <https://www.abcam.com/abpromise> or contact our technical team.

Terms and conditions

- Guarantee only valid for products bought direct from Abcam or one of our authorized distributors