

## Product datasheet

# Recombinant Human Cofilin protein ab62958

[1 References](#) [2 Images](#)

### Description

<b>Product name</b>	Recombinant Human Cofilin protein
<b>Purity</b>	> 95 % SDS-PAGE. purified by using conventional chromatography techniques
<b>Expression system</b>	Escherichia coli
<b>Protein length</b>	Full length protein
<b>Animal free</b>	No
<b>Nature</b>	Recombinant
<b>Species</b>	Human
<b>Sequence</b>	<b>MGSSHHHHHH SSGLVPRGSH</b> MASGVAVSDG VIKVFNDMKV RKSSTPEEVK KRKKAVLFCL SEDKKNILE EGKEILVGDV GQTVDDPYAT FVKMLPKDC RYALYDATYE TKESKKEDLV FIFWAPESAP LKSKMYASS KDAIKKKLTG IKHELQANCY EEVKDRCTLA EKLGGSAVIS LEGKPL

### Specifications

Our **Abpromise guarantee** covers the use of **ab62958** in the following tested applications.

The application notes include recommended starting dilutions; optimal dilutions/concentrations should be determined by the end user.

<b>Applications</b>	SDS-PAGE Western blot
<b>Form</b>	Liquid

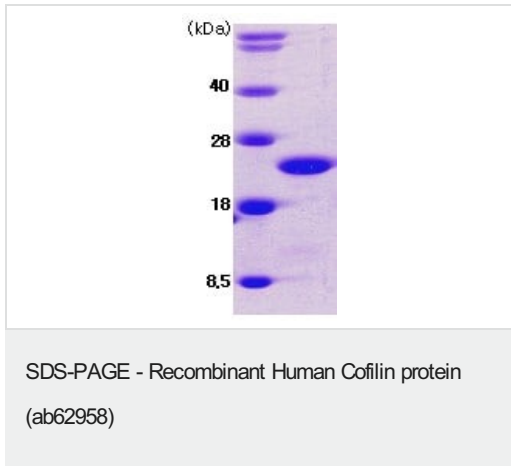
### Preparation and Storage

<b>Stability and Storage</b>	Shipped at 4°C. Upon delivery aliquot and store at -20°C. Avoid freeze / thaw cycles. pH: 8.00 Constituents: 0.242% Tris, 10% Glycerol (glycerin, glycerine)
------------------------------	--

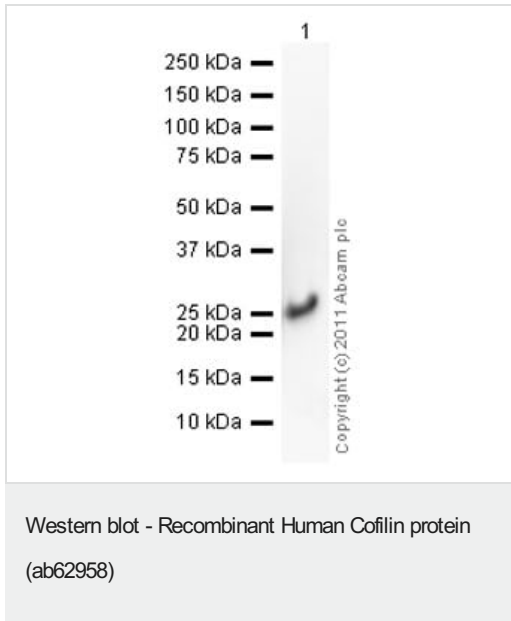
### General Info

<b>Function</b>	Controls reversibly actin polymerization and depolymerization in a pH-sensitive manner. It has the ability to bind G- and F-actin in a 1:1 ratio of cofilin to actin. It is the major component of intranuclear and cytoplasmic actin rods.
<b>Tissue specificity</b>	Widely distributed in various tissues.
<b>Sequence similarities</b>	Belongs to the actin-binding proteins ADF family. Contains 1 ADF-H domain.
<b>Post-translational modifications</b>	Phosphorylated on Ser-3 in resting cells.
<b>Cellular localization</b>	Nucleus matrix. Cytoplasm > cytoskeleton. Almost completely in nucleus in cells exposed to heat shock or 10% dimethyl sulfoxide.

Images



SDS Page analysis of ab62958 (3ug, 15% gel).



**Please note:** All products are "FOR RESEARCH USE ONLY. NOT FOR USE IN DIAGNOSTIC PROCEDURES"

**Our Abpromise to you: Quality guaranteed and expert technical support**

- Replacement or refund for products not performing as stated on the datasheet
- Valid for 12 months from date of delivery
- Response to your inquiry within 24 hours
- We provide support in Chinese, English, French, German, Japanese and Spanish
- Extensive multi-media technical resources to help you
- We investigate all quality concerns to ensure our products perform to the highest standards

If the product does not perform as described on this datasheet, we will offer a refund or replacement. For full details of the Abpromise, please visit <https://www.abcam.com/abpromise> or contact our technical team.

#### **Terms and conditions**

---

- Guarantee only valid for products bought direct from Abcam or one of our authorized distributors