

Product datasheet

Recombinant Human Contactin 6 protein ab109345

1 Image

Description

Product name	Recombinant Human Contactin 6 protein
Biological activity	Induces Hes-1 in 3T3L-1 cells.
Purity	> 90 % SDS-PAGE. ab109345 is an 0.2 µm filtered solution.
Endotoxin level	< 0.100 Eu/µg
Expression system	HEK 293 cells
Accession	<u>Q9UQ52</u>
Protein length	Full length protein
Animal free	No
Nature	Recombinant
Species	Human
Predicted molecular weight	150 kDa including tags
Amino acids	1 to 999

Specifications

Our **Abpromise guarantee** covers the use of **ab109345** in the following tested applications.

The application notes include recommended starting dilutions; optimal dilutions/concentrations should be determined by the end user.

Applications	SDS-PAGE Functional Studies
Form	Liquid
Additional notes	Induces Hes-1 in 3T3L-1 cells.

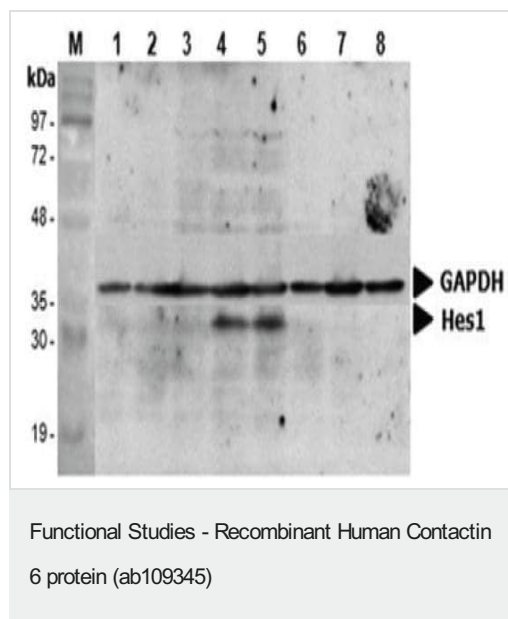
Preparation and Storage

Stability and Storage	Shipped at 4°C. Upon delivery aliquot and store at -20°C. Avoid repeated freeze / thaw cycles. Constituent: PBS
------------------------------	--

General Info

Function	Contactins mediate cell surface interactions during nervous system development. Participates in oligodendrocytes generation by acting as a ligand of NOTCH1. Its association with NOTCH1 promotes NOTCH1 activation through the released notch intracellular domain (NICD) and subsequent translocation to the nucleus. Involved in motor coordination.
Tissue specificity	Expressed in nervous system. Highly expressed in cerebellum. Expressed at intermediate level in thalamus, subthalamic nucleus. Weakly expressed in corpus callosum, caudate nucleus and spinal cord.
Sequence similarities	Belongs to the immunoglobulin superfamily. Contactin family. Contains 4 fibronectin type-III domains. Contains 6 Ig-like C2-type (immunoglobulin-like) domains.
Cellular localization	Cell membrane.

Images



Induction of Hes-1 with the treatment of hContactin-6-Fc.

A Mouse preadipocyte cell line, 3T3L1, was stimulated with 5 µg/ml of ab109345 as in indicated time points and each cell lysate was prepared and subjected to Western blot by using anti-Mouse Hes-1 or GAPDH (loading control).

Lane M: Marker

Lane 1: ab109345, 0 minutes

Lane 2: ab109345, 10 minutes

Lane 3: ab109345, 30 minutes

Lane 4: ab109345, 1 h

Lane 5: ab109345, 2 h

Lane 6: ab109345, 4 h

Lane 7: ab109345, 8 h

Lane 8: ab109345, 24 h

Please note: All products are "FOR RESEARCH USE ONLY. NOT FOR USE IN DIAGNOSTIC PROCEDURES"

Our Abpromise to you: Quality guaranteed and expert technical support

- Replacement or refund for products not performing as stated on the datasheet
- Valid for 12 months from date of delivery
- Response to your inquiry within 24 hours
- We provide support in Chinese, English, French, German, Japanese and Spanish
- Extensive multi-media technical resources to help you
- We investigate all quality concerns to ensure our products perform to the highest standards

If the product does not perform as described on this datasheet, we will offer a refund or replacement. For full details of the Abpromise, please visit <https://www.abcam.com/abpromise> or contact our technical team.

Terms and conditions

- Guarantee only valid for products bought direct from Abcam or one of our authorized distributors