

Product datasheet

Recombinant Human Corin protein ab153116

1 Image

Description

Product name	Recombinant Human Corin protein
Expression system	Wheat germ
Protein length	Protein fragment
Animal free	No
Nature	Recombinant
Species	Human
Sequence	CKERDLWECPSNKQCLKHTVICDGFDPDYMDEKNCS FCQDDELECANH ACVSRDLWCDGEADCSDSSDEWDCVTLNINSSSFLM VHRAATEHHVCA
Amino acids	616 to 715
Tags	GST tag N-Terminus

Specifications

Our **Abpromise guarantee** covers the use of **ab153116** in the following tested applications.

The application notes include recommended starting dilutions; optimal dilutions/concentrations should be determined by the end user.

Applications	ELISA Western blot
Form	Liquid
Additional notes	

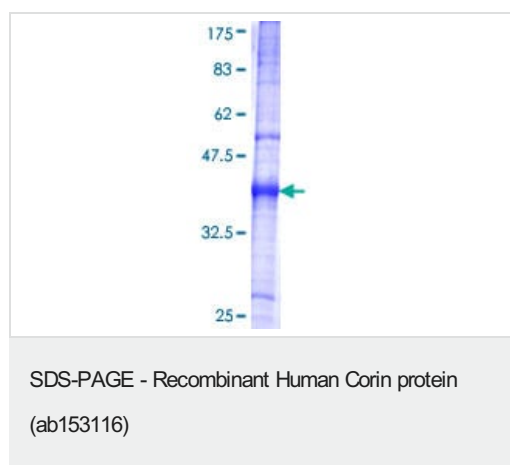
Preparation and Storage

Stability and Storage	Shipped on dry ice. Upon delivery aliquot and store at -80°C. Avoid freeze / thaw cycles. pH: 8.00 Constituents: 0.31% Glutathione, 0.79% Tris HCl
------------------------------	--

General Info

Function	Serine-type endopeptidase involved in atrial natriuretic peptide hormone processing. Converts through proteolytic cleavage the non-functional propeptide NPPA/ANP into the active hormone which promotes natriuresis, diuresis, and vasodilatation. May also process pro-NPPB the B-type natriuretic peptide.
Tissue specificity	Highly expressed in heart. Expressed in heart myocytes.
Sequence similarities	Belongs to the peptidase S1 family. Contains 2 FZ (frizzled) domains. Contains 7 LDL-receptor class A domains. Contains 1 peptidase S1 domain. Contains 1 SRCR domain.
Post-translational modifications	N-glycosylated; required for processing and activation. Activated through proteolytic processing by a trypsin-like protease; cleaved into a N-terminal propeptide and an activated corin protease fragment. A disulfide bond links the N-terminal propeptide and the activated corin protease fragment.
Cellular localization	Cell membrane.

Images



ab153116 on a 12.5% SDS-PAGE stained with Coomassie Blue.

Please note: All products are "FOR RESEARCH USE ONLY. NOT FOR USE IN DIAGNOSTIC PROCEDURES"

Our Abpromise to you: Quality guaranteed and expert technical support

- Replacement or refund for products not performing as stated on the datasheet
- Valid for 12 months from date of delivery
- Response to your inquiry within 24 hours
- We provide support in Chinese, English, French, German, Japanese and Spanish
- Extensive multi-media technical resources to help you
- We investigate all quality concerns to ensure our products perform to the highest standards

If the product does not perform as described on this datasheet, we will offer a refund or replacement. For full details of the Abpromise, please visit <https://www.abcam.com/abpromise> or contact our technical team.

Terms and conditions

- Guarantee only valid for products bought direct from Abcam or one of our authorized distributors