

## Product datasheet

# Recombinant Human CRLF3 protein ab162534

1 Image

### Description

<b>Product name</b>	Recombinant Human CRLF3 protein	
<b>Expression system</b>	Wheat germ	
<b>Accession</b>	<b><u>Q8IU18</u></b>	
<b>Protein length</b>	Full length protein	
<b>Animal free</b>	No	
<b>Nature</b>	Recombinant	
<b>Species</b>	Human	
<b>Sequence</b>	MRGAMELEPELLLQEARENVEAAQSYRRELGHRLEGLRE ARRQIKESASQ TRDVLKQHFNDLKGTLGKLLDERLVTLLQEVDTIEQETIKP LDDCQKLIE HGVNTAEDLVREGEIAMLGGVGEENEKLWSFTKKASHIQL DSLPEVPLLV DVPCLSAQLDDDSILNVKDHIFKHGTVASRPPVQIEELIEKP GGIVRWC KVDDDFTAQDYRLQFRKCTSNHFEDVYVGSETEFVMLHID PNVDYQFRVC ARGDGRQEWSPWSVPQIGHSTLVPHEWTAGFEGYSLSS RRNIALRNDSSES SGVLYSRAPTYFCGQTLTFRVETVGQPDRRDSIGVCAEKQ DGYDSLQRDQ AVCISTNGAVFVNGKEMTNQLPAVTSGSTVTFDIEAVTLGT TSNNEGGHF KLRVTISSNNREVVFDWLLDQSCGSLYFGCSFFYPGWKV LVF	
<b>Amino acids</b>	1 to 442	
<b>Tags</b>	GST tag N-Terminus	

### Specifications

Our **Abpromise guarantee** covers the use of **ab162534** in the following tested applications.

The application notes include recommended starting dilutions; optimal dilutions/concentrations should be determined by the end user.

**Applications** ELISA

Western blot

**Form** Liquid

**Additional notes**

## Preparation and Storage

---

**Stability and Storage** Shipped on dry ice. Upon delivery aliquot and store at -80°C. Avoid freeze / thaw cycles.  
pH: 8.00  
Constituents: 0.31% Glutathione, 0.79% Tris HCl

## General Info

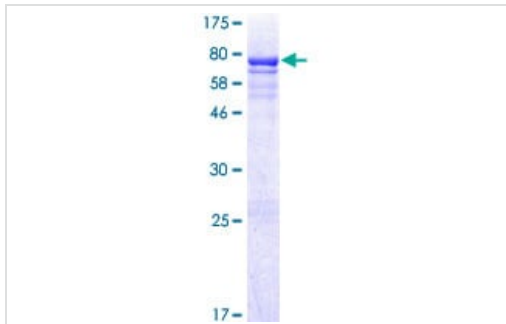
---

**Relevance** CRLF3 (Cytokine receptor-like factor 3) contains one fibronectin type-III domain. It is expressed in skin and squamous cell carcinoma (SCC) and in lesion actinic keratosis (AK).

**Cellular localization** Cytoplasmic

## Images

---



ab162534 on a 12.5% SDS-PAGE stained with Coomassie Blue.

SDS-PAGE - Recombinant Human CRLF3 protein  
(ab162534)

**Please note:** All products are "FOR RESEARCH USE ONLY. NOT FOR USE IN DIAGNOSTIC PROCEDURES"

## Our Abpromise to you: Quality guaranteed and expert technical support

---

- Replacement or refund for products not performing as stated on the datasheet
- Valid for 12 months from date of delivery
- Response to your inquiry within 24 hours
- We provide support in Chinese, English, French, German, Japanese and Spanish
- Extensive multi-media technical resources to help you
- We investigate all quality concerns to ensure our products perform to the highest standards

If the product does not perform as described on this datasheet, we will offer a refund or replacement. For full details of the Abpromise,

please visit <https://www.abcam.com/abpromise> or contact our technical team.

## Terms and conditions

---

- Guarantee only valid for products bought direct from Abcam or one of our authorized distributors