

Recombinant Human CRMP2 protein ab114269

1 Image

Description	
Product name	Recombinant Human CRMP2 protein
Expression system	Wheat germ
Accession	<u>Q16555</u>
Protein length	Full length protein
Animal free	No
Nature	Recombinant
Species	Human
Sequence	MSYQGKKNIPRITSDRLLIKGGKVNDDQSFYADIYMEDGLIK QIGENLI VPGGVKTIEAHSRMVIPGGIDVHTRFQMPDQGMTSADDDFF QGTKAALAGG TTMIIDHVVPEPGTSLLAAFDQWREWADSKSCCDYSLHV DISEWHKGIQE EMEALVKDHGVNSFLVYMAFKDRFQLTDCQIYEVLSVIRDI GAIAQVHAE NGDIAEEQQRILDLGITGPEGHVLSRPEEVEAEAVNRAITIA NQTNCPL YITKVMSKSSAEVIAQARKKGTVVYGEPIASLGTDGSHYW SKNWAKAAA FVTSPPLSPDPTTDFLNSLLSCGDLQVTGSAHCTFNTAQ KAVGKDNFTL IPEGTNGTEERMSVIWDKAVVTGKMDENQFVAVTSTNAA KVFNL YPRKGR IAVGSDADLVWDPDSVKTISAKTHNSSLEYNIFEGMECRG SPLVVISQG KMLEDGTLHVTEGSGRYPRKPFDPFVYKRIKARSRLAELR GVPRGLYD GPVCEVSVTPKTVTPASSAKTSPAKQQAPPVRNLHQSGF SLSGAQIDDNI PRRTTQRMAPPGGRANITSLG
Predicted molecular weight	89 kDa including tags
Amino acids	1 to 572
Tags	GST tag N-Terminus

Specifications

Our **Abpromise guarantee** covers the use of **ab114269** in the following tested applications.

The application notes include recommended starting dilutions; optimal dilutions/concentrations should be determined by the end user.

Applications

ELISA

Western blot

SDS-PAGE

Form

Liquid

Additional notes

Preparation and Storage

Stability and Storage

Shipped on dry ice. Upon delivery aliquot and store at -80°C. Avoid freeze / thaw cycles.

pH: 8.00

Constituents: 0.3% Glutathione, 0.79% Tris HCl

General Info

Function

Necessary for signaling by class 3 semaphorins and subsequent remodeling of the cytoskeleton. Plays a role in axon guidance, neuronal growth cone collapse and cell migration.

Tissue specificity

Ubiquitous.

Sequence similarities

Belongs to the DHOase family. Hydantoinase/dihydropyrimidinase subfamily.

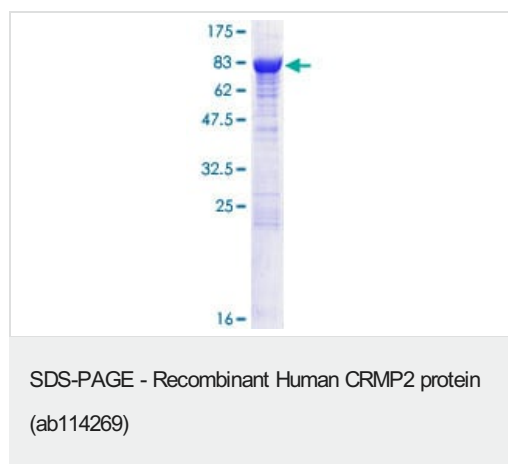
Post-translational modifications

3F4, a monoclonal antibody which strongly stains neurofibrillary tangles in Alzheimer disease brains, specifically labels DPYSL2 when phosphorylated on Ser-518, Ser-522 and Thr-509.

Cellular localization

Cytoplasm.

Images



12.5% SDS-PAGE analysis of ab114269.
Stained with Coomassie Blue.

Please note: All products are "FOR RESEARCH USE ONLY. NOT FOR USE IN DIAGNOSTIC PROCEDURES"

Our Abpromise to you: Quality guaranteed and expert technical support

- Replacement or refund for products not performing as stated on the datasheet
- Valid for 12 months from date of delivery
- Response to your inquiry within 24 hours

- We provide support in Chinese, English, French, German, Japanese and Spanish
- Extensive multi-media technical resources to help you
- We investigate all quality concerns to ensure our products perform to the highest standards

If the product does not perform as described on this datasheet, we will offer a refund or replacement. For full details of the Abpromise, please visit <https://www.abcam.com/abpromise> or contact our technical team.

Terms and conditions

- Guarantee only valid for products bought direct from Abcam or one of our authorized distributors