

Recombinant human CSF-1-R protein ab155619

3 Images

Description	
Product name	Recombinant human CSF-1-R protein
Biological activity	Activity measured by its ability to inhibit the MCSF-induced proliferation of NFS-60 mouse myelogenous leukemia lymphoblast cells. The ED ₅₀ for this effect is typically 1.5-8.7 pg/ml in the presence of 1 ng/ml of rhMCSF.
Purity	> 95 % SDS-PAGE.
Endotoxin level	< 1.000 Eu/μg
Expression system	HEK 293 cells
Accession	<u>P07333</u>
Protein length	Protein fragment
Animal free	No
Nature	Recombinant
Species	Human
Sequence	IPVIEPSVPELVVKPGATVTLRCVGNGSVEWDGPPSPHW TLYSDGSSSIL STNNATFQNTGTYRCTEPGDPLGGSAAIHLVKDPARPWN VLAQEVVVFE DQDALLPCLLTDPVLEAGVSLVRVRGRPLMRHTNYSFSP WHGFTIHRAKF IQSQDYQCSALMGGRKVMISISIRLKVQKVIPGPPALTLVPA ELVRIRGEA AQIVCSASSVDVNFDFVLQHNNTKLAIPQQSDFHNNRYQK VLTNLNDQVD FQHAGNYSCVASNVQGHSTSMFFRVVESAYLNLSSSEQN LIQEVTVGEGL NLKVMVEAYPGLQGFWTYLGPFSDHQPEPKLANATTKD TYRHTFTLSLP RLKPSEAGRYSFLARNPGGWRAITFELTRYPPPEVSVIWT FINGSGTLLC AASGYQPQNVTLQCSGHTDRCDEAQVLQVWDDPYPE VLSQEPFHKVTVQ SLLTVETLEHNQTYECRAHNSVSGSGWAFIPISAGAHTHP PDE

Predicted molecular weight	55 kDa including tags
Amino acids	20 to 512
Tags	His tag C-Terminus

Specifications

Our **Abpromise guarantee** covers the use of **ab155619** in the following tested applications.

The application notes include recommended starting dilutions; optimal dilutions/concentrations should be determined by the end user.

Applications	Functional Studies
	SDS-PAGE
Form	Lyophilized

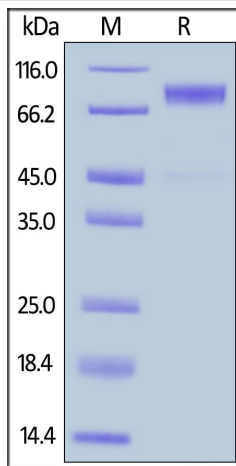
Preparation and Storage

Stability and Storage	Shipped at 4°C. Store at 4°C prior to reconstitution. Store at -80°C. Avoid freeze / thaw cycle.
	pH: 7.40
	Constituents: 95% PBS, 5% Trehalose
	This product is an active protein and may elicit a biological response in vivo, handle with caution.
Reconstitution	Reconstitute with sterile deionized water to a concentration of 200 µg/ml.

General Info

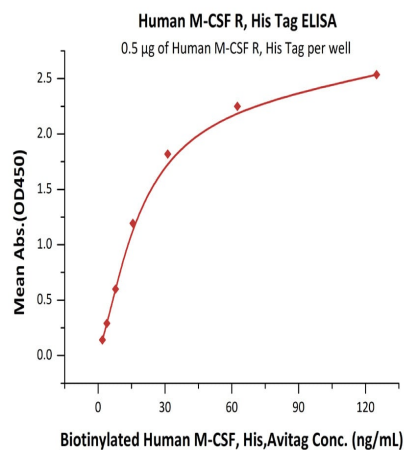
Function	Protein tyrosine-kinase transmembrane receptor for CSF1 and IL34.
Tissue specificity	Expressed in bone marrow and in differentiated blood mononuclear cells.
Sequence similarities	Belongs to the protein kinase superfamily. Tyr protein kinase family. CSF-1/PDGF receptor subfamily.
	Contains 5 Ig-like C2-type (immunoglobulin-like) domains.
	Contains 1 protein kinase domain.
Cellular localization	Membrane.

Images



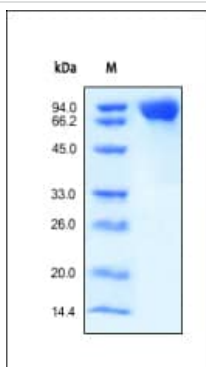
SDS-PAGE - Recombinant human CSF-1-R protein
(ab155619)

Human CSF-1-R (His Tag) on SDS-PAGE under reducing (R) condition. The gel was stained overnight with Coomassie Blue. The purity of the protein is greater than 96%.



Functional Studies - Recombinant human CSF-1-R
protein (ab155619)

Immobilized ab155619 at 5 µg/mL (100 µL/well) can bind biotinylated human M-CSF, His,Avitag ([ab246167](#)) with a linear range of 2-31 ng/mL.



SDS-PAGE - Recombinant human CSF-1-R protein
(ab155619)

Purity of ab155619 determined by SDS-PAGE analysis under reduced conditions and staining overnight with coomassie blue.

Our Abpromise to you: Quality guaranteed and expert technical support

- Replacement or refund for products not performing as stated on the datasheet
- Valid for 12 months from date of delivery
- Response to your inquiry within 24 hours

- We provide support in Chinese, English, French, German, Japanese and Spanish
- Extensive multi-media technical resources to help you
- We investigate all quality concerns to ensure our products perform to the highest standards

If the product does not perform as described on this datasheet, we will offer a refund or replacement. For full details of the Abpromise, please visit <https://www.abcam.com/abpromise> or contact our technical team.

Terms and conditions

- Guarantee only valid for products bought direct from Abcam or one of our authorized distributors