

Recombinant human CSNK1A1L protein ab191034

5 Images

Description

| | |
|---------------------------------|---|
| Product name | Recombinant human CSNK1A1L protein |
| Biological activity | The specific activity of ab191034 was determined to be 160 nmol/min/mg. |
| Purity | > 75 % Densitometry. Affinity purified. |
| Expression system | Baculovirus infected Sf9 cells |
| Accession | Q8N752 |
| Protein length | Full length protein |
| Animal free | No |
| Nature | Recombinant |
| Species | Human |
| Sequence | MTNNSGSKAELVVGKYLVRKIGSGSFGDVYLGITTTNG EEVAVKLESQ KVKHPQLLYESKLYTILQGGVGIPMHWYGQEKDNNVLVM DLLGPSLEDL FNFCRRFTMKTVLMLADQMISRIEYVHTKNFLHRDIKPDN FLMGTRHC NKLFLIDFGLAKKYRDNRTQRHIPYREDKHLIGTVRYASINA HLGIEQSR RDDMESLGYVMFYFNRTSLPWQGLKAMTKKQKYEKISEK KMSTPVEVLCK GFPAEFAMYLNYCRGLRFEEVPDYMRLQLFRILFRTLNH QYDYTFDWTM LKQKAAQQAASSSGQGQQAQTQTGKQTEKNKNNVKDN |
| Predicted molecular weight | 64 kDa including tags |
| Amino acids | 1 to 337 |
| Tags | proprietary tag N-Terminus |
| Additional sequence information | BC028723. |

Specifications

Our [Abpromise guarantee](#) covers the use of **ab191034** in the following tested applications.

The application notes include recommended starting dilutions; optimal dilutions/concentrations should be determined by the end user.

| | |
|-------------------------|--|
| Applications | Functional Studies |
| | SDS-PAGE |
| | Western blot |
| Form | Liquid |
| Additional notes | ab91092 (Cow Casein full length protein) can be utilized as a substrate for assessing Kinase activity |

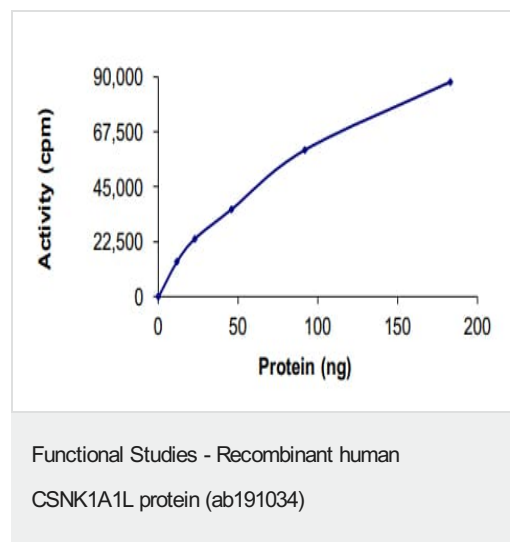
Preparation and Storage

| | |
|------------------------------|--|
| Stability and Storage | Shipped on Dry Ice. Upon delivery aliquot. Store at -80°C. Avoid freeze / thaw cycle. |
| | pH: 7.50 |
| | Constituents: 0.79% Tris HCl, 0.31% Glutathione, 0.87% Sodium chloride, 0.003% EDTA, 0.004% DTT, 25% Glycerol (glycerin, glycerine), 0.002% PMSF |
| | This product is an active protein and may elicit a biological response in vivo, handle with caution. |

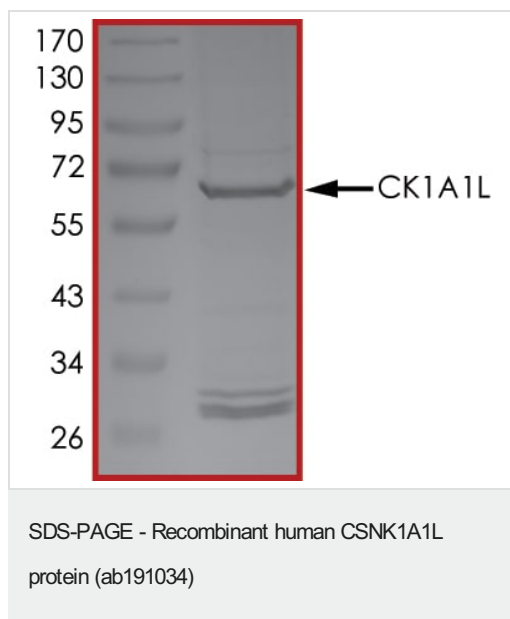
General Info

| | |
|------------------------------|---|
| Relevance | Casein kinases are operationally defined by their preferential utilization of acidic proteins such as caseins as substrates. CSNK1A1L can phosphorylate a large number of proteins and participates in Wnt signaling. |
| Cellular localization | Cytoplasmic |

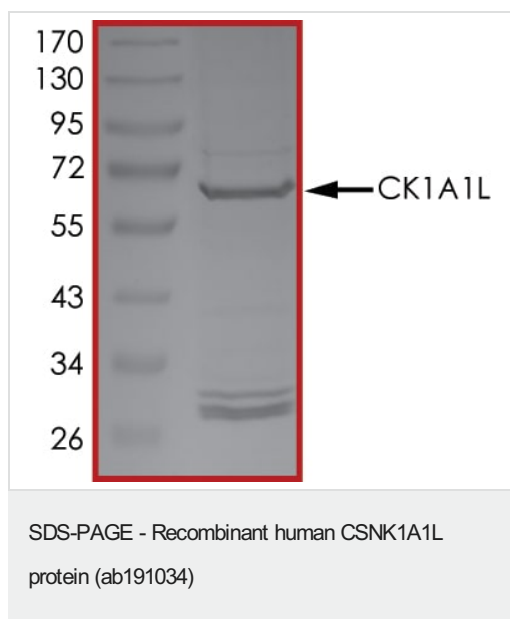
Images



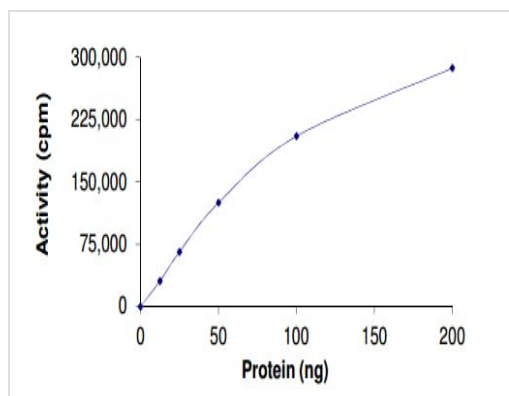
The specific activity of CSNK1A1L (ab191034) was determined to be 160 nmol/min/mg as per activity assay protocol



SDS PAGE analysis of ab191034



SDS PAGE analysis of ab191034



Kinase assay showing the specific activity of ab191034 to be 160 nmol/min/mg.

Functional Studies - Recombinant human CSNK1A1L protein (ab191034)



SDS-PAGE analysis of ab191034.

SDS-PAGE - Recombinant human CSNK1A1L protein (ab191034)

Please note: All products are "FOR RESEARCH USE ONLY. NOT FOR USE IN DIAGNOSTIC PROCEDURES"

Our Abpromise to you: Quality guaranteed and expert technical support

- Replacement or refund for products not performing as stated on the datasheet
- Valid for 12 months from date of delivery
- Response to your inquiry within 24 hours
- We provide support in Chinese, English, French, German, Japanese and Spanish
- Extensive multi-media technical resources to help you
- We investigate all quality concerns to ensure our products perform to the highest standards

If the product does not perform as described on this datasheet, we will offer a refund or replacement. For full details of the Abpromise, please visit <https://www.abcam.com/abpromise> or contact our technical team.

Terms and conditions

- Guarantee only valid for products bought direct from Abcam or one of our authorized distributors