

Product datasheet

Recombinant Human CSP-C protein (denatured) ab202612

1 Image

Description

Product name	Recombinant Human CSP-C protein (denatured)
Purity	> 85 % SDS-PAGE.
Expression system	Escherichia coli
Accession	<u>P20718-1</u>
Protein length	Full length protein
Animal free	No
Nature	Recombinant
Species	Human
Sequence	MGSSHHHHHHSSGLVPRGSHMEIIGGHEAKPHSRPYMAF VQFLQEKSRRK CGGILVRKDFVLTAHCQGSSINVTLGAHNIKEQERTQQFI PVKRPIPHP AYNPKNFSNDIMLLQLERKAKWTTAVRPLRLPSSKAQVKP GQLCSVAGWG YSMSTLATTLQEVLLTVQKDCQCERLFHGNYSRATEICV GDPKKTQTGF KGDSGGPLVCKDVAQGILSYGNKKGTTPPGVYIKVSHFLP WIKRTMKRL
Predicted molecular weight	28 kDa including tags
Amino acids	20 to 246
Tags	His tag N-Terminus
Additional sequence information	This is the full length mature protein amino acids 20-246 without the signal peptide and propeptide. NCBI Accession No. NP_219491.

Specifications

Our **Abpromise guarantee** covers the use of **ab202612** in the following tested applications.

The application notes include recommended starting dilutions; optimal dilutions/concentrations should be determined by the end user.

Applications SDS-PAGE

Form	Liquid
Additional notes	Previously labelled as Granzyme H.

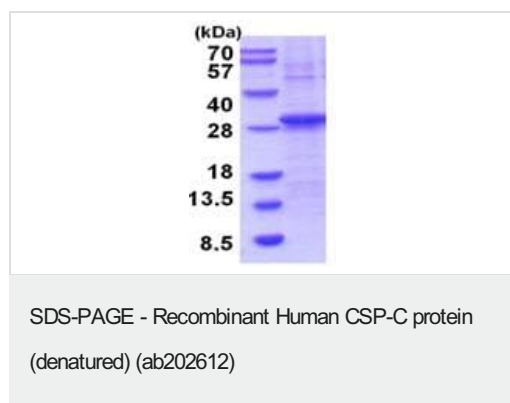
Preparation and Storage

Stability and Storage	Shipped at 4°C. Store at +4°C short term (1-2 weeks). Upon delivery aliquot. Store at -20°C or -80°C. Avoid freeze / thaw cycle. pH: 8.00 Constituents: 10% Glycerol (glycerin, glycerine), 0.24% Tris
------------------------------	--

General Info

Function	Cytotoxic chymotrypsin-like serine protease with preference for bulky and aromatic residues at the P1 position and acidic residues at the P3' and P4' sites. Probably necessary for target cell lysis in cell-mediated immune responses. Participates in the antiviral response via direct cleavage of several proteins essential for viral replication.
Tissue specificity	Constitutively expressed in NK cells.
Sequence similarities	Belongs to the peptidase S1 family. Granzyme subfamily. Contains 1 peptidase S1 domain.
Cellular localization	Cytoplasmic granule. Cytoplasmic granules of cytolytic T-lymphocytes.

Images



15% SDS-PAGE analysis of ab202612 (3µg).

Please note: All products are "FOR RESEARCH USE ONLY. NOT FOR USE IN DIAGNOSTIC PROCEDURES"

Our Abpromise to you: Quality guaranteed and expert technical support

- Replacement or refund for products not performing as stated on the datasheet
- Valid for 12 months from date of delivery
- Response to your inquiry within 24 hours
- We provide support in Chinese, English, French, German, Japanese and Spanish
- Extensive multi-media technical resources to help you

- We investigate all quality concerns to ensure our products perform to the highest standards

If the product does not perform as described on this datasheet, we will offer a refund or replacement. For full details of the Abpromise, please visit <https://www.abcam.com/abpromise> or contact our technical team.

Terms and conditions

- Guarantee only valid for products bought direct from Abcam or one of our authorized distributors