

Recombinant Human CTBP2 protein ab114954

1 Image

Description

Product name	Recombinant Human CTBP2 protein		
Expression system	Wheat germ		
Accession	<u>P56545</u>		
Protein length	Full length protein		
Animal free	No		
Nature	Recombinant		
Species	Human		
Sequence	MALVDKHKVKRQRLDRICEGIRPQIMNGPLHPRPLVALLD GRDCTVEMPI LKDLATVAFCD AQSTQEIHEKVLNEAVGAMMYHTITLTRED LEKFKALRV MVRIGSGYDNVDIKAAGELGIAVCNIPSAAVEETADSTICHIL NLYYRNT WLYQALREGTRVQSVEQIREVASGAARIRGETLGLIGFGRT GQAVAVRAK AFGFSVIFYDPYLQDGIERSLGVRVYTLQDLLYQSDCVSL HCNLNEHNI HLINDFTIKQMRQGAFLVNAARGGLVDEKALAQALKEGRIR GAALDVHES EPFSFAQGPKDAPNLICTPHTAWYSEQASLEMREAAAT EIRRAITGRIP ESLRNCVNKEFFVTSAPWSVIDQQAHPPELNGATYRYPPGI VGVAPGGLP AAMEGIIPGGIPVTHNLPTVAHPSQAPSPNQPTKHGDNRE HPNEQ		
Predicted molecular weight	75 kDa including tags		
Amino acids	1 to 445		

Specifications

Our **Abpromise guarantee** covers the use of **ab114954** in the following tested applications.

The application notes include recommended starting dilutions; optimal dilutions/concentrations should be determined by the end user.

Applications	ELISA
--------------	-------

	SDS-PAGE
	Western blot
<b>Form</b>	Liquid

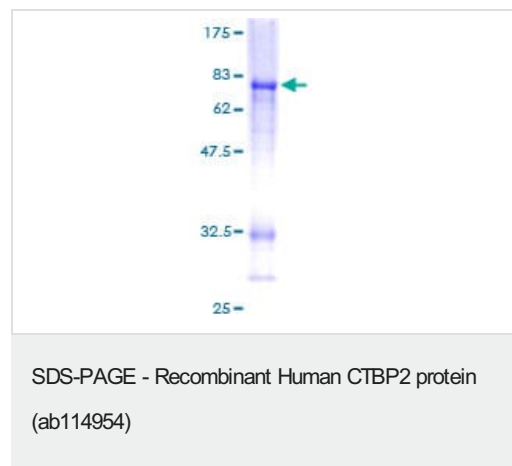
## Preparation and Storage

<b>Stability and Storage</b>	Shipped on dry ice. Upon delivery aliquot and store at -80°C. Avoid freeze / thaw cycles. pH: 8.00 Constituents: 0.3% Glutathione, 0.79% Tris HCl
------------------------------	---

## General Info

<b>Function</b>	Corepressor targeting diverse transcription regulators. Functions in brown adipose tissue (BAT) differentiation. Isoform 2 probably acts as a scaffold for specialized synapses.
<b>Tissue specificity</b>	Ubiquitous. Highest levels in heart, skeletal muscle, and pancreas.
<b>Sequence similarities</b>	Belongs to the D-isomer specific 2-hydroxyacid dehydrogenase family.
<b>Post-translational modifications</b>	Isoform 2 is phosphorylated upon DNA damage, probably by ATM or ATR at Thr-179; Ser-181 and Ser-185. Phosphorylation by HIPK2 on Ser-428 induces proteasomal degradation.
<b>Cellular localization</b>	Nucleus. Cell junction > synapse.

## Images



12.5% SDS-PAGE showing ab114954 at approximately 75.06kDa.  
Stained with Coomassie Blue.

**Please note:** All products are "FOR RESEARCH USE ONLY. NOT FOR USE IN DIAGNOSTIC PROCEDURES"

## Our Abpromise to you: Quality guaranteed and expert technical support

- Replacement or refund for products not performing as stated on the datasheet
- Valid for 12 months from date of delivery
- Response to your inquiry within 24 hours

- We provide support in Chinese, English, French, German, Japanese and Spanish
- Extensive multi-media technical resources to help you
- We investigate all quality concerns to ensure our products perform to the highest standards

If the product does not perform as described on this datasheet, we will offer a refund or replacement. For full details of the Abpromise, please visit <https://www.abcam.com/abpromise> or contact our technical team.

#### **Terms and conditions**

---

- Guarantee only valid for products bought direct from Abcam or one of our authorized distributors