

## Product datasheet

# Recombinant human CXCL14 protein ab50043

1 Image

### Description

---

<b>Product name</b>	Recombinant human CXCL14 protein
<b>Biological activity</b>	Biological Activity : Determined by it's ability to chemoattract activated monocytes using a concentration range of 1.0-10.0 ng/ml.
<b>Purity</b>	> 98 % SDS-PAGE. Greater than 98% by HPLC analyses. Endotoxin level is less than 0.1 ng per g (1EU/g).
<b>Expression system</b>	Escherichia coli
<b>Protein length</b>	Full length protein
<b>Animal free</b>	No
<b>Nature</b>	Recombinant
<b>Species</b>	Human
<b>Sequence</b>	SKCKCSRKGP KIRYSDVKKL EMKPKYPHCE EKMVIITTKS VSRYRGQEHCLHPKLQSTKR FIKWYNWNE KRRVYEE

### Specifications

---

Our **Abpromise guarantee** covers the use of **ab50043** in the following tested applications.

The application notes include recommended starting dilutions; optimal dilutions/concentrations should be determined by the end user.

<b>Applications</b>	Western blot SDS-PAGE Functional Studies
<b>Form</b>	Lyophilized

### Preparation and Storage

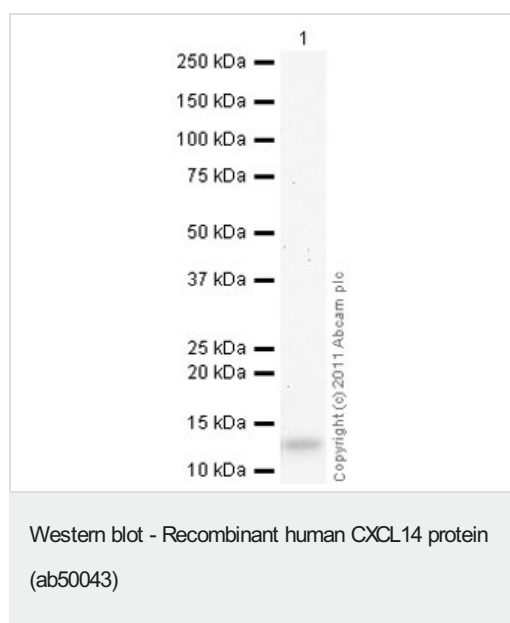
---

<b>Stability and Storage</b>	Shipped at 4°C. The lyophilized protein is stable for a few weeks at room temperature. Store at -20°C long term.  This product is an active protein and may elicit a biological response in vivo, handle with caution.
<b>Reconstitution</b>	For lot specific reconstitution information please contact our Scientific Support Team.

## General Info

<b>Function</b>	Potent chemoattractant for neutrophils, and weaker for dendritic cells. Not chemotactic for T-cells, B-cells, monocytes, natural killer cells or granulocytes. Does not inhibit proliferation of myeloid progenitors in colony formation assays.
<b>Tissue specificity</b>	Expressed in heart, brain, placenta, lung, liver, skeletal muscle, kidney and pancreas. Highly expressed in normal tissue without inflammatory stimuli and infrequently expressed in cancer cell lines. Weakly expressed in monocyte-derived dendritic cells. Not detected in lung or unstimulated peripheral blood lymphocytes.
<b>Sequence similarities</b>	Belongs to the intercrine alpha (chemokine CxC) family.
<b>Cellular localization</b>	Secreted.

## Images



Anti-CXCL14 antibody (**ab36622**) at 1 µg/ml + Recombinant human CXCL14 protein (ab50043) at 0.1 µg

### Secondary

Goat Anti-Rabbit IgG H&L (HRP) preadsorbed (**ab97080**) at 1/5000 dilution

Developed using the ECL technique.

Performed under reducing conditions.

**Exposure time:** 12 minutes

**Please note:** All products are "FOR RESEARCH USE ONLY. NOT FOR USE IN DIAGNOSTIC PROCEDURES"

## Our Abpromise to you: Quality guaranteed and expert technical support

- Replacement or refund for products not performing as stated on the datasheet
- Valid for 12 months from date of delivery
- Response to your inquiry within 24 hours
- We provide support in Chinese, English, French, German, Japanese and Spanish
- Extensive multi-media technical resources to help you
- We investigate all quality concerns to ensure our products perform to the highest standards

If the product does not perform as described on this datasheet, we will offer a refund or replacement. For full details of the Abpromise, please visit <https://www.abcam.com/abpromise> or contact our technical team.

## Terms and conditions

---

- Guarantee only valid for products bought direct from Abcam or one of our authorized distributors