

Recombinant Human Cyclin B1 protein ab128445

3 References 1 Image

Description

Product name	Recombinant Human Cyclin B1 protein
Purity	> 85 % SDS-PAGE. ab128445 was purified using conventional chromatography.
Expression system	Escherichia coli
Accession	P14635
Protein length	Full length protein
Animal free	No
Nature	Recombinant
Species	Human
Sequence	MGSSHHHHHH SSGLVPRGSH MGSHMALRVT RNSKINAENK AKINMAGAKR VPTAPAATSK PGLRPRTALG DIGNKVSEQL QAKMPMKKEA KPSATGKVID KKLKPLEKV PMLVPVPVSE PVPEPEPEPE PEPVKEEKLS PEPILVDAS PSPMETSGCA PAEEDLCQAF SDVILAVNDV DAEDGADPNL CSEYVKDIYA YLRQLEEEQA VRPKYLLGRE VTGNMRAILI DWLVQVQMKF RLLQETMYMT VSIIDRFMQN NCVPKKMLQL VGVTAMFIAS KYEEMYPPEI GDFAFVTDNT YTKHQIRQME MKILRALNFG LGRPLPLHFL RRASKIGEVD VEQHTLAKYL MELTMLDYDM VHFPPSQIAA GAFCLALKIL DNGEWPTLQ HYSYTEESL LPVMQHLAKN VVMVNQGLTK HMTVKNKYAT SKHAKISTLP QLNSALVQDL AKAVAKV
Predicted molecular weight	51 kDa including tags
Amino acids	1 to 433
Tags	His tag N-Terminus

Specifications

Our **Abpromise guarantee** covers the use of **ab128445** in the following tested applications.

The application notes include recommended starting dilutions; optimal dilutions/concentrations should be determined by the end user.

Applications	SDS-PAGE
Mass spectrometry	MALDI-TOF
Form	Liquid

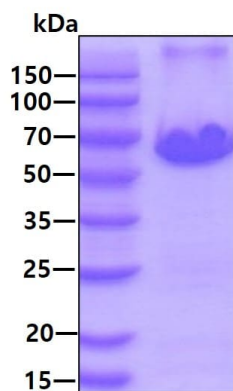
Preparation and Storage

Stability and Storage	Shipped at 4°C. Store at +4°C short term (1-2 weeks). Upon delivery aliquot. Store at -20°C or -80°C. Avoid freeze / thaw cycle. pH: 8.00 Constituents: 0.32% Tris HCl, 10% Glycerol (glycerin, glycerine), 0.88% Sodium chloride
------------------------------	---

General Info

Function	Essential for the control of the cell cycle at the G2/M (mitosis) transition.
Sequence similarities	Belongs to the cyclin family. Cyclin AB subfamily.
Developmental stage	Accumulates steadily during G2 and is abruptly destroyed at mitosis.
Post-translational modifications	Ubiquitinated by the SCF(NIP) complex during interphase, leading to its destruction. Not ubiquitinated during G2/M phases.
Cellular localization	Cytoplasm. Nucleus. Cytoplasm > cytoskeleton > centrosome.

Images



SDS-PAGE - Recombinant Human Cyclin B1 protein
(ab128445)

SDS-PAGE analysis of ab128445 (3 µg) under reducing conditions and visualized by coomassie blue stain.

Please note: All products are "FOR RESEARCH USE ONLY. NOT FOR USE IN DIAGNOSTIC PROCEDURES"

Our Abpromise to you: Quality guaranteed and expert technical support

- Replacement or refund for products not performing as stated on the datasheet

- Valid for 12 months from date of delivery
- Response to your inquiry within 24 hours
- We provide support in Chinese, English, French, German, Japanese and Spanish
- Extensive multi-media technical resources to help you
- We investigate all quality concerns to ensure our products perform to the highest standards

If the product does not perform as described on this datasheet, we will offer a refund or replacement. For full details of the Abpromise, please visit <https://www.abcam.com/abpromise> or contact our technical team.

Terms and conditions

- Guarantee only valid for products bought direct from Abcam or one of our authorized distributors