

Product datasheet

Recombinant Human Cyclophilin E protein ab78843

1 Image

Description

Product name	Recombinant Human Cyclophilin E protein
Biological activity	Specific activity is > 210nmol/min/ug, and is defined as the amount of enzyme that cleaves 1umole of suc-AAPF-pNA per minute at 37°C in Tris-Hcl pH8.0 using chymotrypsin.
Purity	> 95 % SDS-PAGE. ab78843 is purified using conventional chromatography techniques.
Expression system	Escherichia coli
Protein length	Full length protein
Animal free	No
Nature	Recombinant
Species	Human
Sequence	MRGSHHHHHH GMASMTGGQQ MGRDLYDDDD KDRWGSMATT KRVLYVGGLA EEVDDKVLHA AFIPFGDITD IQIPLDYETE KHRGF AFVEF ELAEDAAAAI DNMNESELF RTIRVNLAKP MRIKEGSSRP VWSDDDLKK FSGKLEENK EEEGSEPPKA ETQEGEPIAK KARSNPQVYM DIKIGNKPAG RIQMLLRSDV VPMTAENFRC LCTHEKGFGF KGSSFHRIIP QFMCQGGDFT NHNGTGGKSI YGKKFDDENF ILKHTGPGLL SMANSGPNTN GSQFFLTCDK TDWLDGKHVV FGEVTEGLDV LRQIEAQGSK DGKPKQKVII ADCGEYV

Specifications

Our **Abpromise guarantee** covers the use of **ab78843** in the following tested applications.

The application notes include recommended starting dilutions; optimal dilutions/concentrations should be determined by the end user.

Applications SDS-PAGE

Form Liquid

Preparation and Storage

Stability and Storage Shipped at 4°C. Upon delivery aliquot and store at -20°C. Avoid freeze / thaw cycles.

pH: 8.00

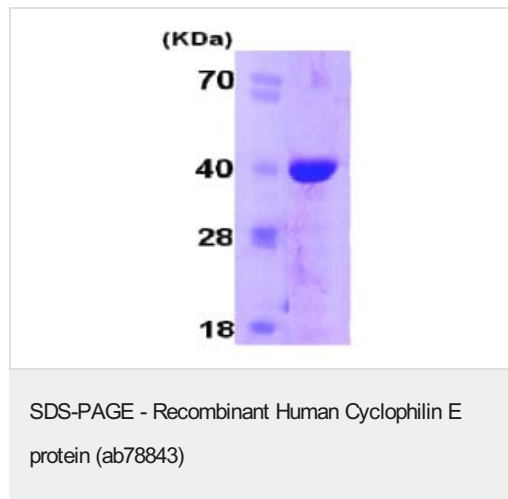
Constituent: 0.242% Tris

This product is an active protein and may elicit a biological response in vivo, handle with caution.

General Info

Function	PPases accelerate the folding of proteins. It catalyzes the cis-trans isomerization of proline imidic peptide bonds in oligopeptides. Combines RNA-binding and PPase activities. May be involved in muscle- and brain-specific processes. May be involved in pre-mRNA splicing.
Tissue specificity	Found in all the examined tissues including heart, brain, placenta, lung, liver, skeletal muscle, kidney and pancreas.
Sequence similarities	Belongs to the cyclophilin-type PPase family. PPase E subfamily. Contains 1 PPase cyclophilin-type domain. Contains 1 RRM (RNA recognition motif) domain.
Cellular localization	Nucleus.

Images



15% SDS-PAGE showing ab78843 at approximately 38kDa (3μg).

Please note: All products are "FOR RESEARCH USE ONLY. NOT FOR USE IN DIAGNOSTIC PROCEDURES"

Our Abpromise to you: Quality guaranteed and expert technical support

- Replacement or refund for products not performing as stated on the datasheet
- Valid for 12 months from date of delivery
- Response to your inquiry within 24 hours
- We provide support in Chinese, English, French, German, Japanese and Spanish
- Extensive multi-media technical resources to help you
- We investigate all quality concerns to ensure our products perform to the highest standards

If the product does not perform as described on this datasheet, we will offer a refund or replacement. For full details of the Abpromise, please visit <https://www.abcam.com/abpromise> or contact our technical team.

Terms and conditions

- Guarantee only valid for products bought direct from Abcam or one of our authorized distributors