

## Product datasheet

# Recombinant Human Cystatin S protein ab220461

1 Image

### Description

<b>Product name</b>	Recombinant Human Cystatin S protein
<b>Purity</b>	> 95 % SDS-PAGE.
<b>Endotoxin level</b>	< 1.000 Eu/μg
<b>Expression system</b>	HEK 293 cells
<b>Accession</b>	<b><u>P01036</u></b>
<b>Protein length</b>	Full length protein
<b>Animal free</b>	No
<b>Nature</b>	Recombinant
<b>Species</b>	Human
<b>Sequence</b>	SSSKEENRIIPGGIYDADLNDEWVQRALHFAISEYNKATED EYYRRPLQV LRAREQTFGG VNYFFDVEVGRITCKSQPNLDTCAFHEQPELQKKQLC SFEIYVPWEDRMSLVNSRCQE A
<b>Predicted molecular weight</b>	15 kDa including tags
<b>Amino acids</b>	21 to 141
<b>Tags</b>	His tag C-Terminus
<b>Additional sequence information</b>	This product is for the mature full length protein. The signal peptide is not included (AAH65714).

### Specifications

Our **Abpromise guarantee** covers the use of **ab220461** in the following tested applications.

The application notes include recommended starting dilutions; optimal dilutions/concentrations should be determined by the end user.

**Form** Lyophilized

### Preparation and Storage

**Stability and Storage** Shipped at 4°C. Store at -20°C or -80°C. Avoid freeze / thaw cycle.  
pH: 7.4  
Constituents: 0.87% Sodium chloride, 5% Trehalose, 0.49% MES

Lyophilized from 0.22 µm filtered solution.

## Reconstitution

Reconstitute with sterile deionized water to a concentration of 400 µg/ml.

## General Info

### Function

This protein strongly inhibits papain and ficin, partially inhibits stem bromelain and bovine cathepsin C, but does not inhibit porcine cathepsin B or clostripain. Papain is inhibited non-competitively.

### Tissue specificity

Expressed in submandibular and sublingual saliva but not in parotid saliva (at protein level).  
Expressed in saliva, tears, urine and seminal fluid.

### Sequence similarities

Belongs to the cystatin family.

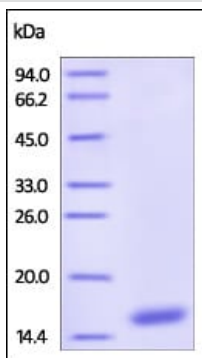
### Post-translational modifications

Phosphorylated at both its N- and C-terminal regions.

### Cellular localization

Secreted.

## Images



SDS-PAGE - Recombinant Human Cystatin S protein (ab220461)

SDS-PAGE analysis of reduced ab220461 stained overnight with Coomassie Blue.

The protein migrates as 15 kDa under reducing condition (SDS-PAGE).

**Please note:** All products are "FOR RESEARCH USE ONLY. NOT FOR USE IN DIAGNOSTIC PROCEDURES"

## Our Abpromise to you: Quality guaranteed and expert technical support

- Replacement or refund for products not performing as stated on the datasheet
- Valid for 12 months from date of delivery
- Response to your inquiry within 24 hours
- We provide support in Chinese, English, French, German, Japanese and Spanish
- Extensive multi-media technical resources to help you
- We investigate all quality concerns to ensure our products perform to the highest standards

If the product does not perform as described on this datasheet, we will offer a refund or replacement. For full details of the Abpromise, please visit <https://www.abcam.com/abpromise> or contact our technical team.

## **Terms and conditions**

---

- Guarantee only valid for products bought direct from Abcam or one of our authorized distributors